



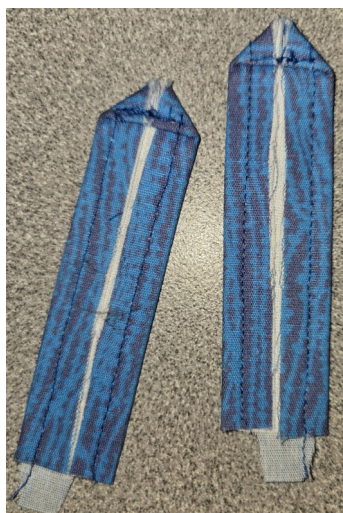
StudioKat Designs, Inc.

Phone: 336/416-1799

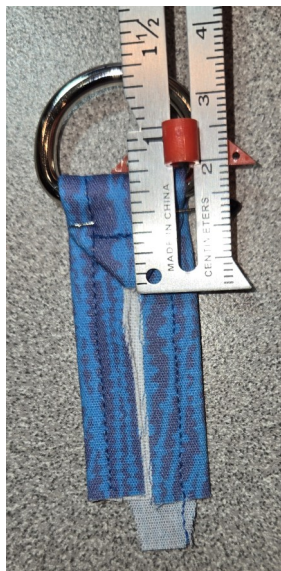
Email: info@studiokatdesigns.com

the Expand-o-matic

Steps 24a-27: Creating & Attaching your Ring Tabs



24a) (at left) Press BOTH unnotched Ring Tab ends over diagonally to WS of each Tab (so they meet along center seam). Baste close to bottom edge to secure this placement.



24b) (at right) Push this end thru a 3/4" wide D-ring until ~3/4" of this end is visible on WS of Ring Tab. Pin in place.



24c) (above) Using a zipperfoot, stitch across Ring Tab as close as possible to enclosed D-ring thru all layers.



25) (at left) When the bottom Double notches are aligned, the Ring Tab should NOT be centered. Make 2 Topper units that are mirror images of each other (above).



26a) (above) The wider side of the Topper should be placed over the Expander zipper when double notches are aligned.



26b) (at left) Carefully stitch Topper in place 3/8" from edges (watch out for that pesky zipper box again)



27a) (at left) Here's how your Topper should be configured after stitching.

Press ALL seams UP & away from Expander.



27b) (above) Here's how the underside of the Topper should look when complete.