

Instructions for a Segmented Pouch Variation for our Cignet Phone Pal

July 2025



This sample was created using all-cotton fabrics



This sample was created using a combination of cork & cotton fabrics

Please take note: if you will be using cork

1. the sample above was accomplished using **NONE** of the interfacing indicated in the supply list on the pattern cover. We **DID** use foam stabilizer however in all of the called-for areas without a problem.
2. We did **NOT** use cork in the strap at all. In my experience it makes the slide difficult to adjust.
3. As is the case anytime you use cork, try to keep the use of pins confined to the seam allowance areas. (*This isn't always possible.*)

Deviations from pattern instructions when using cork

The **Cignet Phone Pal** worked up beautifully in cork, but please observe the following deviations from our pattern instructions when using it w/cork. **DO** follow the pattern instructions as written except for the following important changes (**which are emphasized in bold print**).

- Step 1c: Replace & secure paper pattern templates back onto Closure (#6) & **ONE** Bag (#1) in foam, & also to **WS** of Phone Pouch & Back Pocket in lining, aligning ALL outside edges.
- Step 1d: Mark along the inside edges of all four mag snap cutout circles to transfer mag snap placement directly onto each item. (*Please note—I used a pencil to mark the magnet placements to **WS** of lining so the marks wouldn't "bleed thru" to **RS** of lining.*)
- Step 2a: Separate 1st matched magnet pair. Place one side of magnet pair MSU within the outlined areas of Closure in foam & **WS** of Phone Pouch in lining. Secure in place w/pins then stitch close to outside plastic edges of magnet. Reinforce stitching which **WILL show on the INSIDE of Pouch**, & set it aside for step 10.
- Step 2b: Place Phone Pouch in lining **WST w/Phone Pouch** in exterior (sandwiching magnet in between layers). Stitch close to all side edges of Pouch edges to secure placement then set Phone Pouch aside for step 18.
- Step 2c: Separate 2nd matched magnet pair. Place one side of magnet pair MSU within outlined area of Bag in foam & **MSD on WS of Back Pocket** in lining. Secure w/pins then stitch close to outside plastic edges of magnet. Reinforce stitching which **WILL show on the INSIDE of the Back Pocket**. Set Bag in foam aside for step 4. Set Back Pocket in lining aside for step 5
- Steps 2d + 3a-c: Skip these steps & go straight to step 4,
- OR.... If you'd like to make a segmented Pouch, proceed to column 2.

Pattern Template Remarks

- A. We suggest you transfer these templates (*and their markings*) over to tracing paper. You will need to **SEE** the design of your fabric, (under the paper), as you pin your templates in place.
- B. Each of these templates are **LONGER** than they actually need to be. This isn't a problem, & may come in handy later on.
- C. Concerning the template markings...
BOLD lines = your cutting lines
Thin Solid lines = the approximate cutting line for the Pouch.
Dashed lines = seam allowance
Dotted lines = the approximate center of each template.
- D. These templates have been created for the **Cignet Phone Pal** pattern, but **could** work (w/perhaps some modification), for other projects.

Now Let's Start



1— Carefully align your template WSD over the design element in your fabric that you wish to replicate. I often trace important design elements onto the template (*see at left, where I aligned the yellow stripe with the line I made on the template.*) Pin in place to secure.

2- Repeat this procedure w/piece #'s 3,5, &7. As much as possible, the design element on each template should be placed exactly as it was in template #1. (*I used a solid fabric for piece #'s 2,4,6, &8.*) That was easy!

3- Set templates #5-8 aside (*for step 6*). Place templates #2 & #3 RST aligning edges & double notches. Stitch 1/4" from edges. Press seam open.

4- Align single notch on template #1 RST w/single notch on template #2. Stitch 1/4" from these edges then press seam open.

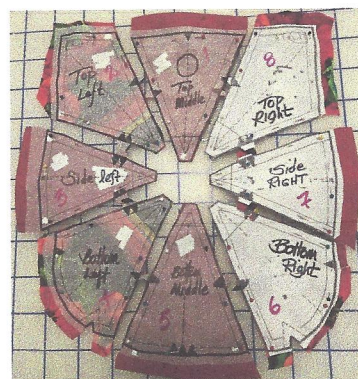
5— Align double notch on template #4 RST w/ double notch on template #3. Stitch 1/4" from edges, then press seam open. This is the left side of your Pouch Pocket. Set is aside for step 10.

6— Sew up the right side of your Pouch Pocket in the same order as was done in steps 3-5. First, align & stitch template #6 & #7 together. Then add template #5 to #6, then template #8 to #7. Don't forget to press after each add. This will be the right side of your Pouch Pocket.

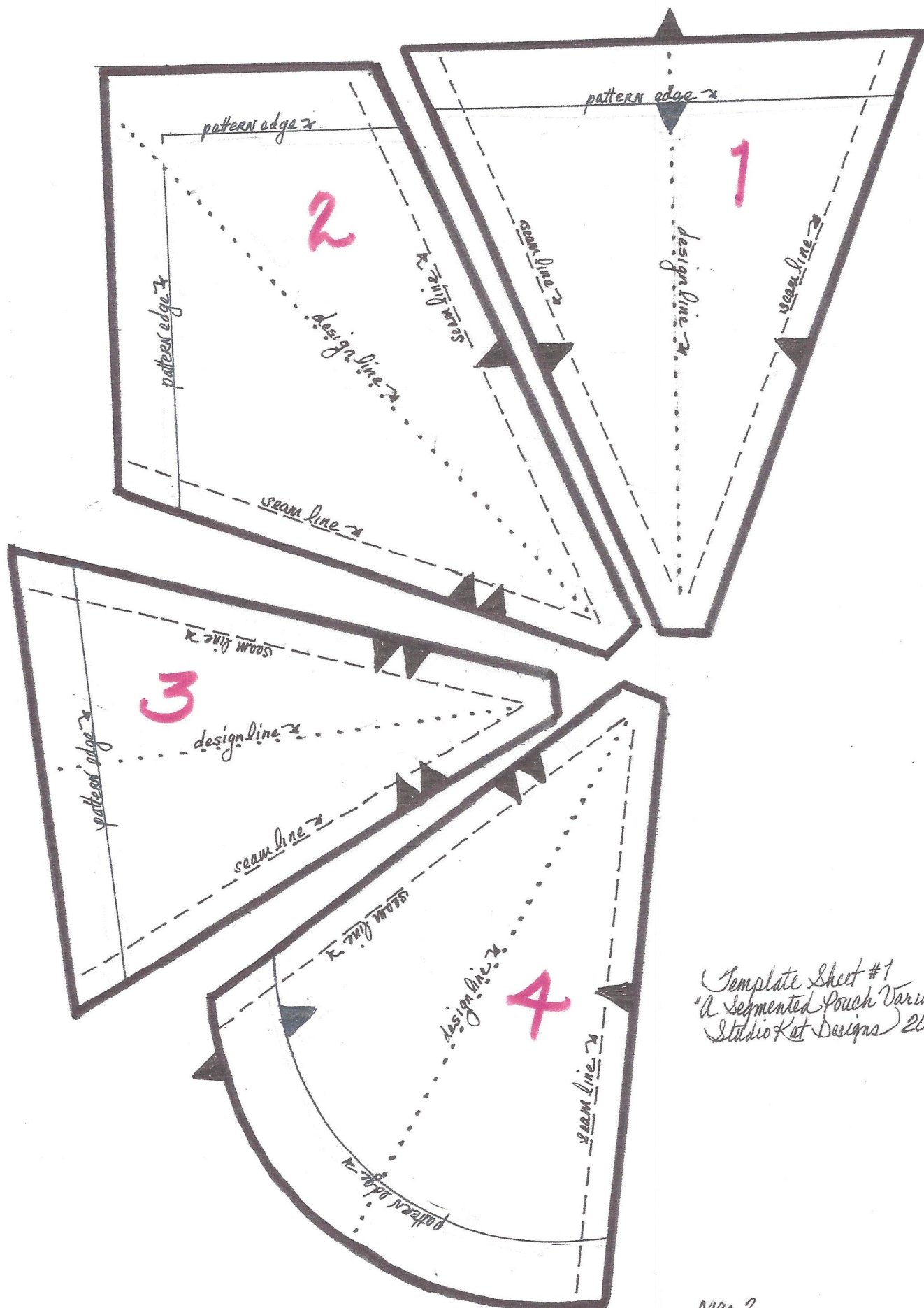
10- Align this unit with the long, raw edges of the left side unit (*created in step 5*), aligning single notches. Stitch 1/4" from edges. Press this long seam open. The Pouch center might be a tad bulky, depending on the fabric you've used. You can "oh-so-carefully" trim a bit of this bulk away in order to get Pouch to lay flatter.

11- Retrieve pattern piece (#3) (*from Cignet Phone Pal pattern pack*). Place it WSD on RS of the segmented unit you created in step 10. This pattern piece is a bit smaller than our created unit. That's why we've included notches & dart lines on the outside edges of your segmented unit. They can be used to guide pattern piece (#3) into place, so that the center of your segments will be in the center of your Phone Pouch.

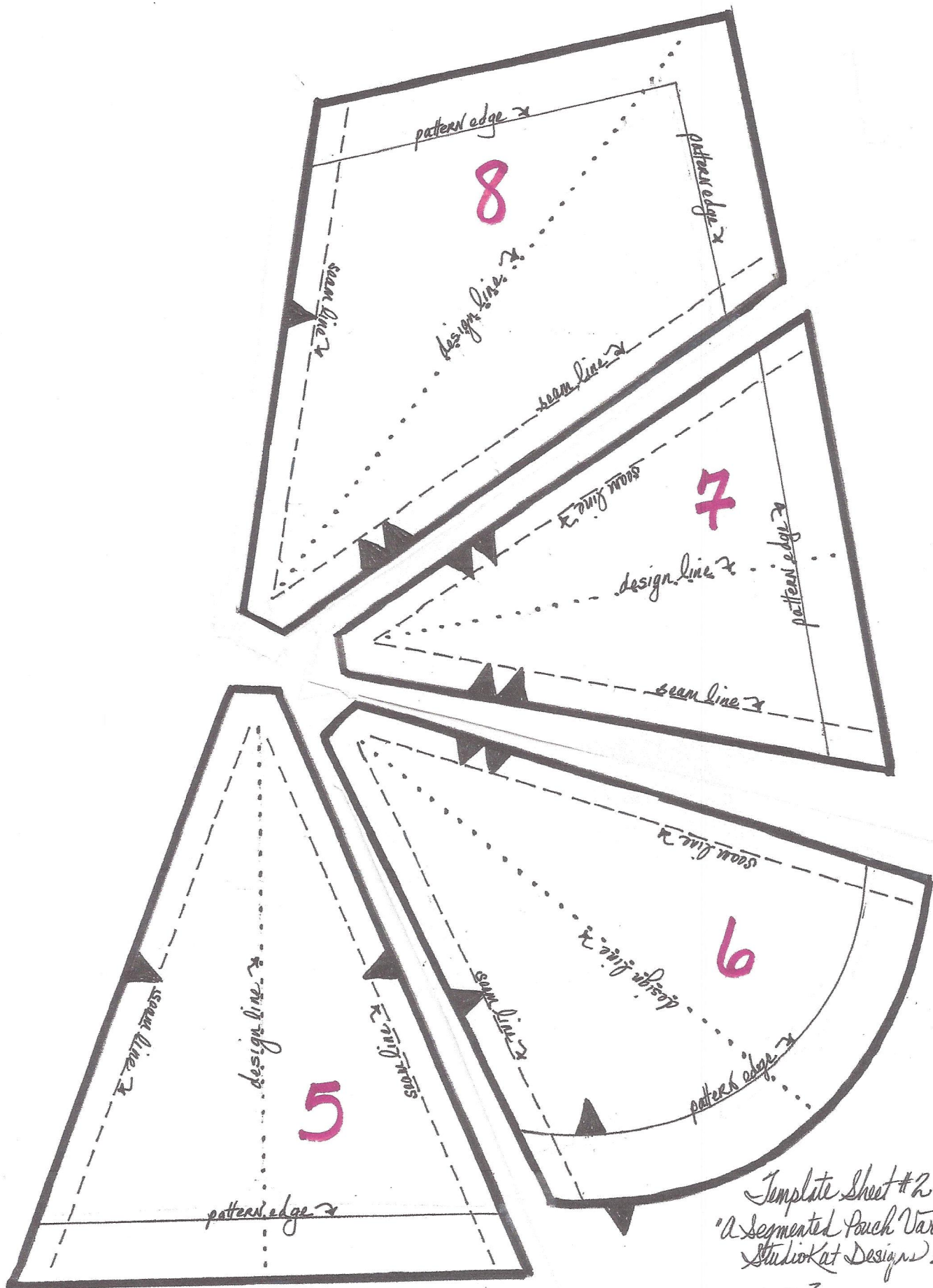
12- Pin pattern piece #3 in place very carefully, using more pins than you'd normally use, in order to keep your segmented unit from shifting while your cutting along the outside edges. Once your cutting is complete, Please return to the **Cignet Phone Pal** instructions (*at step 4*) to resume the making your new bag!



We would absolutely LOVE it if you emailed a picture of your completed bag to us at info@studiokatdesigns.com



Template Sheet #1
 "A Segmented Pouch Variation"
 Studio Kat Designs 2025



Template Sheet #2
"A Segmented Pouch Variation"
StudioKat Designs 2025
page 3