

the Carolinian

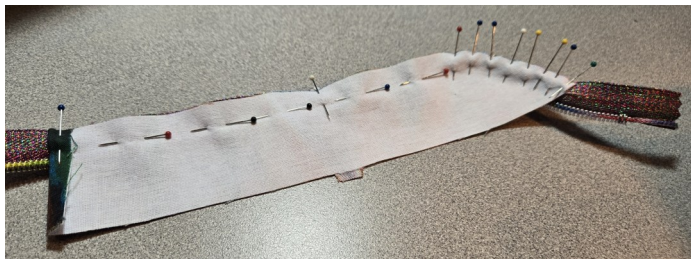
Steps 31-34+37

Creating & Attaching the Zip Panels

StudioKat Designs, Inc.

Phone: 336/416-1799

Email: info@studiokatdesigns.com



31) Open zipper completely & place it RST on long curved Zip Panel in exterior edge, centering mark over single notch. Pin in place easing zipper edges thru curved area of Zip Panel then stitch in place a scant 1/4" from edges.

It's fairly easy to ease the zip Panel edges in place by taking your times and placing your pins VERY close together as seen at left



Here's how the Zip Panel should look now. (Notice how the curved area of the Panel bows up a bit.)



32a) Place Zip Panel in lining RSD on **WS of zipper** (*RST w/Zip Panel in exterior*), aligning single notch over zipper mark, **AND** aligning straight end edges of Zip Panel. Stitch in place a FULL 1/4" from edges then flip Panels WST.



32b) **DO** clip into fabric edges, but **NOT the zipper edges**. Press well. (*curved area of Zip Panel will be bowed UP & that's OK.*)

Please notice that I have generously clipped into the curved area of **BOTH** the exterior fabric & the lining, but **NOT** the zipper.



33) Repeat steps 33-34 to place 2nd set of Zip Panels on the remaining free zipper edge. (at left)

Stitch in place a FULL 1/4" from edges. **DO** clip into fabric edges, but **NOT the zipper edges**. Press Zip Panels away from zipper

34) Here's how the finished Zip Panel should look. Topstitch close to finished seam & end edges, then baste raw outside edges together to secure them.

Notice how the curved area of Zip Panel bows upward. This is OK and is desired.



go to page 2

the Carolinian

StudioKat Designs, Inc.

Steps 31-34+37 (continued)

Phone: 336/416-1799

Email: info@studiokatdesigns.com

Creating & Attaching the Zip Panels

The purpose of the following pictures is to aid in attaching the Zip Panels WITHOUT ending up with twisted zipper ends



First– Place Zip Panel into Bag as shown above.
(Notice that the zipper ends proceed RSU out of Bag)



Next, open the zipper



Now, keeping this configuration, flip one Zip Panel UP, so its RST with Facing, aligning single notches. Pin in place at single notch only for now.



In the same was, flip the opposite Zip Panel UP and RST with that Facing, aligning single notches. Now go ahead and open zipper completely and pin both Facings in place



It should look like this when completely attached. Now pull the Facings (with the attached Zip Panels OUT OF BAG for stitching). Then clip off top zipper ends.



And here's how the Bag Top area should look after stitching and with the Zip Panels pushed down and INTO Bag as they will eventually be when the Bag is complete.