

the High Seas Convertible

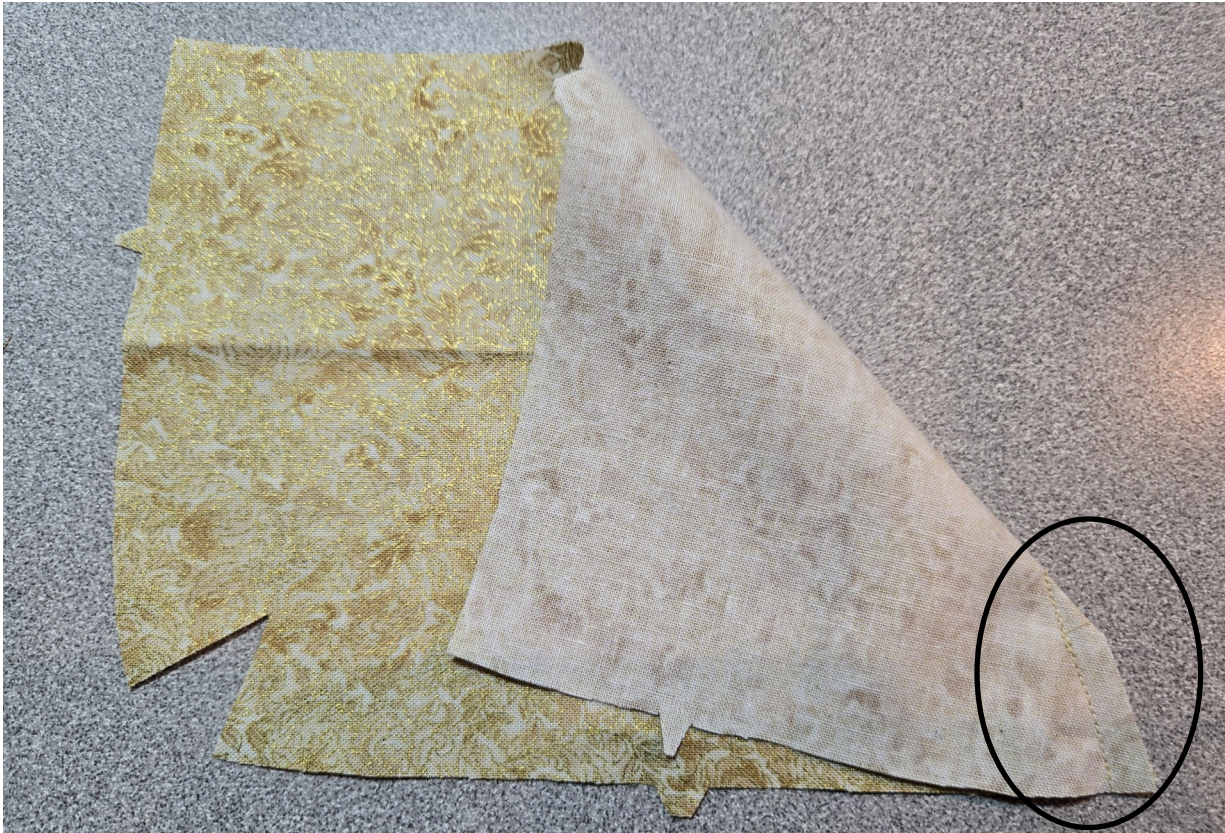
Steps 8a-8e (page 1)

Stitching Bottom Cutout Corners

StudioKat Designs, Inc.

Phone: 866/409-8634

Email: info@studiokatdesigns.com



8a.1) Align cut corner edges RST on BOTH bottom sides. Stitch 1/4" from edges.



8a.2) Clip both corner seams open close (but not over) inner point of seam.

8a.3) Press both seams OPEN.

