

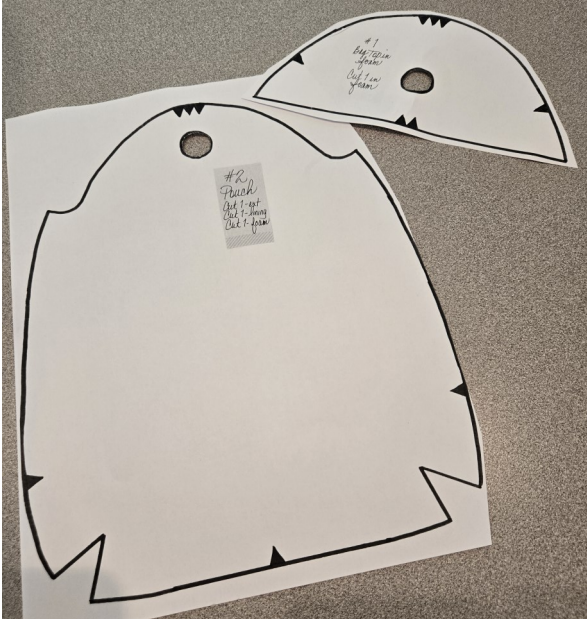


# Stitching Invisible Sew-in Magnets in place (Page 1)

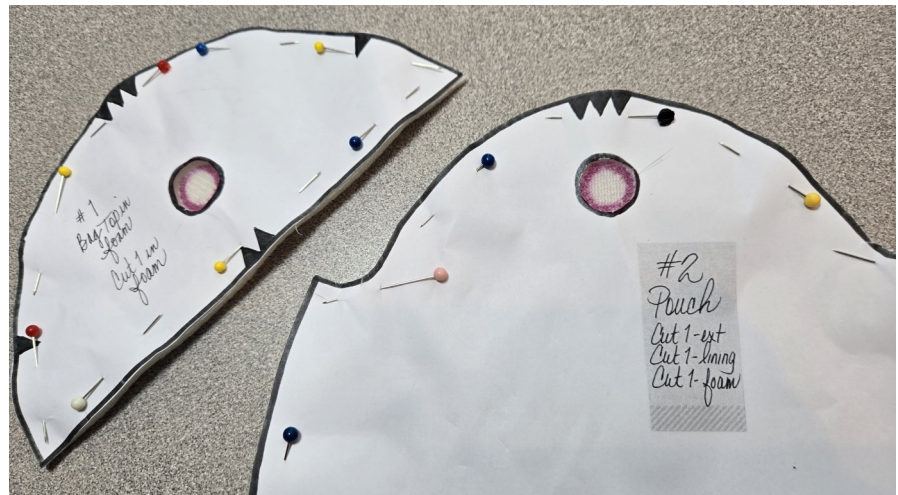
StudioKat Designs, Inc.

Phone: 866/409-8634

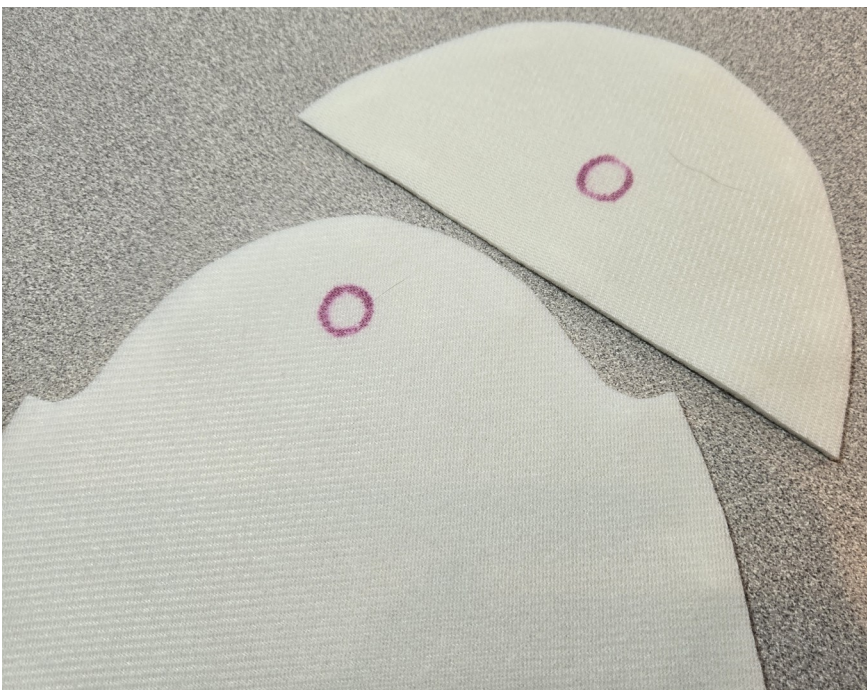
Email: [info@studiokatdesigns.com](mailto:info@studiokatdesigns.com)



4a) Carefully cut out the area **WITHIN** the mag snap circle that's printed on your paper pattern pieces:



4b) Now replace each pattern piece onto it's respective foam cutout, aligning outside edges & re-securing it with pins. Mark along the inside edges of both mag snap cutout circles to transfer this placement directly to each piece of foam.



4c) Your foam pieces should look like this when you're done.



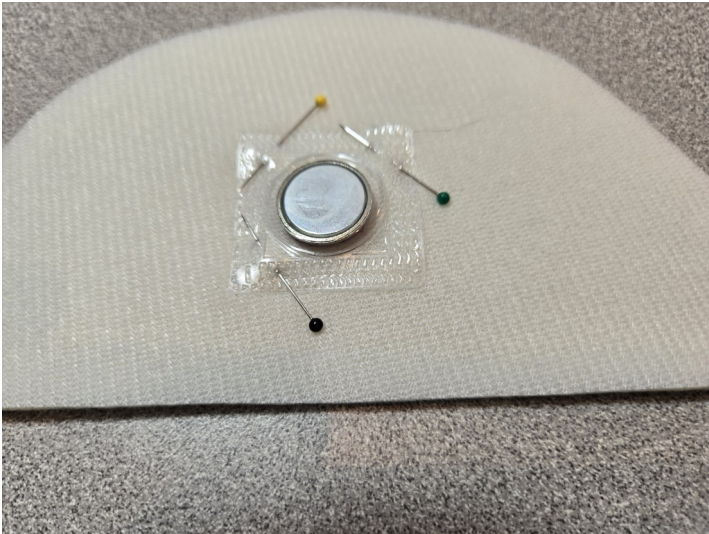


# Stitching Invisible Sew-in Magnets in place (Page 2)

StudioKat Designs, Inc.

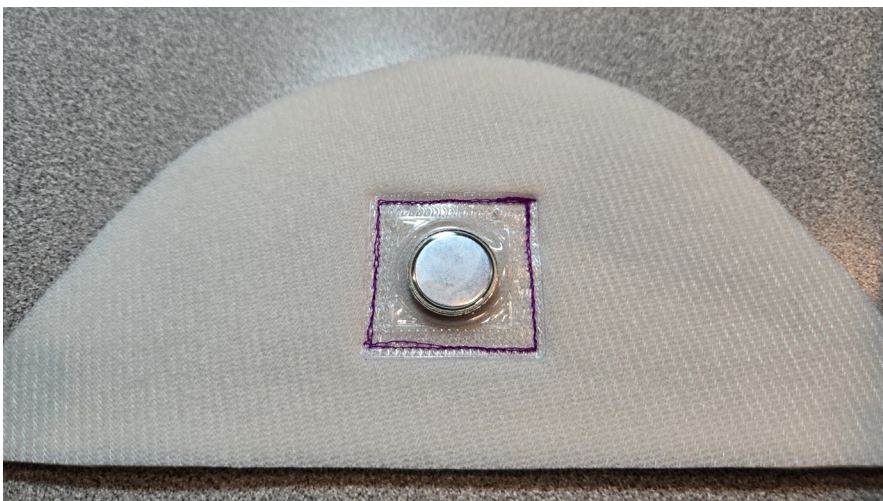
Phone: 866/409-8634

Email: [info@studiokatdesigns.com](mailto:info@studiokatdesigns.com)



5a) Separate magnet pieces. Place one side **magnetic-side UP** on each of the respective pieces of foam completely covering the outlined area. Secure this placement with pins.

5b) Stitch close to all 4 plastic edges of each magnet. Reinforce stitching.



5c) Your foam pieces should look like this when you're done.