



the Double Take

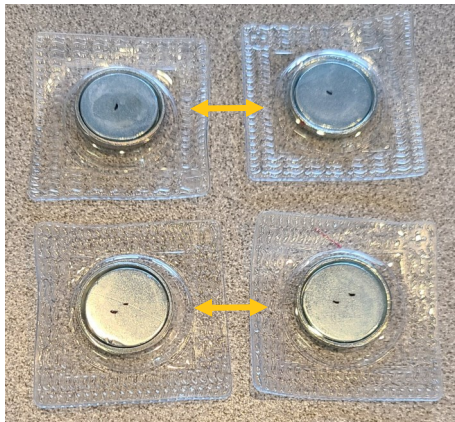
Steps 1-5- Preliminaries

including Magnet & foam placements

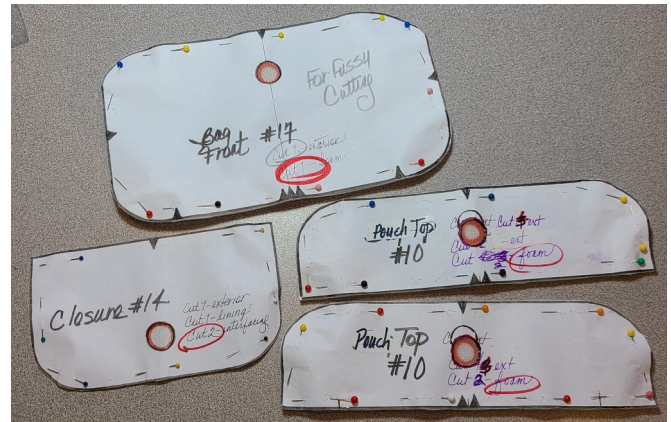
StudioKat Designs, Inc.

Phone: 866/409-8634

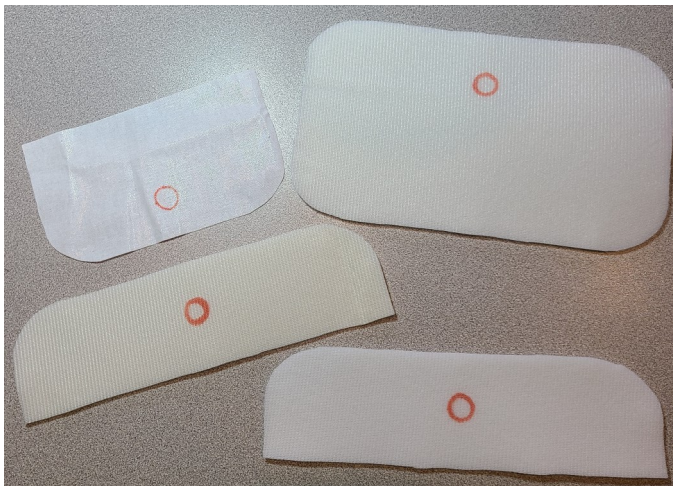
Email: info@studiokatdesigns.com



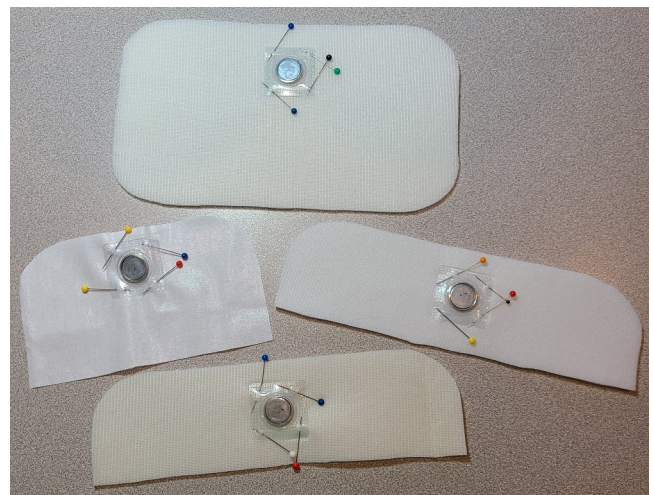
Step 1a: Here's my two sets of matched magnets. Set one is marked w/1 dot each & set two w/2 dots each. Mark them lightly, you don't want to be able to see these marks thru your lining.



Steps 1b-d: Here I've cut out the interior space within the magnet markings, replace the templates on my foam & interfacing pieces and marked long the inside edges.



Here's how the foam & interfacing pieces look with the templates removed. It doesn't matter how dark you make these markings as the magnets will cover the marks.



Steps 2a, 3a, & 4a: Here's my magnets pinned in place and ready to stitch. Don't forget to stitch close to side edges of magnets & to reinforce this stitching



Steps 2b+c, 3b-d, & 4b-d: Here's how your pieces look RSU when completed & with labels in place.



Steps 2b+c, 3b-d, 4b-d, & 5a: Here's how your pieces look RSD when completed & with labels in place.