



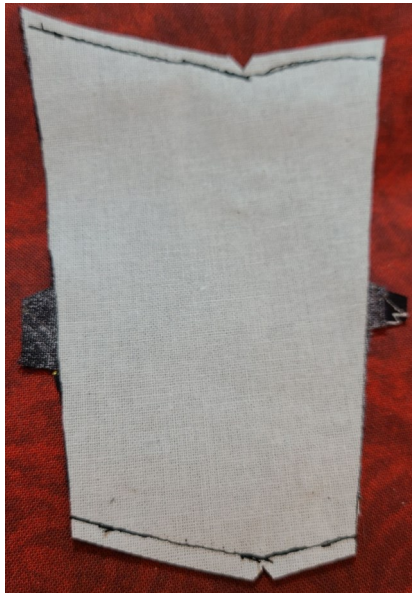
# the Katalina

StudioKat Designs, Inc.

Phone: 866/409-8634

Email: info@studiokatdesigns.com

## Steps 14-16- creating & placing Welts



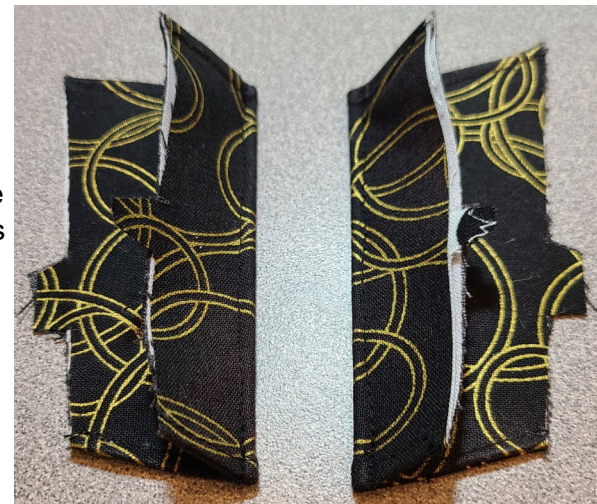
**Step 14:** This step is pretty easy but I included it so I could show you how I make a little notch at each “V” in the seams. This makes for a smoother & flatter seam after you’ve turned it RSO and given each a good pressing.

*(Just make sure you’ve reinforced your stitching PRIOR to cutting your “V” notch!)*



**Step 15:** Fold both Welts along the dashed foldline indicated on the Welt pattern piece, aligning top & bottom edges. **BUT...** be sure to fold them so that they are “Mirror-Images” of each other (as seen in these photos) *(the side raw edges should be ~3/4” apart at the top of each Welt & ~1/2” from each other at the bottom edge.)*

Now stitch close to each folded edge.



**Step 16:** While maintaining Welts as “mirror-images”, place one along each Caddy side edge (from step 13), aligning triple notches with those along side edge of Caddy Facing (with stitched fold lines “pointing inward toward center of Caddy.”)

Using a zipperfoot, stitch both in place a scant 1/4” from edges.