

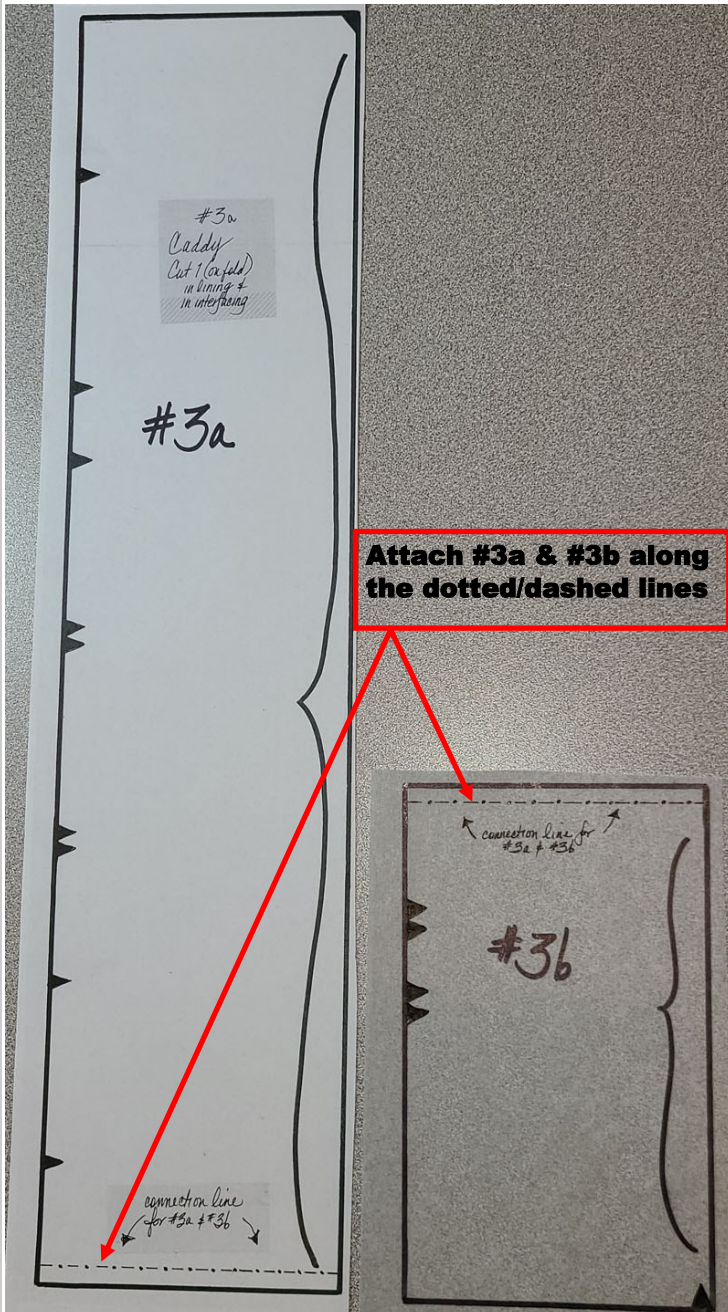


the Katalina

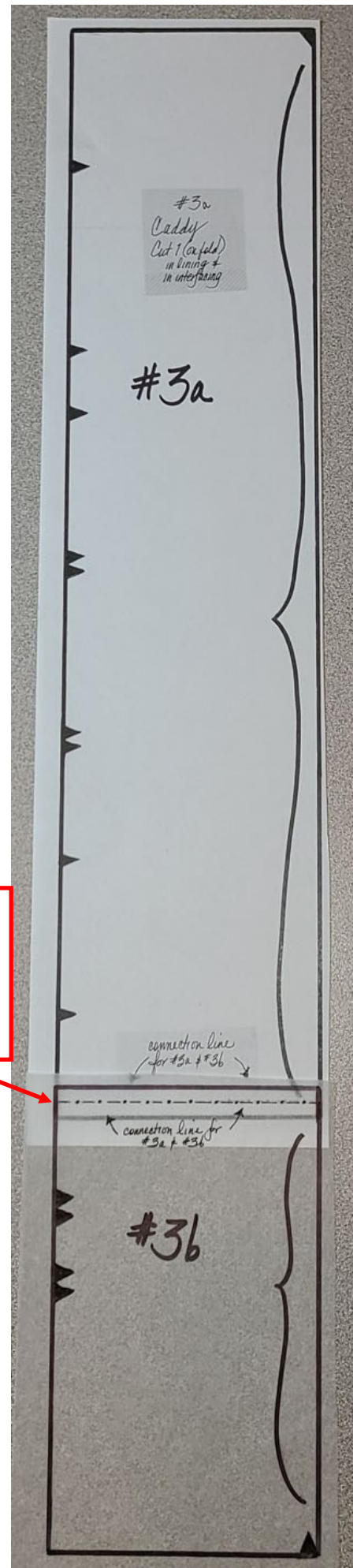
Step A1 – Creating the pattern piece for Caddy Template (#3a + #3b)

Combining your pattern pieces is really easy. The pictures below will show you that all you need do is connect these two pattern pieces (#3a+#3b) along the designated dotted/dashed line to produce the pattern template you'll need.

Please remember that the easiest way to accomplish this is to use tracing paper for at least one of the two pieces in your pattern package.



Here's how you Caddy template looks when connected.



StudioKat Designs, Inc.

Phone: 866/409-8634
Email: info@studiokatdesigns.com