

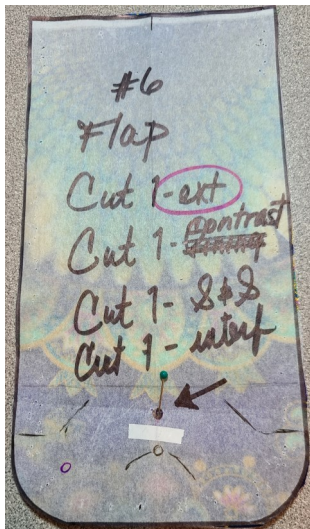


the Bella BiFold

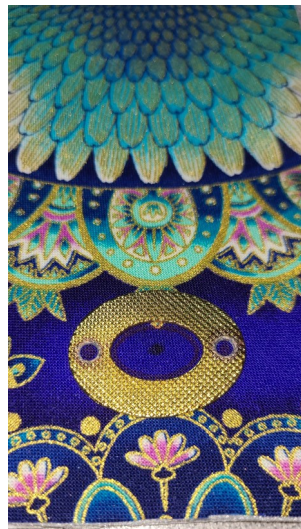
StudioKat Designs, Inc.

Steps B1-B7 –
Placing Your Magnet Pairs

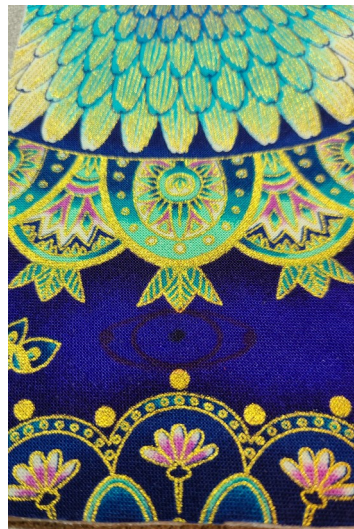
Phone: 866/409-8634
Email: info@studiokatdesigns.com



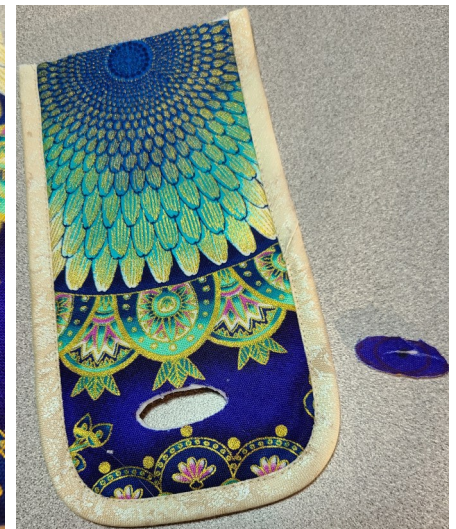
8- Mark the placement of your Twist Lock by transferring the “dot” on your Flap(#6) template to Flap exterior AND contrast with a pen.



12a+b- Center female side of Twist Lock over the dot. Trace around then opening and ALSO around the screw hole openings directly onto your fabric with a pen.



12c- Expand this circular/ oval area all the way out & slightly beyond the twist lock AND screw hole openings.



13- After glue is dry carefully cut into outlined area, then carefully start trimming that oval area away just to the OUTSIDE of the lines you drew. *Notice how you can actually SEE the drawn lines on that little blue circular cutout?*



14a- Place both the front & back of Twist Lock on Flap to see if there's any fabric or fleece visible in the center area. As you can see here, there's a bit of both in the center area & also the right screw area. (see red arrows)



14b- Also test the screws to see if there's any of either interfering with their functioning. If so, remove hardware in those areas. Repeat (bit by bit) until screws can be tightened firmly.



14c- Also please note that anytime the front area of the twist lock is face down, you need to place it on a soft surface so that you don't incur permanent scratches.