



the Bella BiFold

StudioKat Designs, Inc.

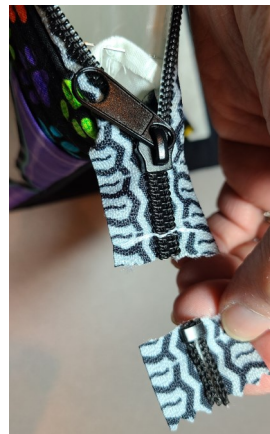
Phone: 866/409-8634
Email: info@studiokatdesigns.com

Steps 54a-56 –
Finishing the Bottom Zipper Area, pg 1

First of all I apologize for using several bag samples in order to get the pictures we needed for this tutorial. It was necessary in order to get interior or exterior colors you could effectively “see”.



54a- Move zipper pull away from bottom zipper box then stitch across zipper ~1/4” above zipper box. Reinforce this stitching several times



Cut zipper bottom away just above the zipper box.



54b– to help out in upcoming steps turn under the top raw edge of Pouch exterior (WST) at open zipper bottom area ~1/4” (*at left*).

Secure in place w/a few stitches. (*Make the stitches that will show on the outside of the bag very small.*)



55– Push zipper end DOWN & in between Bag lining & exterior. Ease zipper pull UP to just above opening in lining (*at left*) while pushing lining OUT into the corner area to just below bottom edge of zipper pull (*at right*)





the Bella BiFold

StudioKat Designs, Inc.

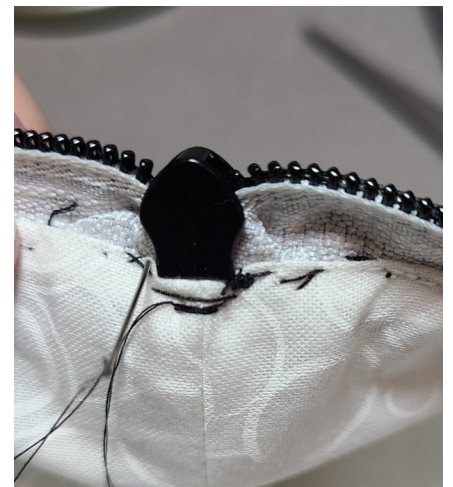
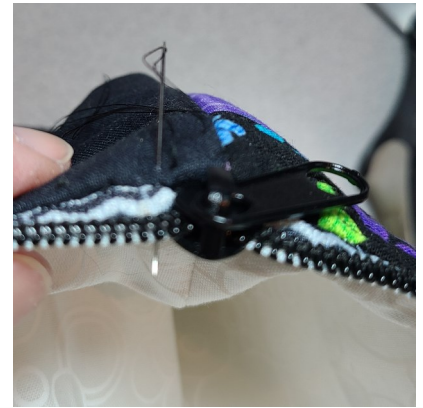
Phone: 866/409-8634

Email: info@studiokatdesigns.com

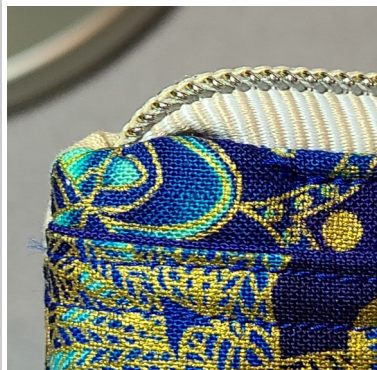
Steps 54a-56 –
Finishing the Bottom Zipper Area, pg 2



55– Push cut zipper end **DOWN** & in between lining & exterior. Ease zipper pull **UP** to just above opening in lining while pushing lining **OUT** & into corner area to just below bottom edge of zip. Secure this area by stitching close to the top edge of lining from inside the Pouch to exterior of Pouch. *Make sure you catch both the lining AND the pouch exterior edges in this stitching.*



56– Maintaining this positioning, take a few hand stitches on LS of Bag corner going over AND behind zipper teeth thru lining & zipper tape only. These stitches need to be as close as possible to bottom edge of zipper pull. Your needle should enter thru the lining on one side of zipper teeth then exit to lining from behind the zipper teeth on the opposite side. Do this 3-4 times then open & close zipper to make sure zipper is always kept above this stitching even during usage.



Here's some close ups of this finished area for your reference.

