



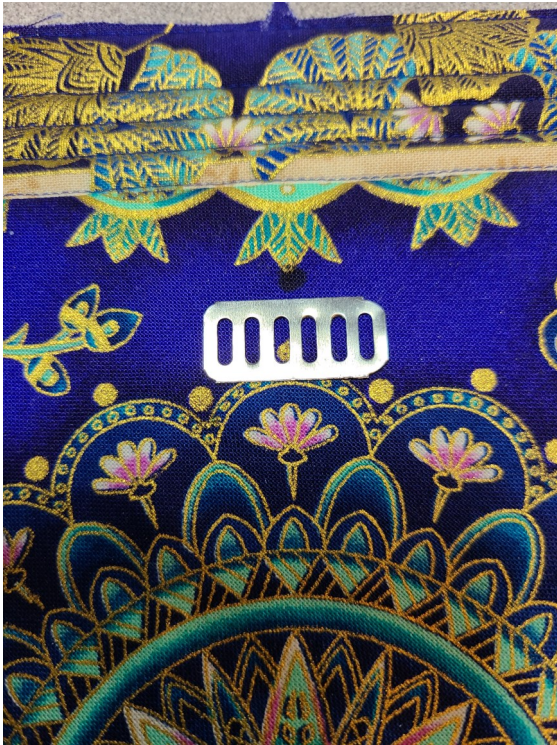
the Bella BiFold

StudioKat Designs, Inc.

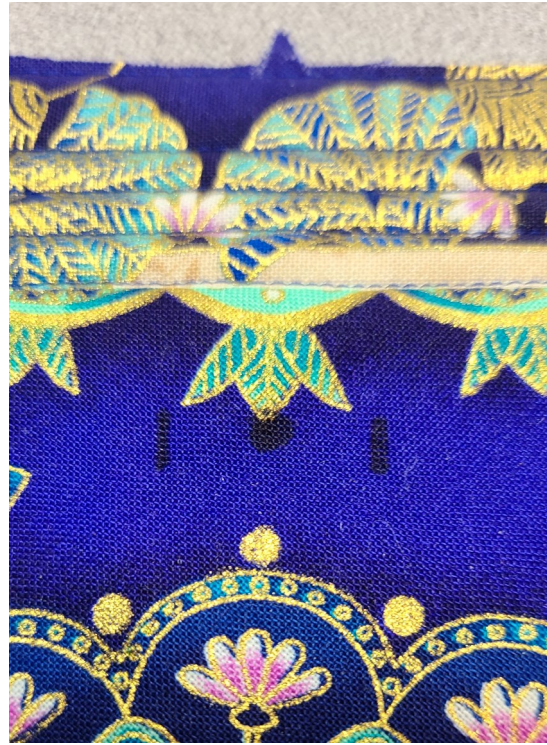
Steps 21-22 –
Placing Your Twist Lock (part 2)

Phone: 866/409-8634
Email: info@studiokatdesigns.com

Inserting the male portion of your Twist Lock is VERY similar to inserting the old-fashioned magnetic snaps.



21– Center the slotted Twist Lock Back over the dot you made on your Bag Front in step 5. Keep in mind that the center of your slotted back may in fact be a "bar" (*as is the case here*) as opposed to an actual slot opening.



22– Once centered, mark the **OUTERMOST** slot opening as these are the openings you'll use to push the prongs of your twist lock thru. Now you cut thru these slot marks to the fleece side of the Bag Front. (*Again, less is more here, do not overcut*)



Once accomplished you can push the prongs of your Twist lock thru these opening to the foam side of Bag Front. Apply the slotted back to secure this positioning and bend the prongs outward over the Bag Front foam.

I also cut a small piece of interfacing and fuse it over the slotted back just to prevent unnecessary wear & tear on the inside of your bag by these metal prongs.