

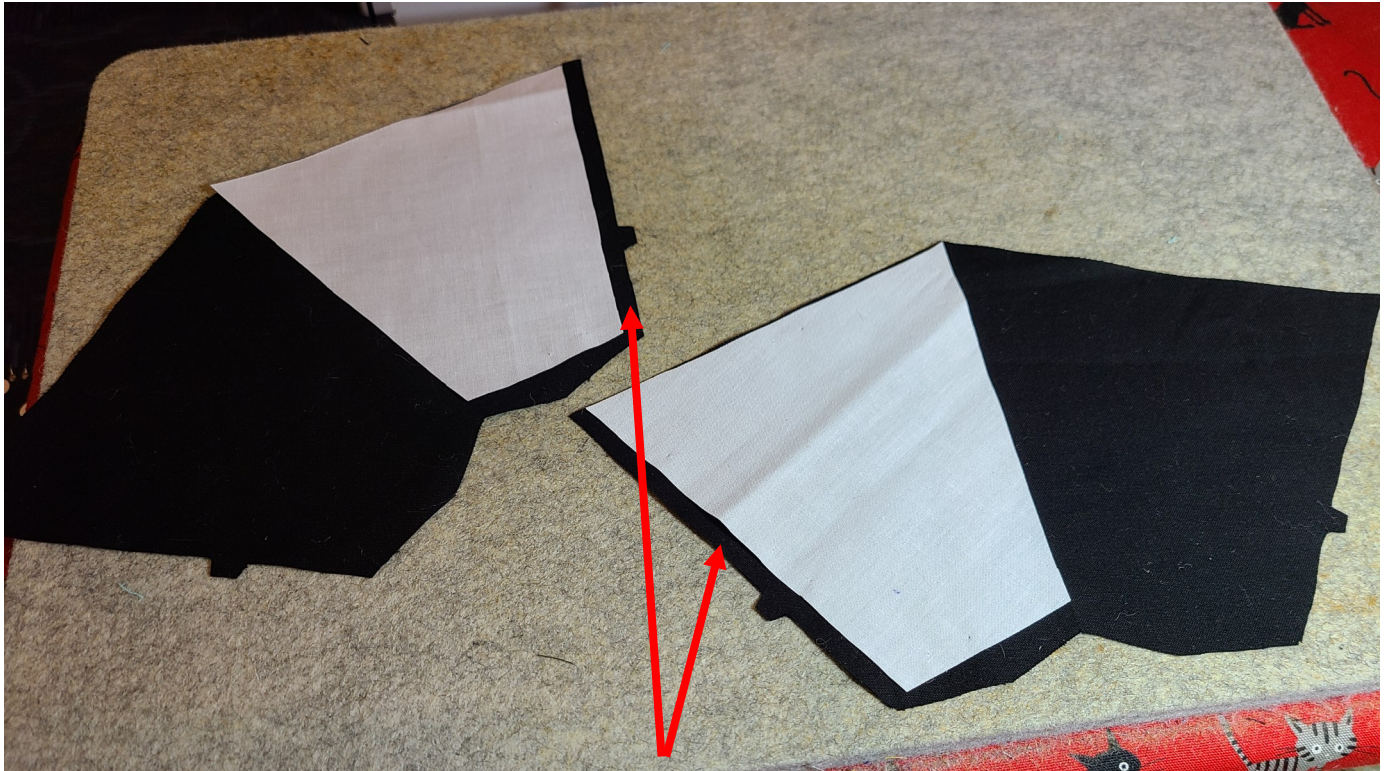


the Bella BiFold

StudioKat Designs, Inc.

Steps C3 –
Placing Your Welt Interfacing

Phone: 866/409-8634
Email: info@studiokatdesigns.com



C3: Place Welt(#21) in interfacing WSD on each Welt#14)in contrast leaving at least 1/4" un-interfaced (see arrows above) along double notched edge. Fuse in place & set aside for step 32.