



Making the MOST of a Very LARGE Print

An embellishment technique demonstrated on our "Quattro" pattern



Supplies- You will need to have the following items before you begin.

- Tracing Paper (preferably 11" X 17" in size)
- A very LARGE print. I used a custom tie-dyed print which I got from Vicki Welsh at this Etsy site.
<http://www.etsy.com/shop/vickiwelsh> It was a dream to work with.

Instructions-

1. Make a tracing paper copy of each of the following pattern pieces.

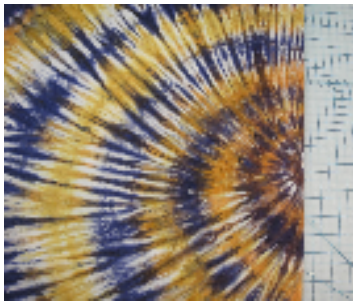
- Shell A #1 (Cut 4) ***see note below**
- Upper Back #5 (cut 1)
- Lower Back #6 (cut 1)
- Pouch #7 (cut 1)
- Strap Facing #10 (cut 2)
- Zipper Panel #12 (cut 2)

*** NOTE: Cutting out Shell A's** — To keep the tie-dye design flowing 'out to the side' on the Bag Back AND Front, add 1/4" to the pattern edge that is normally placed on the fold of your fabric. When you cut this out, you'll cut around ALL FOUR edges. DO NOT place it on the fold. (See step 6.)

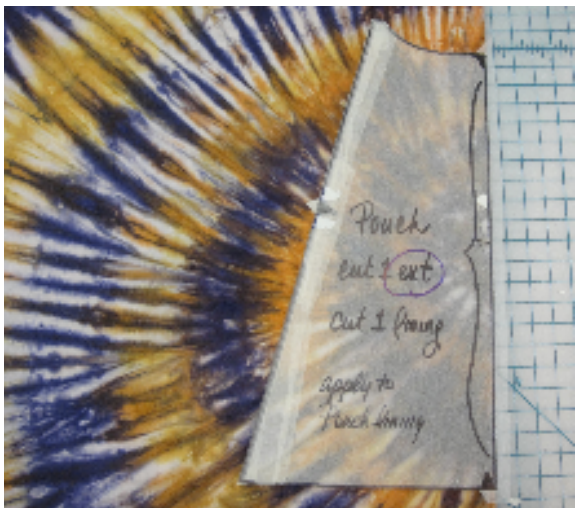
2. To begin, determine the optical center of BOTH pieces of fabric. (The optical center of your Pouch & Lower Back pattern pieces is already marked for you on your original. Transfer that mark to your trace paper copy.)



3. Fold each piece of fabric along your optical center. Press a nice crease in each fold.



4. Align your Pouch (#7) on the fabric fold, placing the Pouch's optical center mark on the optical center of your fabric. Pin it in place, but **DO NOT** cut it out yet.



5. Grab your 2nd piece of fabric. Align it, folded edges together with your first piece of fabric. Keep in mind, that it's MORE important for the gold & purple 'rings' to look lined up, than it is the optical centers, since they will be on opposite sides of the bag. They **DO NOT** have to be perfect.



6. Place Lower Back (#6) right side DOWN on fold of 2nd fabric, aligning bottom & top edges with Pouch. Pin in place. Place a Shell A (#1) along outside edge of Pouch & Lower Back (as shown below). Place each edge as close as you feel comfortable cutting it. The closer you place it, the better the fabric design will match. (You can always mark notches with chalk.)

Note #1— Place Upper Back (#5) pattern piece along fold, as close as possible, just above Lower Back. (It's not pictured here)

Note #2—Your fabric is folded, so the two Shell A's that get cut from the fabric on the left, match up to your **Pouch** or the **FRONT** side of bag. Likewise, the Shell A's that get cut from the fabric on the right, match up to your **Lower & Upper Back** or the **BACK** side of bag.



**Please note the additional 1/4" that has been added to the inside edge of each Shell A, and that it will NOT be cut out on the fold.*

7. Here's a closeup of the Shell A's. You can see where I added an additional 1/4" along the 'Place on Fold' edge. You can also see how these two pieces will look pretty good when they are joined together at that seam.



8. And below, you can see the cutout pieces for the FRONT side of bag, laid along side each other. They look GREAT!

But **REMEMBER**, tie dye fabric is like batiks, with no right or wrong side, & the wrong sides may not match well at all, so...

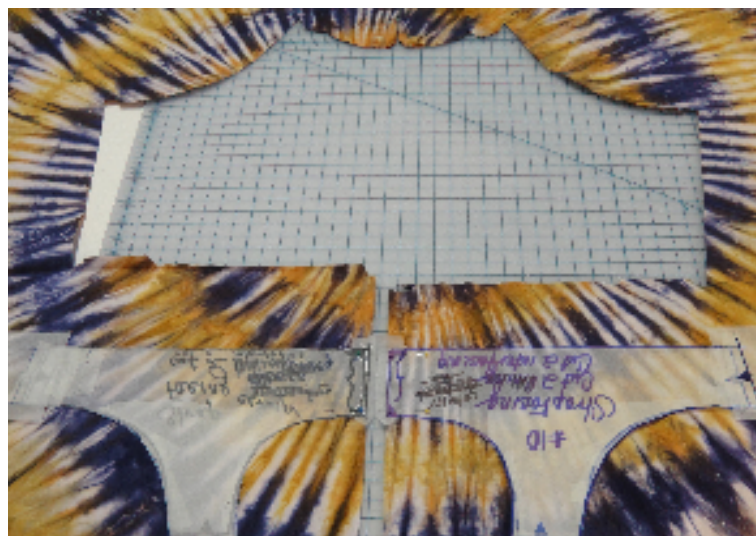
Pin a label to EACH PIECE with the following info for example- RIGHT SIDE of left front Shell A, RIGHT SIDE of right front Shell A, and RIGHT SIDE of POUCH



And below you can see how the bag front (on left) looks along side the bag back (on right).



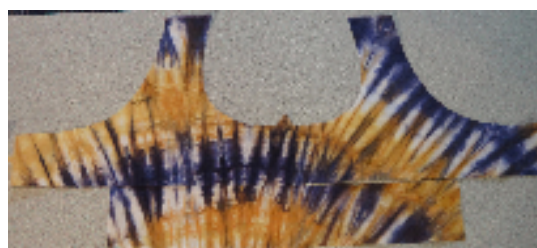
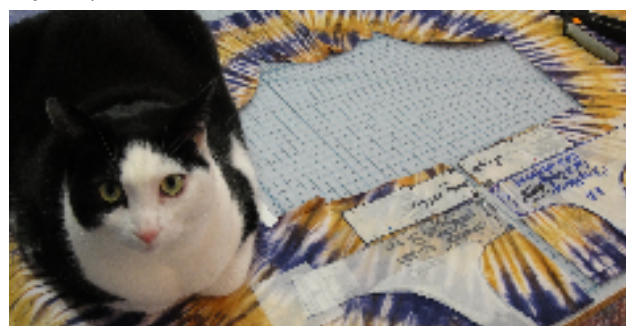
9. Now lets go back to our folded tie-dye fabric, & place the two Strap Facings (#10) on the fold as shown below. **DON'T CUT YET!**



10. The two Zipper Panel (#12) pieces can now be placed as close as possible along bottom edge of Strap Facings, **BUT REMEMBER**, if you want your Zipper Panels to match up to each Strap Facing, then you **must** cut them out on the fold. So, fold each Zipper Panel pattern piece in half **PRIOR** to placing it on the fold below your Strap Facing, as shown below.



10. Of course it always helps to have a good assistant to anchor the fabric for you during this process.



Don't forget to label the right side of each Strap Facing / Zipper Panels pair. They probably won't match interchangeably.

11. Now all you need do, is cut out the following pieces in the leftover tie-dyed fabric (matching is NOT necessary for these pieces).



2 each- Shell A Facing #1 (on fold)
1 each- Base #9 (on fold)
2 each- Liner (#16) (on fold)
1 each- Tab (#17)

OK— that's it. You're ready to start sewing now, but take your time and be sure you use your various pieces according to the way you have them labeled. Enjoy your beautiful bag and the MANY compliments that are sure to come your way!

