

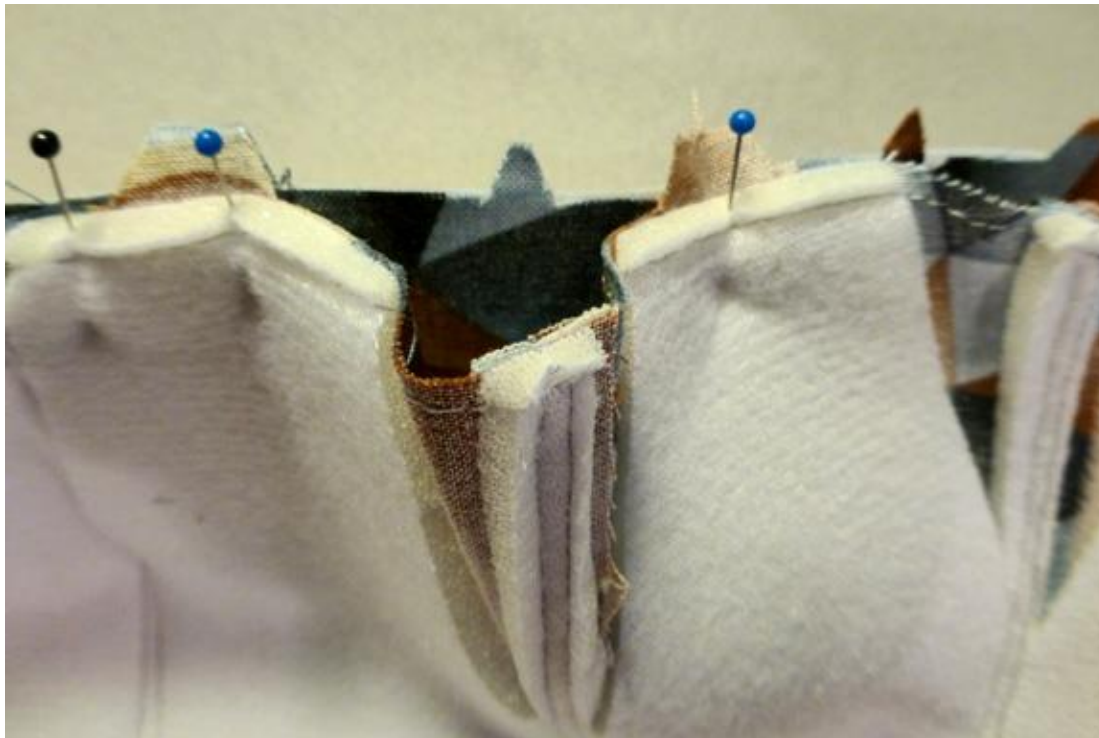
# Uptown Saddlebag

## Attaching Base to Snap Pouch– steps 8-11



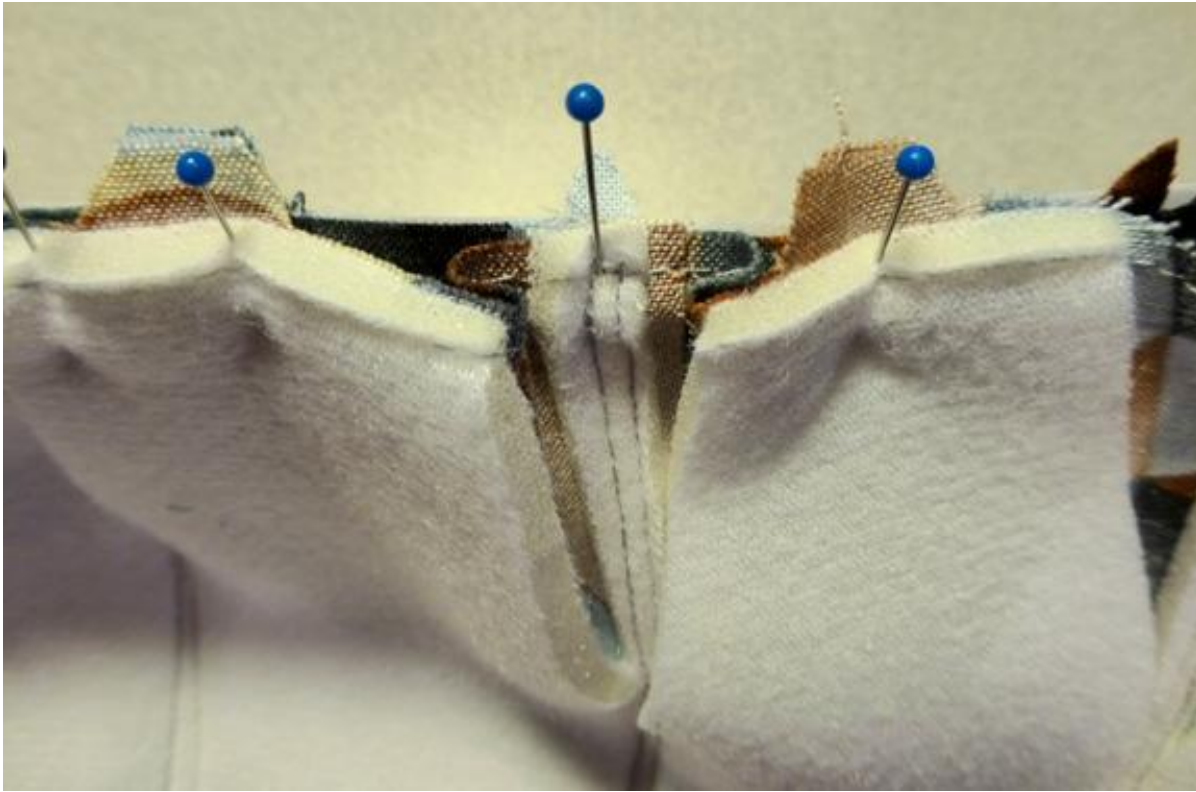
Step 8- Flip Snap Pouch over RSD on flat surface. **CARE-FULLY** cut away a triangle of S&S along bottom edge on either side of all 4 Segment seams. Each triangle cutout should be ~1.5" tall, and ~1/2" wide at base.

\*Don't forget to baste across bottom edge of Snap Pouch to secure those loose S&S edges to the bottom fabric edge of your Snap Pouch.

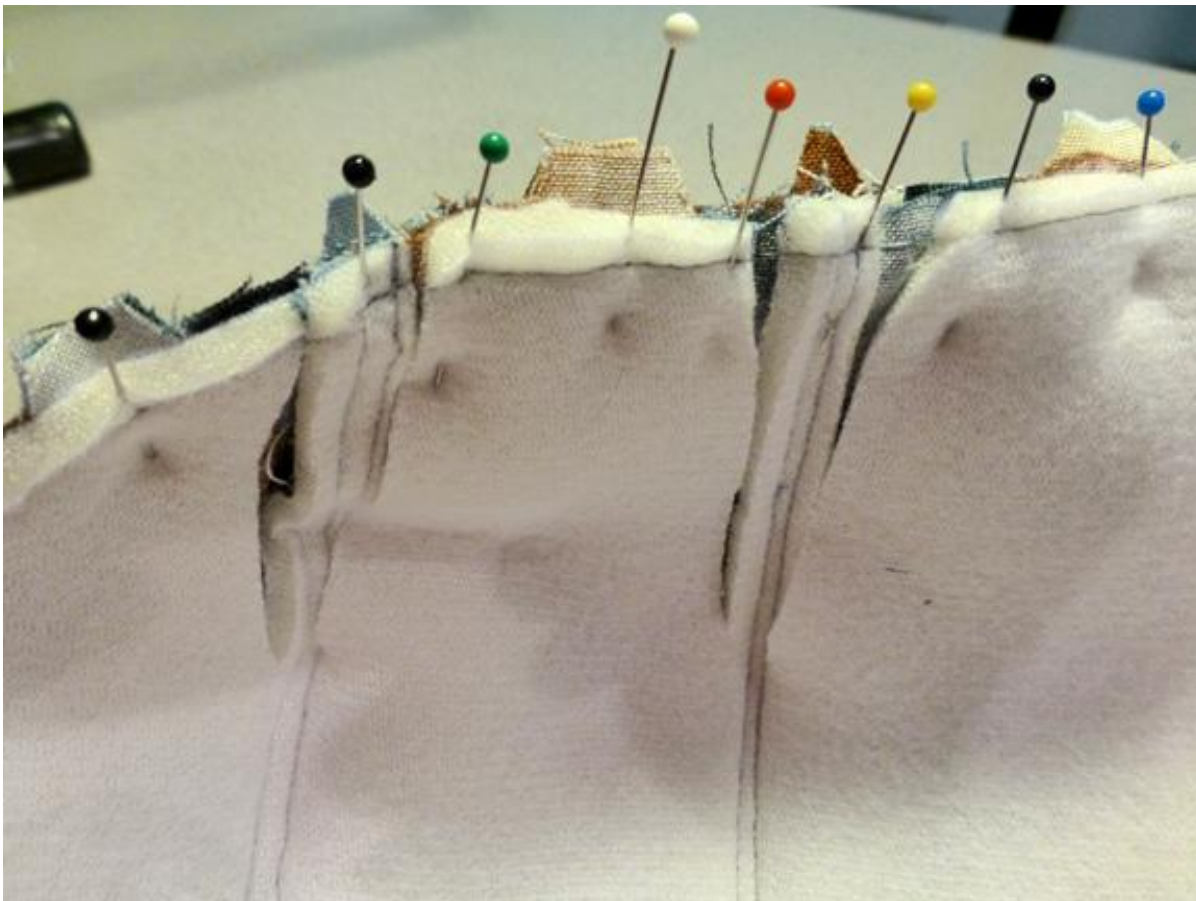


Step 10- This is how your Snap Pouch looks once you match up the double notches with the Base.

## Attaching Base to Snap Pouch– steps 8-11



Step 10 (cont)-  
Once you match up the segment seams with the single notches of your Base, the fabric exposed within the cutout area quite naturally will “bend” toward the nearest double notch.

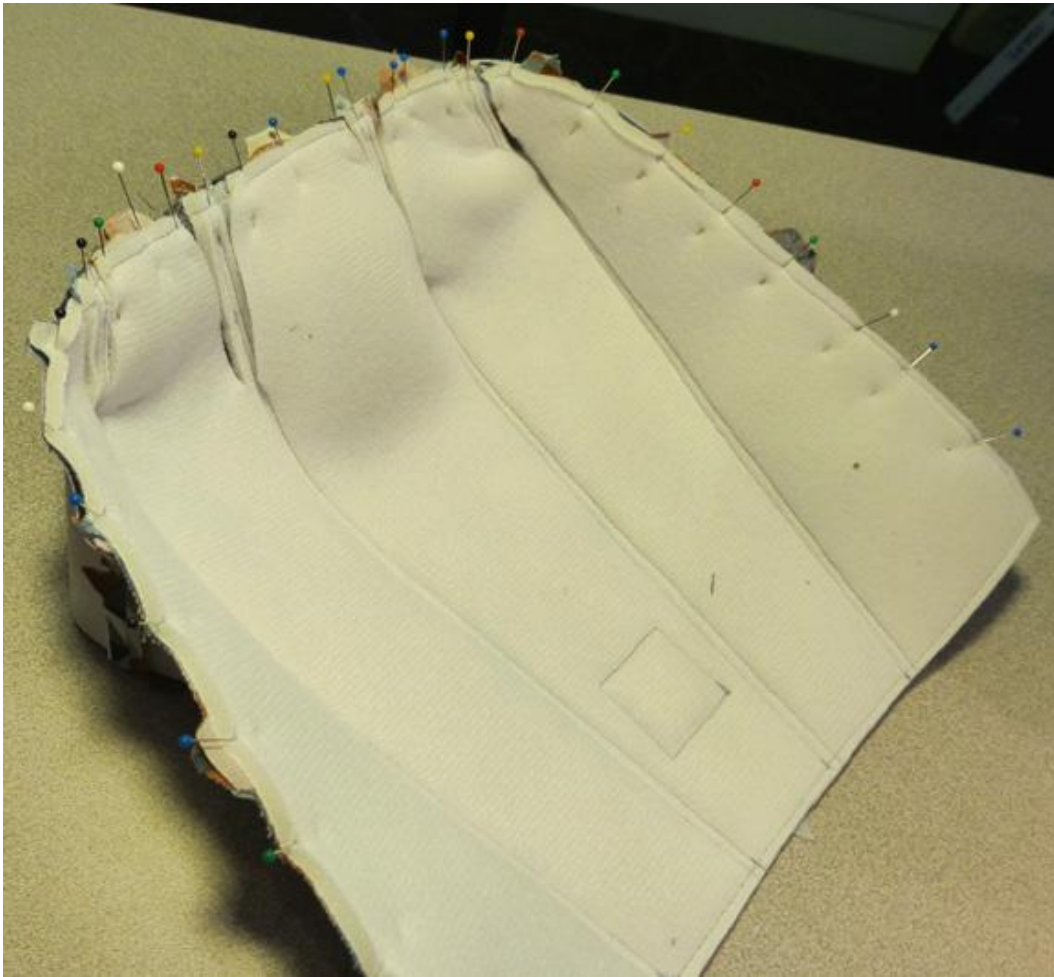


Step 10 (cont)-  
First make sure the edges align with those of your Base, then pin them in place.

Once this is done, you'll notice that the cut edges of your S&S will actually touch or come close to touching.

\*Please Note: They really shouldn't overlap much if at all, and it's OK if there's a small gap between the edges as shown to the left.  
(1/4" or so is OK.)

## Attaching Base to Snap Pouch– steps 8-11



Step 10 (cont)-

Here's how your Snap Pouch should look once your Base is completely pinned in place.



Step 11 (cont)-

And here's how the exterior side of your Snap Pouch should look once your Base is stitched in place.

\*Please Note-  
This is a weight bearing seam, so reinforce the stitching along the entire seam.