

Uptown Saddlebag

Lining— steps 45-47



Stitch 5 darts into curved edge of BOTH remaining Flap Lining's. (Note: darts are located at all five double notches, and are indicated on the #17 pattern piece.)

Clip darts open & press flat.

Here's how the right side of your lining will look after it's pressed.



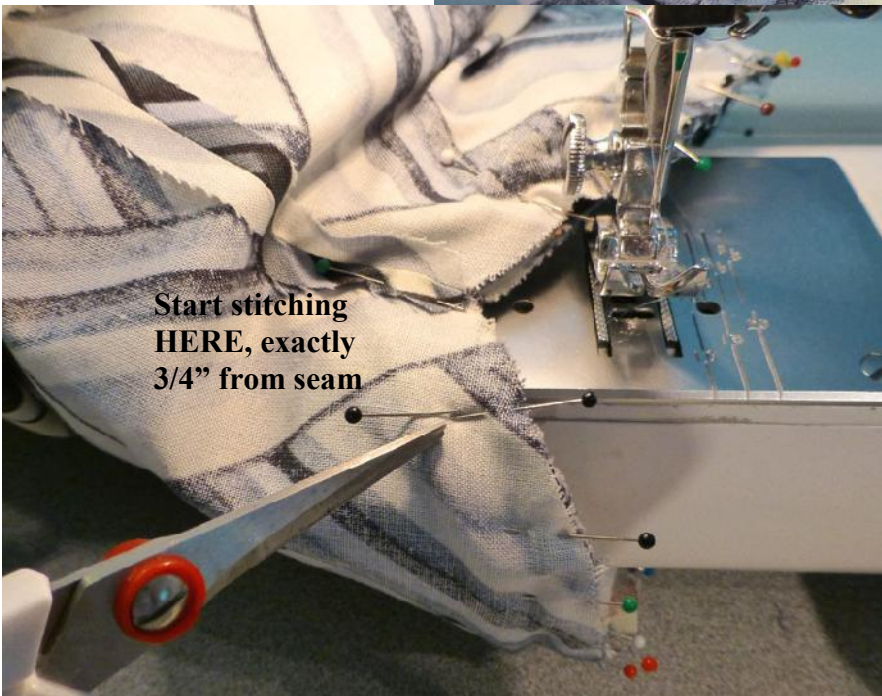
After your linings are stitched together in step 46, pull Flap lining RST over ENTIRE Bag exterior.

Lining— steps 45-47



Your zipper will be sandwiched between your layers.

Now align your Lining to the curved edges of your Flap zipper, matching both sideseams & double notches. Pin to secure it in place.



Begin stitching a full 3/8" from edges beginning exactly 3/4" from the sideseam that is nearest the bottom of your zipper. (just like in step 39).

Lining— steps 45-47



Continue stitching around entire opening a full 3/8" from edges.

Just like in step 39, as you approach the side seam at the top end of your zipper, place your needle exactly INTO the seam, stop stitching, but leave your needle in the seam.

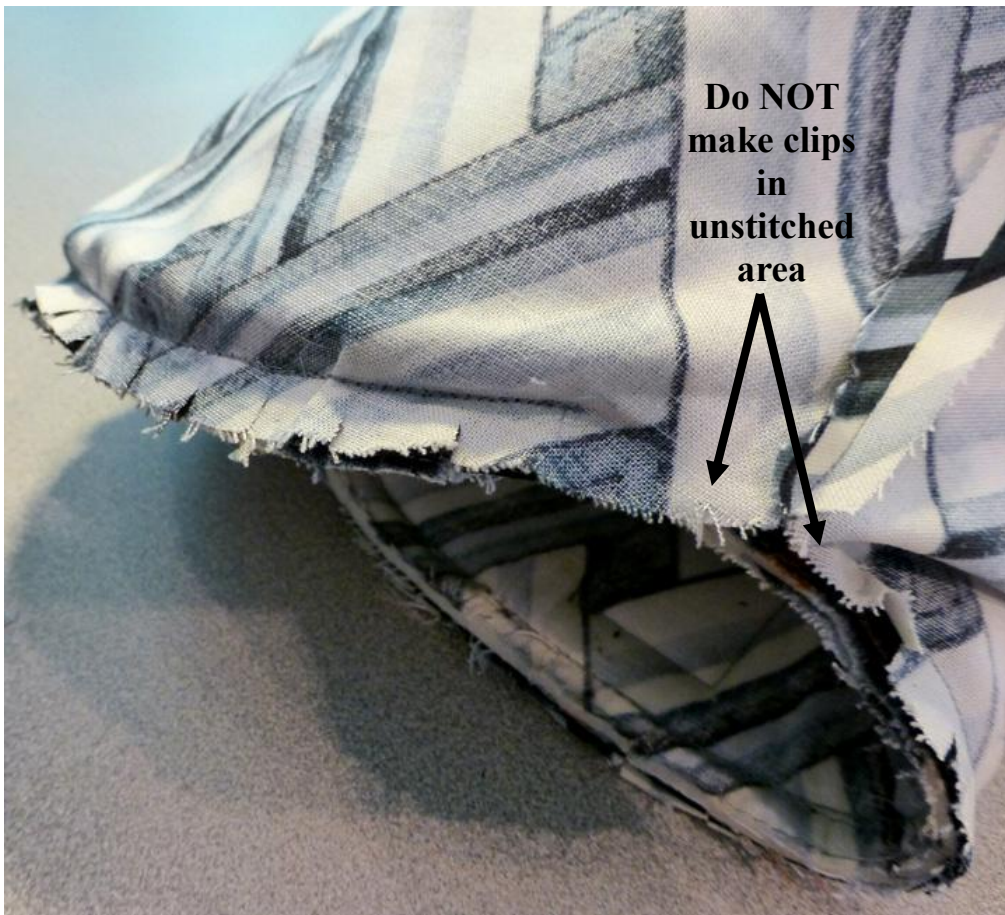


Now lift your presser foot and pivot your Flap fabric so that your needle is now a **FULL 3/8"** from the opposite fabric edge.

Lining– steps 45-47



Now lower your presser foot and continue stitching around Flap opening, a **FULL 3/8" from edges, stopping exactly 3/4" from seam on opposite side.**



Restitch entire seam for security.

Now carefully make small clips into the fabric & zipper edge. (do NOT clip unstitched area near zipper bottom).

Press lining WST into Bag