

Uptown Saddlebag

Flap Zipper– steps 37-39

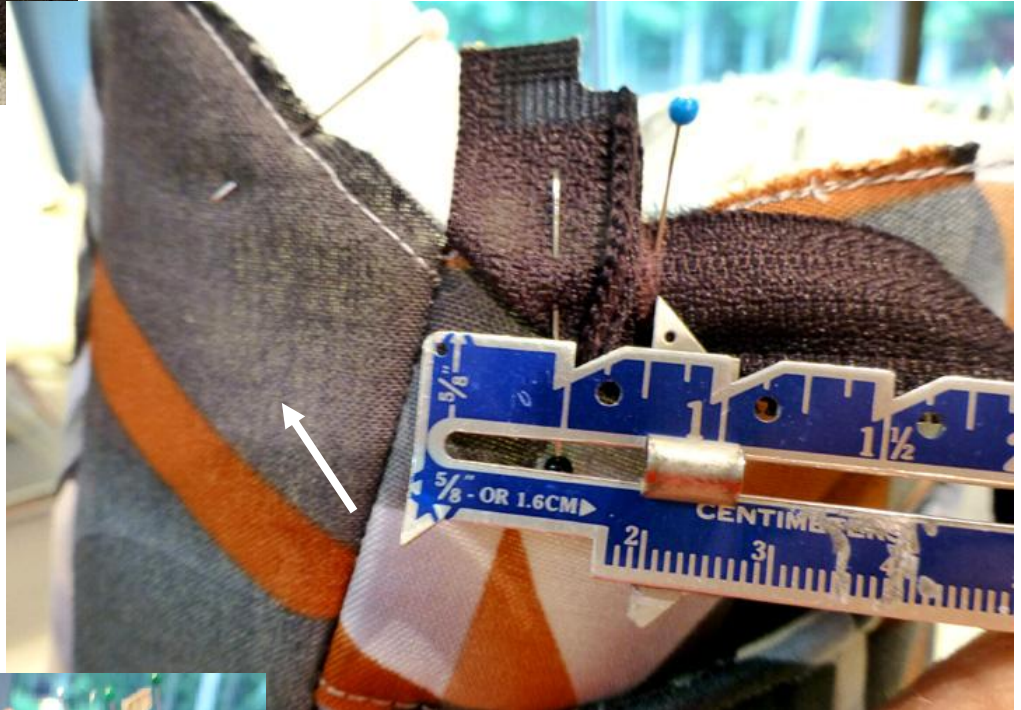


37) Mark a line on WRONG side of zippertape extending from top zipper-stop corners out to edge of EACH tape.
Separate zipper pieces now.

Place zipper mark of 1st zipper piece RST & exactly 3/4" from Flap side seam.

Bend top zipper end UP so its sticking up OVER the Flap edge.

Continue pinning zipper in place along top curved edge of UnderFlap.



Your last pin should be placed **exactly 3/4"** from opposite Flap side seam.

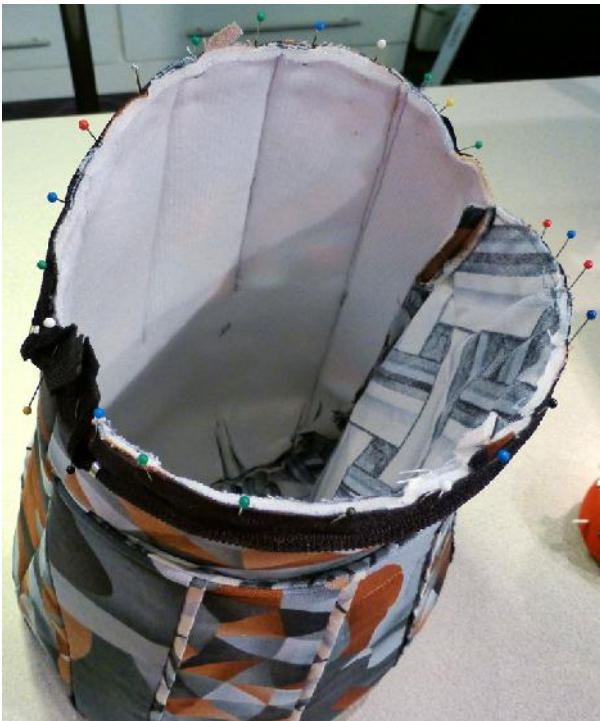
Pin 2nd zipper piece in place the same way on 2nd Flap edge.



Flap Zipper (cont.)– steps 37-39



When this process is completed correctly, this is the way your top zipper ends should look, with **both of them bent UP** over the raw edges of your Flap.



Here's your zipper, all pinned in place and ready to stitch.

Begin your stitching exactly 3/4" from seam on bottom end of zipper.

Stitch a scant 3/8" from edges around entire Flap opening.



Flap Zipper (cont.)—steps 37-39



Continue stitching a scant $3/8$ " from edges around ENTIRE circumference of Flap opening, which includes OVER your bent top zipper ends.



In order to get a nice crisp look at the top end of your zipper, I recommend the following:

As you approach the Flap seam at the top end of your zipper, you'll be stitching a scant $3/8$ " from your edges. As your needle is placed exactly INTO the seam, stop stitching, but leave your needle in the seam.

Now lift your presser foot and pivot your Flap fabric so that your needle is now a scant $3/8$ " from the other Flap fabric edge.



Now you can continue stitching a scant $3/8$ " from your 2nd zipper edge stopping exactly $3/4$ " from the seam on opposite side of Flap.