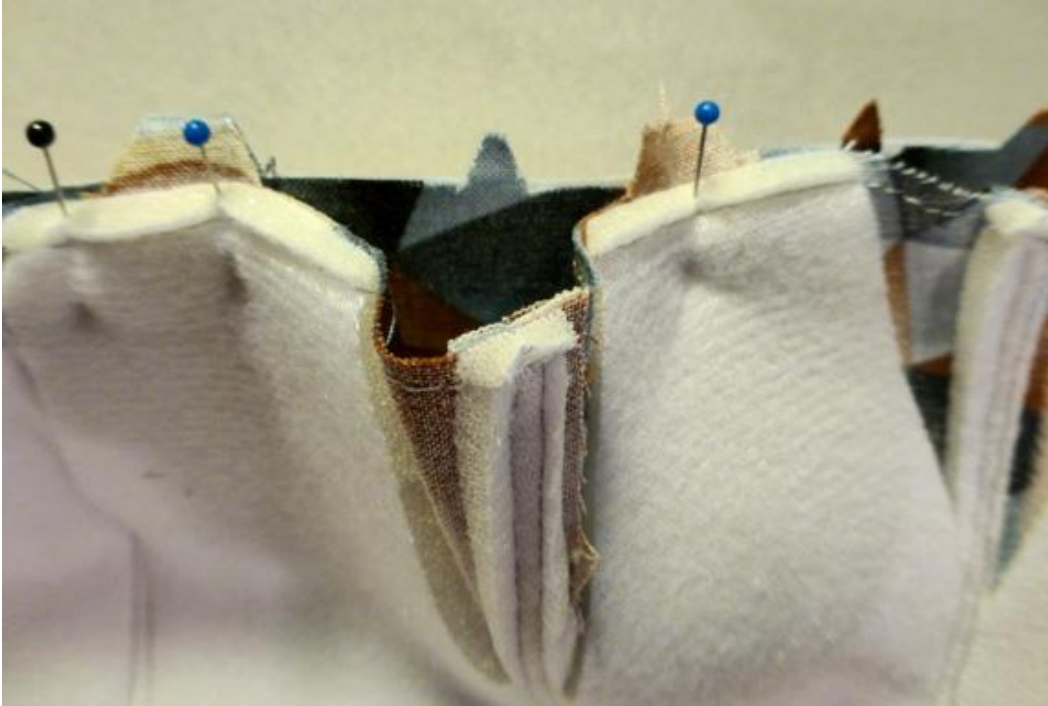


Uptown Saddlebag

Bag Assembly– step 36

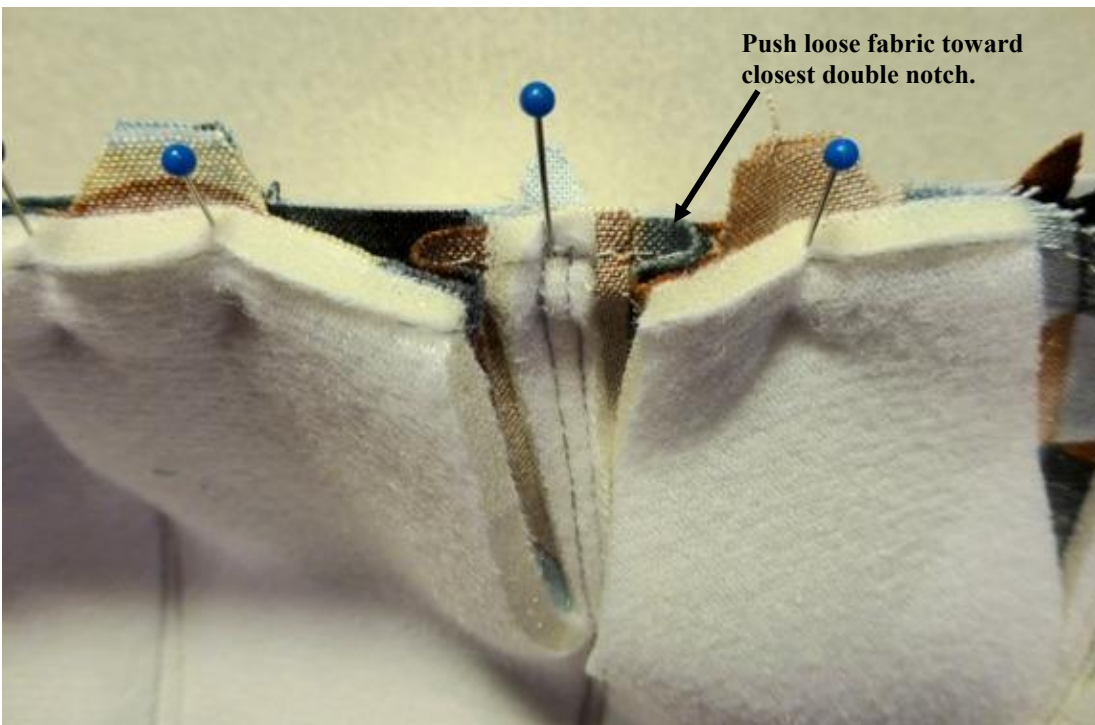


First you have to get the side edges of your UnderFlap lining matched up with those of your Flap Back.

To do this, you must sandwich (somewhat “crushing”) your Snap Pouch between these layers. (don’t worry, the S& S layer will allow it to just “pop” back as it should be.)

First, match up double notches of Flap Lining & Flap Back. Pin them together.

Next, match & pin Flap Lining single notches to Flap Back segment seams.



Push loose fabric toward closest double notch.

This procedure is reminiscent of step 10.

You’ll need to push that loose Flap Back fabric (between S&S cutouts) toward nearest double notch.

Pin in place UNDER the S&S layer so these edges align with Base edges.

(The S&S cutout edges should be close to or touching each other, but really should not overlap.)

Bag Assembly– step 36



Now that I have these two sections combined, you can see how I had to “crush” the Snap Pouch Lining and the Flap Back together.

You can also notice that while the cut edges of the S & S are not close or touching, they definitely aren't overlapping.



Now it's ready to stitch.

Stitch in place 1/4" from raw edges thru ALL layers.

Do Restitch ENTIRE seam for security because this is a weight-bearing seam.



Here's the view from the other side, just to give you another look.