

# Uptown Saddlebag

## Phone Pocket & Phone Pocket Back— step 29



29a) Pull Phone Pocket bottom edge UP so it is above the top edge of your zipper (RS of Phone Pocket facing UP).



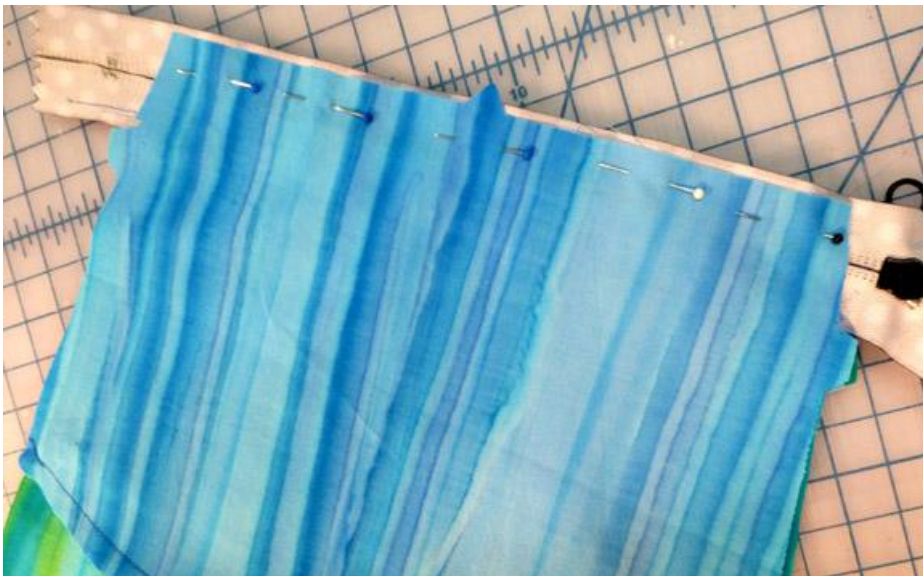
29b) Align Phone Pocket Back (#19) RST with 5-notched Phone Pocket edge. Stitch 1/4" from edges.



## Phone Pocket & Phone Pocket Back (continued)– step 29

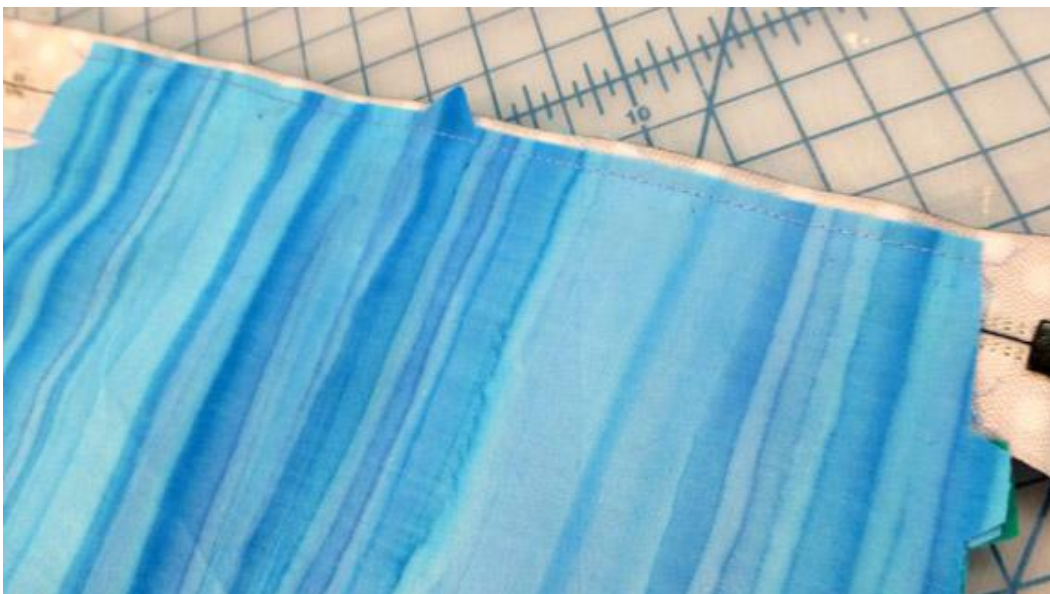


29c) Return Phone Pocket & Back to its position behind and WST with your Segment B's. If you are using a 1" wide zipper, then the top edge of your Phone Pocket Back should be ~even with the top edge of your zipper, as it is in the picture to the above right. Baste in place close to zipper edge.



\*Please note– if you are installing a zipper that is 1 1/4" wide, (like the one at left) then the top edge of your Phone Pocket Back will be ~1/8" BELOW the top edge of your zipper.

Now stitch the top edge of the Phone Pocket Back in place ~1/4" from the edge of your zipper.



(This will not be a problem, because in Step 30, you will be attaching your Segment "A" unit to the zipper with a 3/8" seam.)