

DittyRoo Pictorial Help- DRstep42-43.pdf

Finishing touches for the Rim Edging



Step42– Pull your piping ends now to make your Rim Edging 'stand-up'. (How much it stands up is completely up to you.) I like pull my piping ends until the Edging is straight up, but not tilting into the bag.

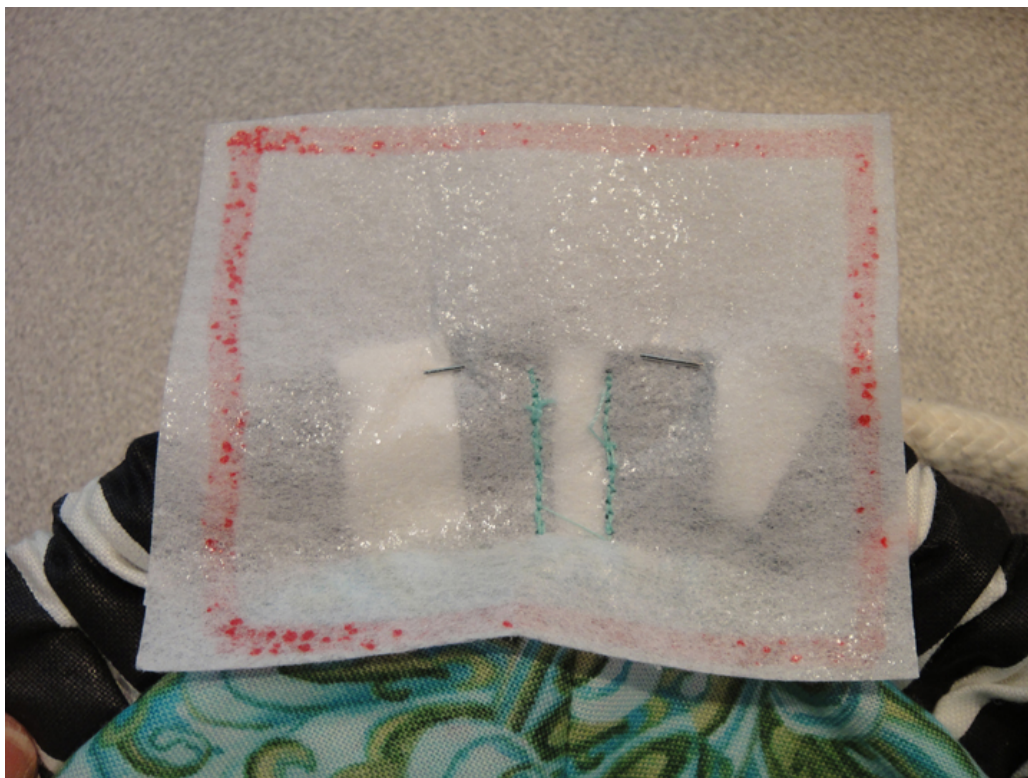


Step 42a- (FYI– I've outlined the interfacing scraps so you can see 'em better). Once you're happy with the look of your Rim Edging, center your interfacing scrap BEHIND the edging junction. Now 'stack' your piping ends like above so the Rim Edging ends can meet. Pin thru Edging to the interfacing, to hold it in place.

DittyRoo Pictorial Help- DRstep42-43.pdf (cont.)



Step 43a— (I've used an off-color for the stitching so you can see it better.) Carefully stitch close to each Rim Edging end & OVER both piping ends to the interfacing underneath. Do NOT stitch below Rim Edging into area of Loop.) Reinforce this stitching. It's important.



Step 43b— Here's how that same stitching looks on the back side (the interfacing side).

DittyRoo Pictorial Help- DRstep42-43.pdf (cont.)



Step 43c— Cut away the excess interfacing close to the stitching. (As you can see, You really don't have to cut it SUPER close to the stitching)



Step 43d— With that done, you can cut your piping ends now, close to the stitching. (Again, you don't have to worry about the piping fraying right now, because the stitching will keep it secure.)