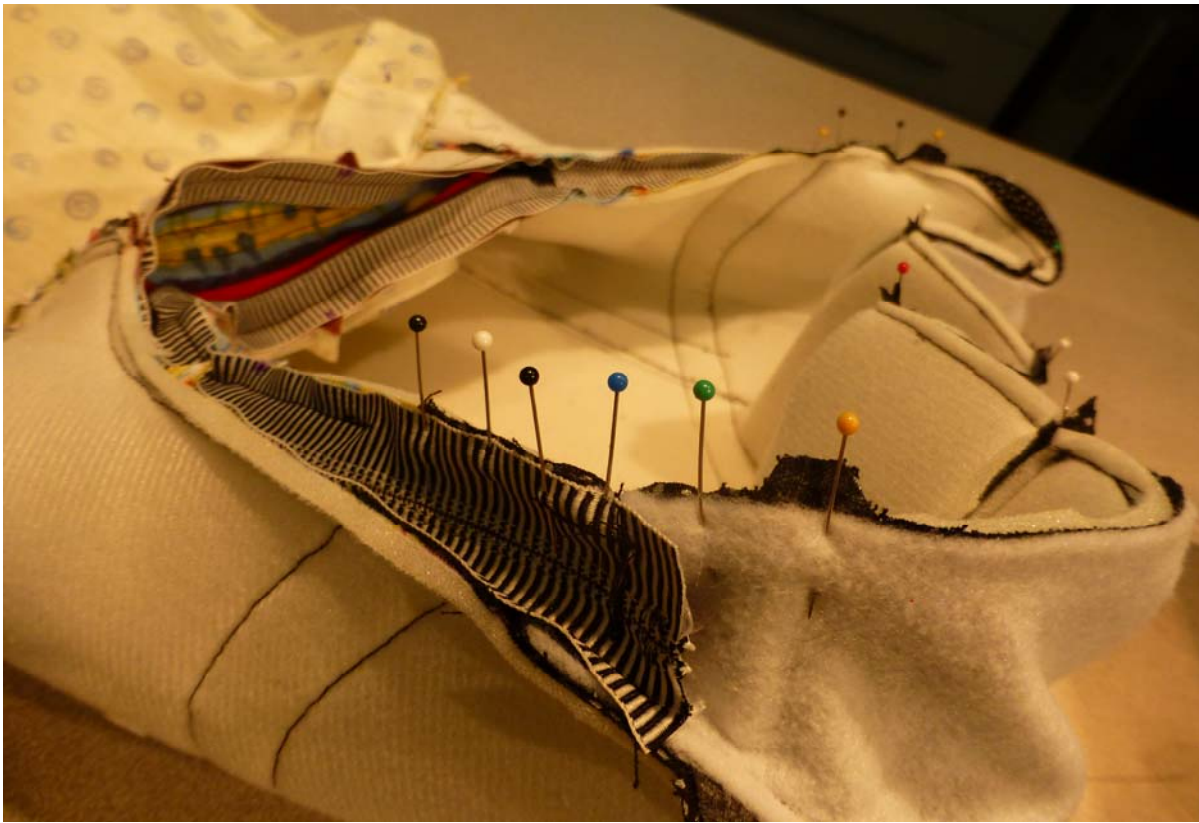


Attaching 2nd zipper edge (part 2) - Step 38c



Now you can proceed to align the rest of the zipper and the Base edge to the Bag Back.

In this picture you can see where I have first matched all the notches on the Bag Trim to those of the free Base edge.



This is just another view of the configuration above.

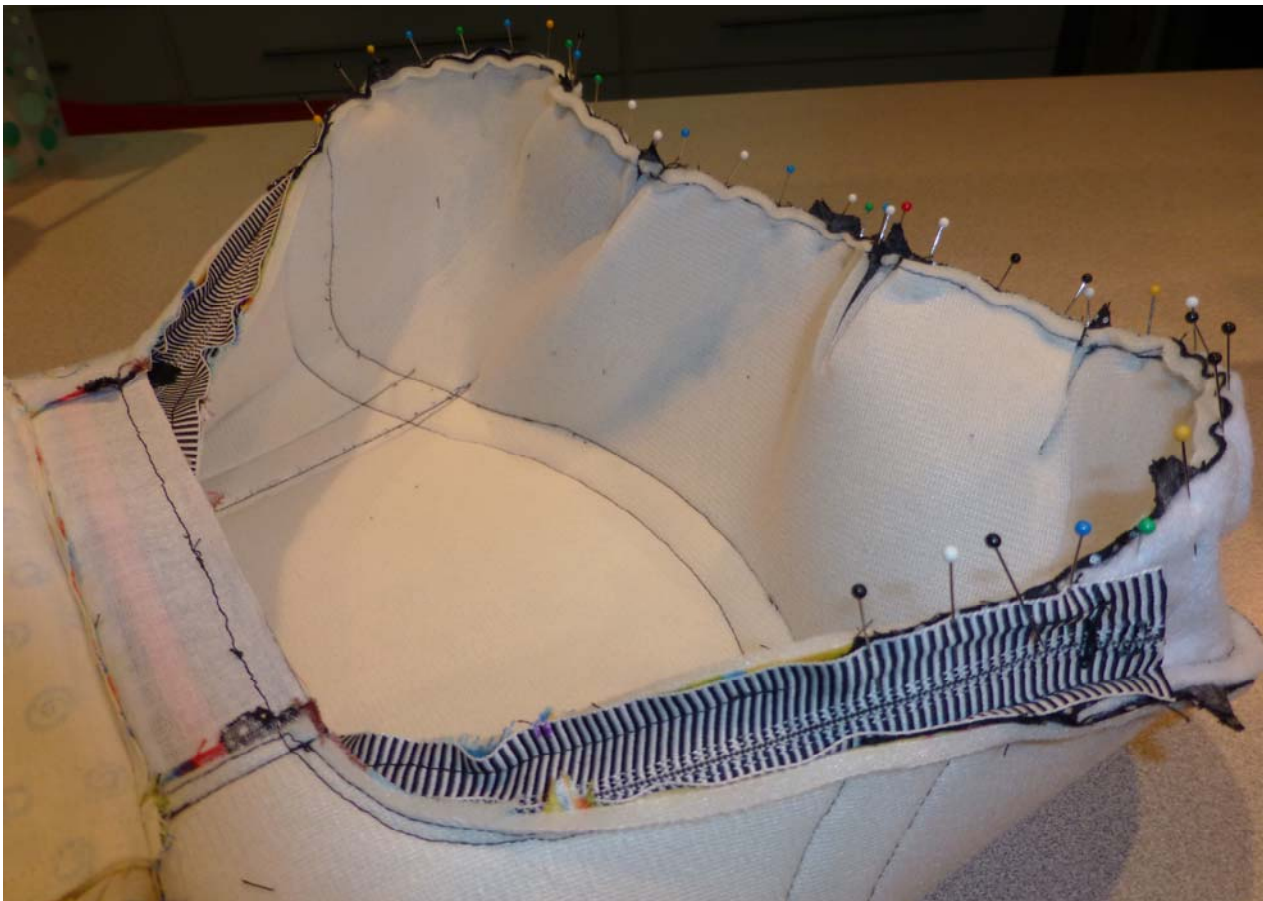
I thought it might be helpful to see it too.

Attaching 2nd zipper edge (part 2) - Step 38c



And in this picture the entire bottom edge of the Bag Back is pinned to the Base.

This view shows you how it looks from underneath the Base.



And this picture shows you how it looks from above the Base edge.

Now all that needs to be done is to stitch it up 1/4" from the edges.

Don't forget to restitch it for security.