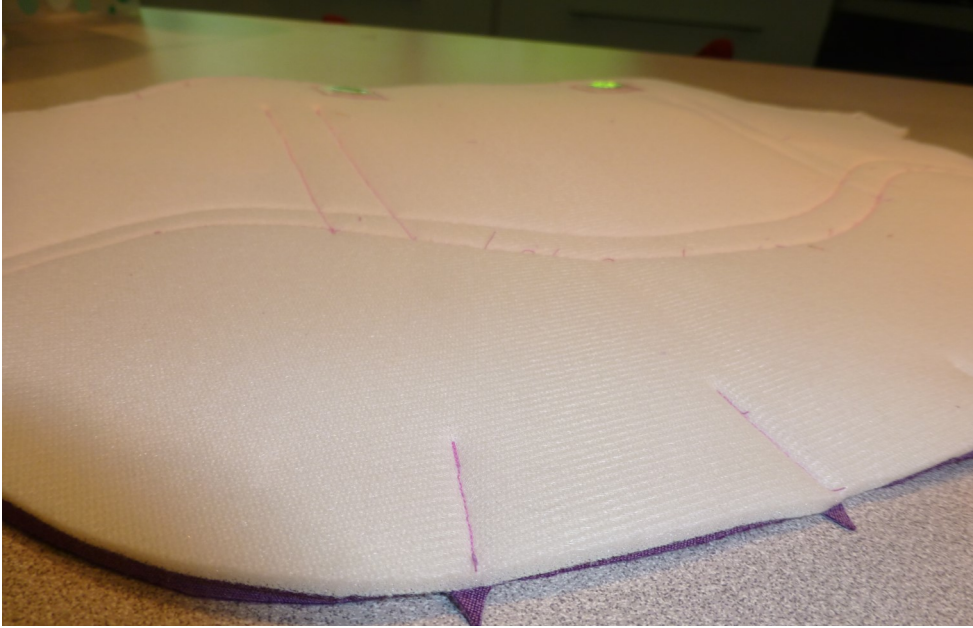
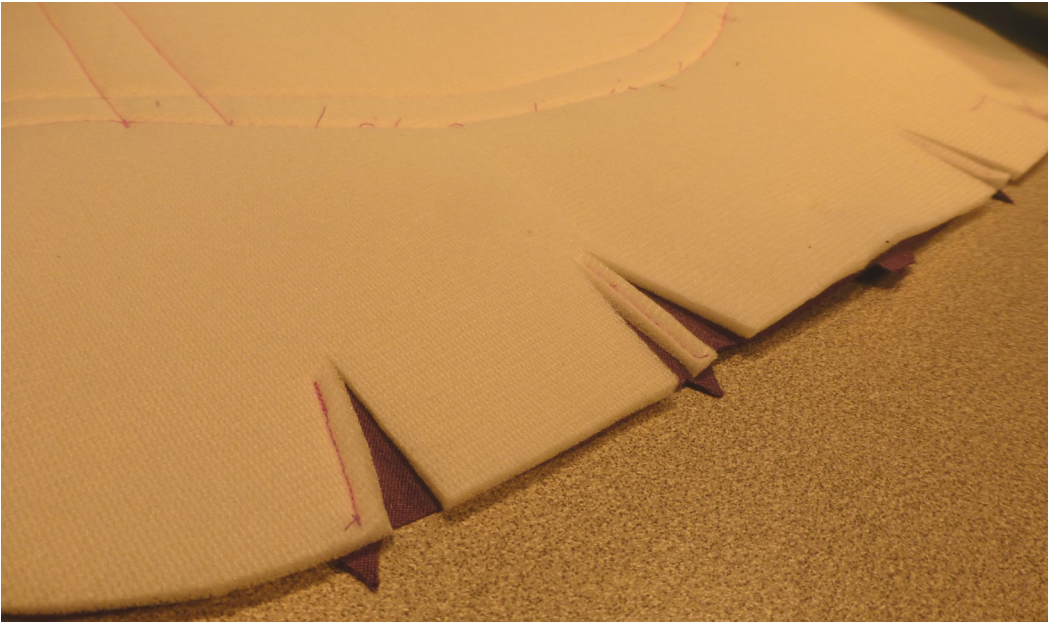


Preparing the bottom edge of the Bag - Step 19+20

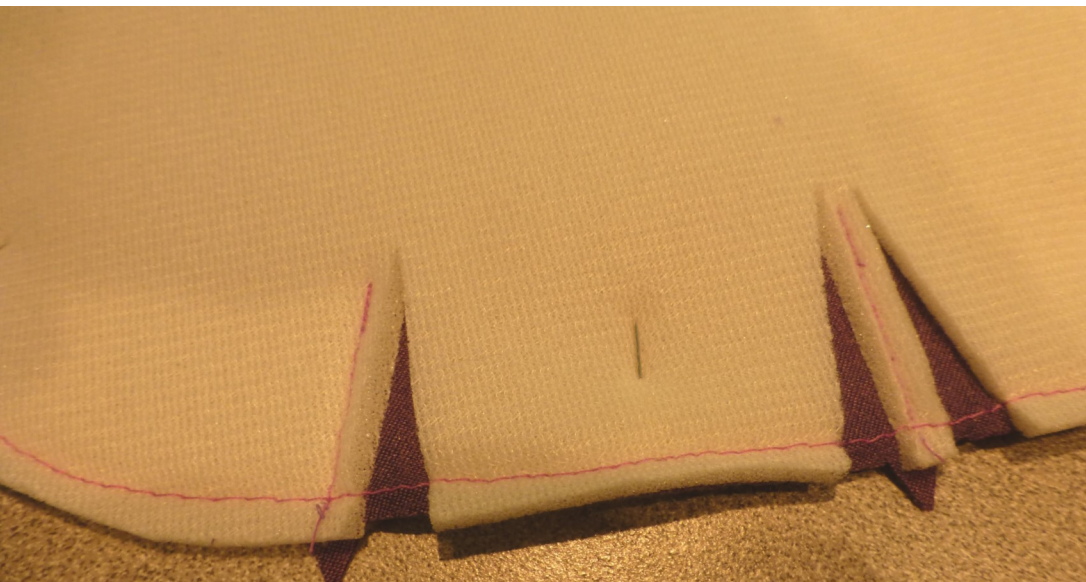


Beginning at outside edge of Bag, stitch inward (for ~1") at each notch #1-4..



Flip Front & Back units ESD on flat surface. **Carefully** cut away six triangles of **foam** (~1" tall X 1/4" wide) along bottom edge of both units as follows:

- A) from **inside edge ONLY** of notches #1 + 4, and...
- B) From **BOTH sides** of notches #2 + 3.



Now baste across bottom edges of both units to secure the loose foam cutout edges to fabric edge of Bag.