

First— you need to locate the “X’d” line on each one of the THREE pattern templates you see below.

# PortaPocketsPLUS

## Additional pictorial help

### For assembling your CC Caddy

#### Template pieces

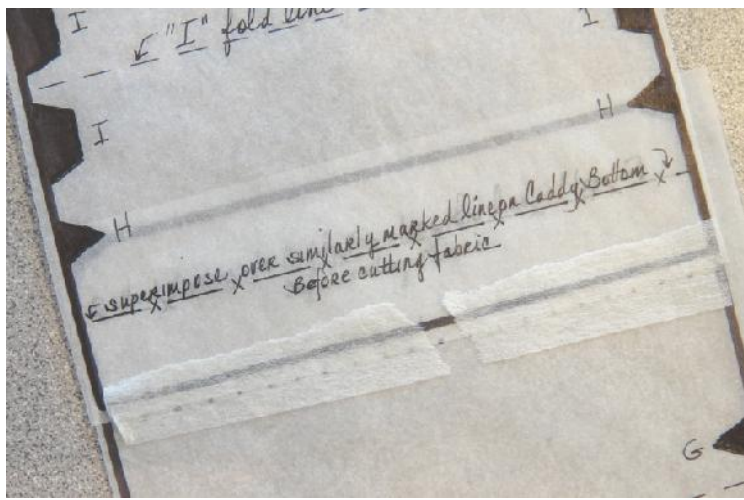
#### Page 1 of 2



If you wish to make a Small CC Caddy for your THIN Insert, then you will need to combine template #7c with #7a.

If you wish to make a large CC Caddy for your BASIC Insert, then you will need to combine template #7b with #7a.

This whole procedure is going to be a WHOLE lot easier to accomplish if you make a copy of each of your templates on tracing paper (because you see THRU it better).



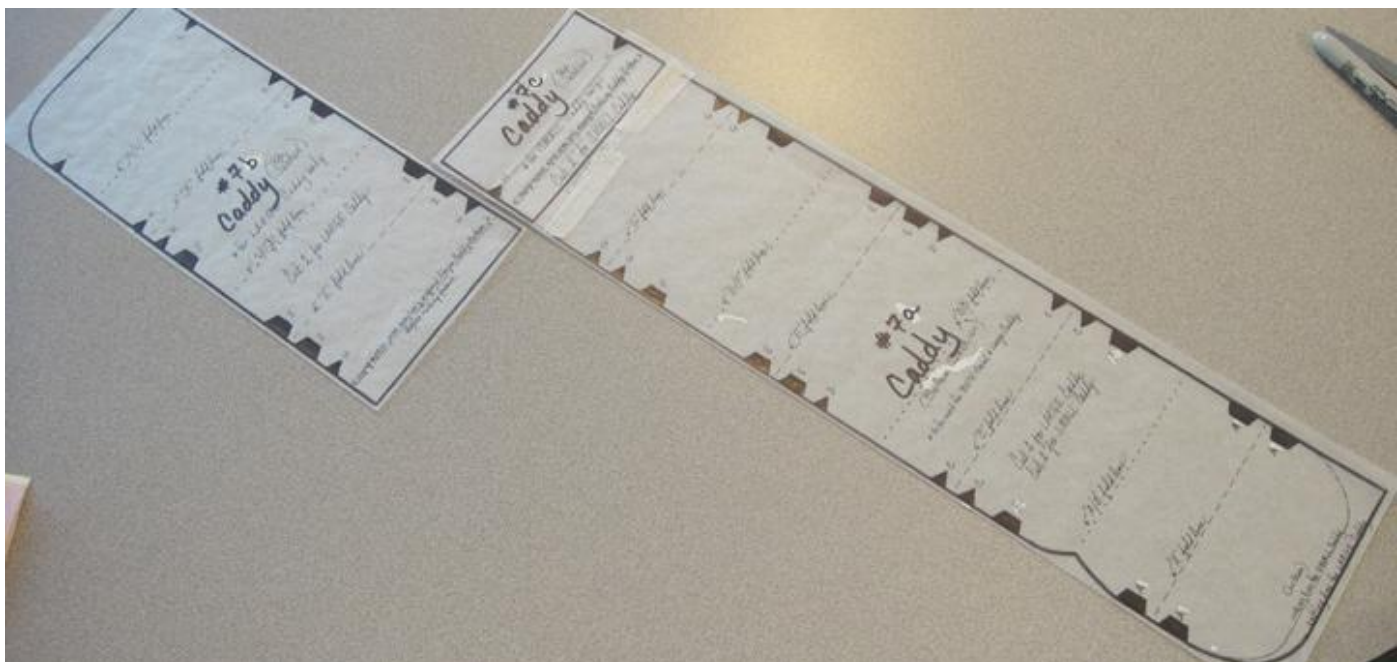
As you can see here, you will want to superimpose one template over the other, aligning the two "X'd" lines.

PortaPocketsPLUS  
Additional pictorial help  
For assembling your CC Caddy  
Template pieces  
Page 2 of 2

Here's a closeup on the left of how it should look. Once you're happy with the alignment, then tape it in place. :)



Here's our LARGE CC Caddy taped and ready to go. We'll use #7a again to make our SMALL CC Caddy template below.



Now, simply, remove #7b from #7a and repeat the procedure, aligning #7c along the "X'd" line to make your template for your SMALL CC Caddy.