

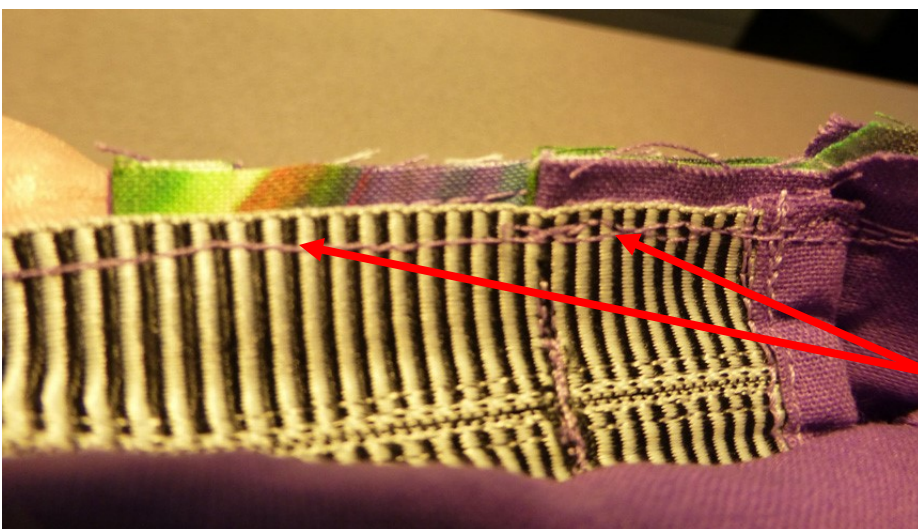
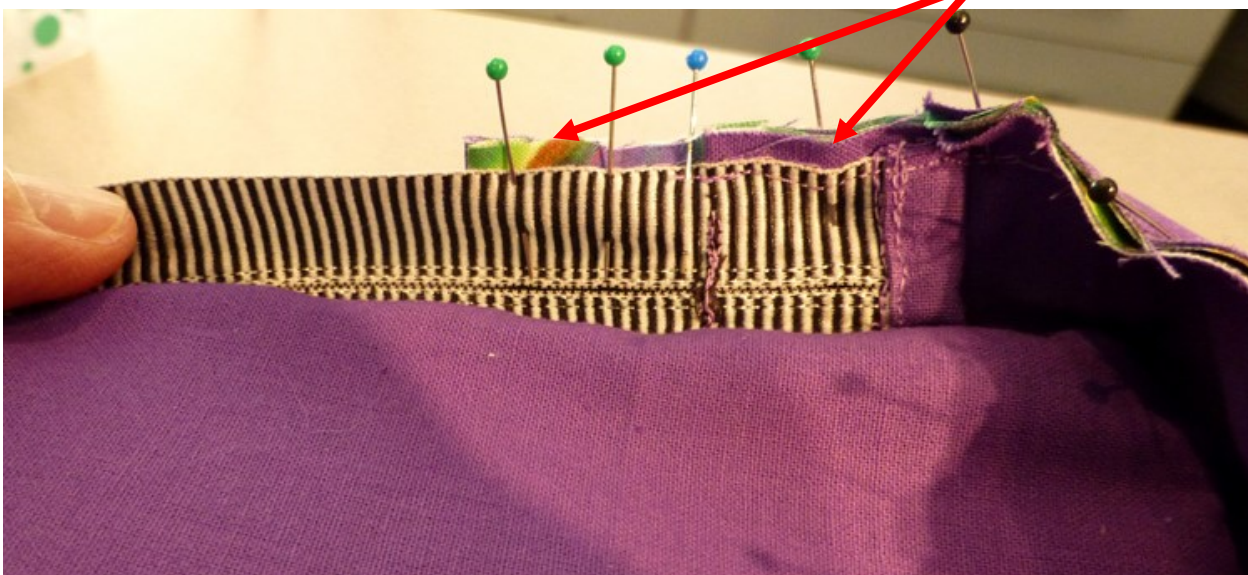
Adding the Expanders - step 14



With both zipperheads located at top of Zip Pouch, place Expander EST along free edge of Wall aligning all 4 sets of double notches.

Stitch a scant 1/4" from EXPANDER raw edges through all layers of fabric.

As you can see in this shot below, the Expander edge is even with the Wall edge ...



AND I have caught the top edge of the zipper in this stitching and that's important.