

# Magnet Preparations- Prelim step A

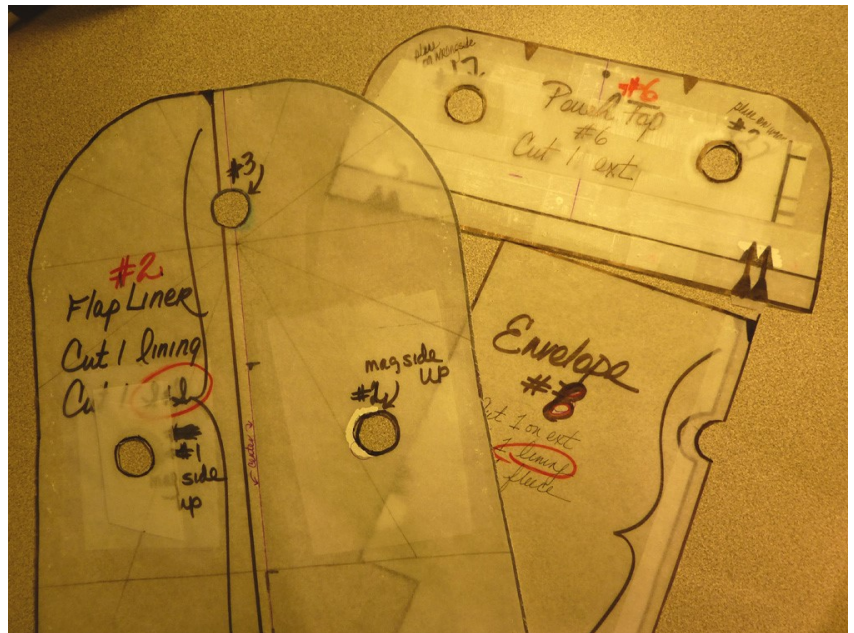


At left you can see how I've labeled my magnets sets 1-3. Please bear in mind that these marks *MIGHT* be visible thru your fabric, especially if you're using a light-colored fabric for your lining. You can alternatively mark the non-magnetic side of your magnets.

(And I AM aware that a few of these magnets are cracked. Sometimes they come in that way so I keep those for myself and use them on my samples, and just so you know, I NEVER sell anyone a cracked magnet.)

In these next couple of shots you can see how I've cut the centers of my magnets spots. (Yes, these are "working pattern pieces and I know they're well-worn.") :) This is the easiest of all possible ways to transfer these markings to your fabric.

Please keep in mind that your magnet *SHOULD* cover up the markings you make on your fleece and your Soft & Stable... unless you get over-zealous.



\*\*\*Please note: For many more pictures and instructions about marking your fabrics, placing these magnets, and then sewing them in place, I'll direct you to two posts that are already available online. Just copy & paste these addresses into the browser of your choice and you'll access them.

Placing your snaps: <http://bit.ly/1w1zQ07>

Stitching in place: <http://bit.ly/1uZPFUZ>