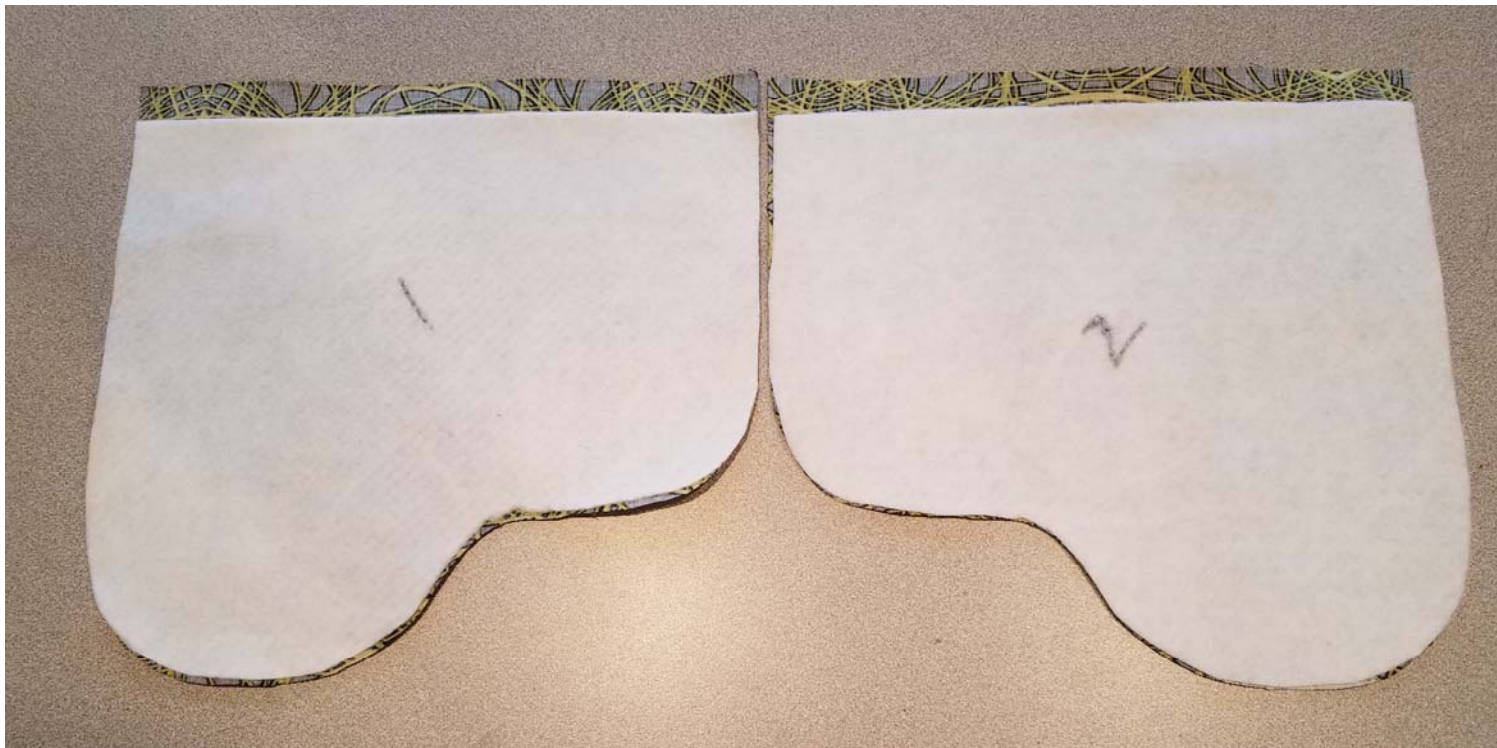


Festival Pocket Belt-
Labeling Panels 1 & 2 -
Step D4



D4. Cut away $\sim 3/8$ " from top edge of both Panels(#1) in fleece. Now fuse a Panel (in fleece) to WS of both Panels(#1) in lining after FIRST aligning bottom curved edges. (There will be $\sim 3/8$ " of un-fleeced area along the top straight edge of each Panel lining.)

****IMPORTANT****

Label the fleeced side of BOTH Panel linings as shown at right, then proceed to step 1 with Panel 1*. (Set Panel 2 aside for step 33.)

**Please note* If you prefer to carry your phone on the left side of your body, then you'll need to reverse these labels AS WELL AS any of the graphic images that depicts the placement of these Panels within the instructions that follow.*