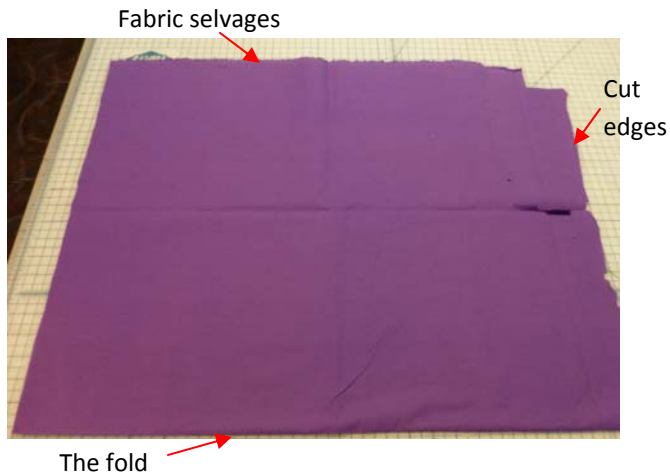
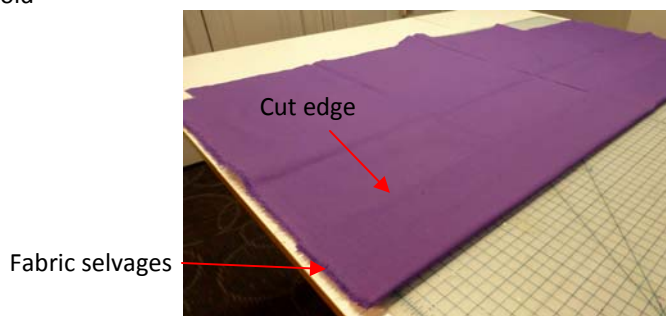


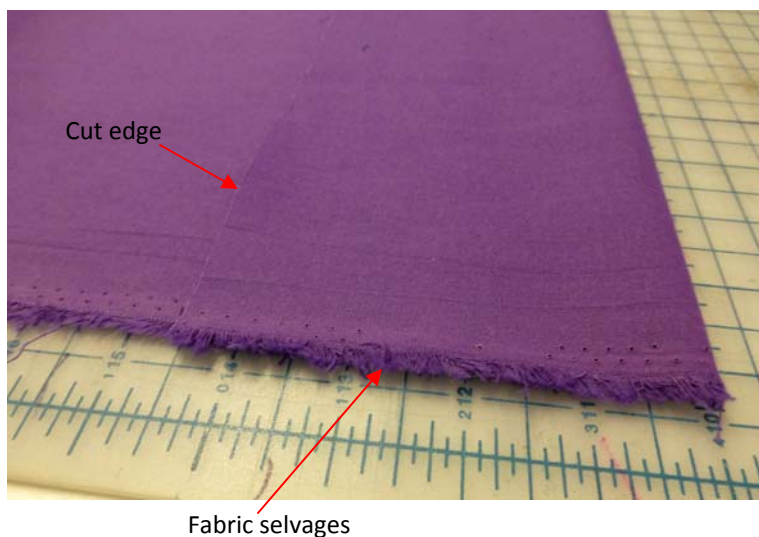
Pattern layout- Page 1, step e



When you buy fabric from the store, most of the time it is sold folded in half with the selvages together along the top edge (as shown at left.)



For the **Card Cozy** however, it is our recommendation that you unfold the fabric completely, then re fold it lengthwise so that selvages are the side edges.



If you've purchased 1/4 yard of fabric as directed, then your cut edges should match (mine do not because I have much more than 1/4 yard).



In these 2 graphics you can see than the Card Cozy (#1) pattern piece (for both the small and the large size) fits perfectly on the fabric this way, (and the crosswise grain won't be a problem).

As a matter of fact,,, you can actually squeeze TWO of the Small Card Cozy templates onto a 1/4 yard cut of fabric this way (above)! Cool!

