

First— you need to locate the “X’d” line on each one of the THREE pattern templates you see below. (#1a, #1b, and #1c)

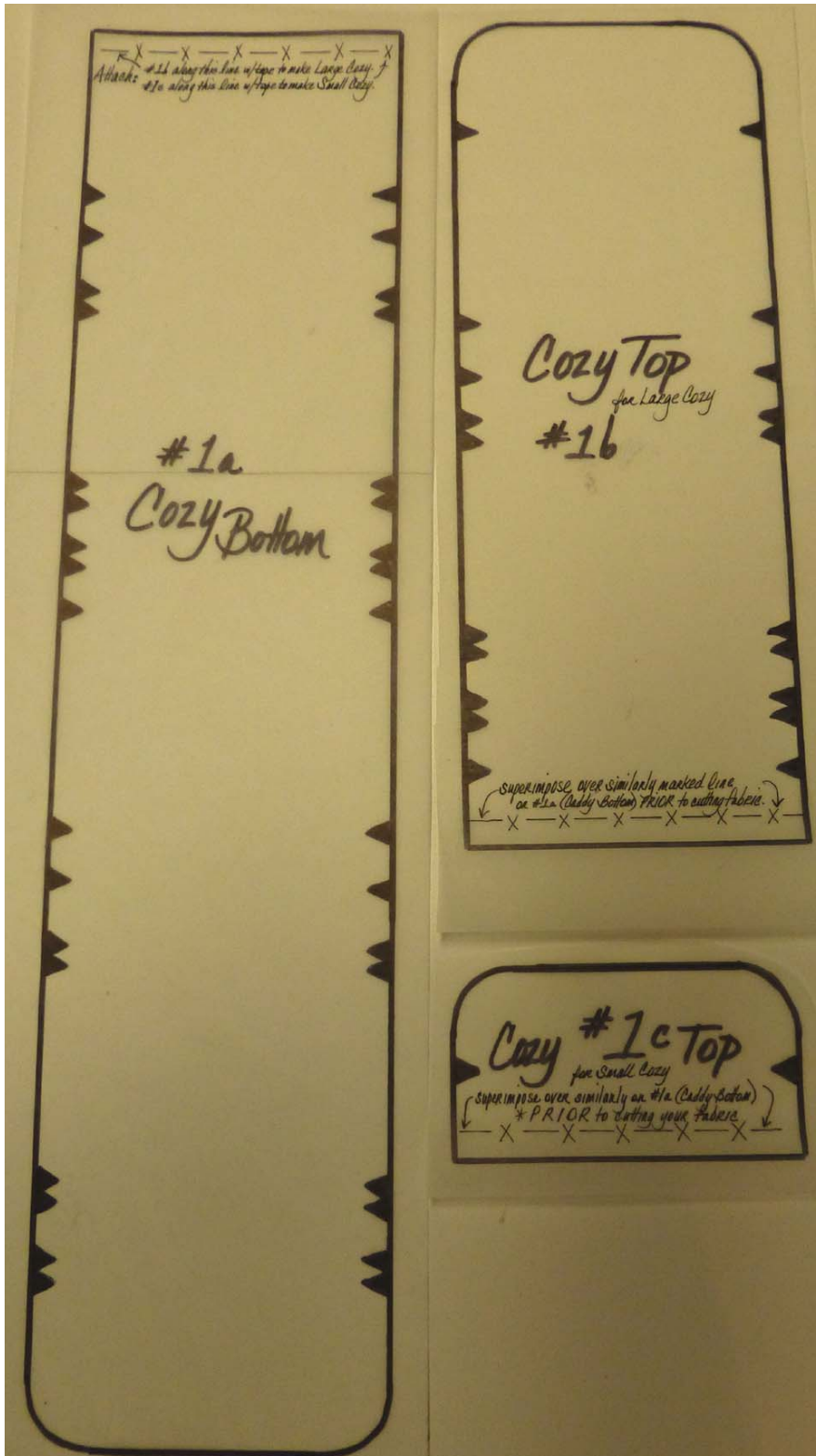
Card Cozy

Additional pictorial help

For assembling your Card Cozy

Template pieces

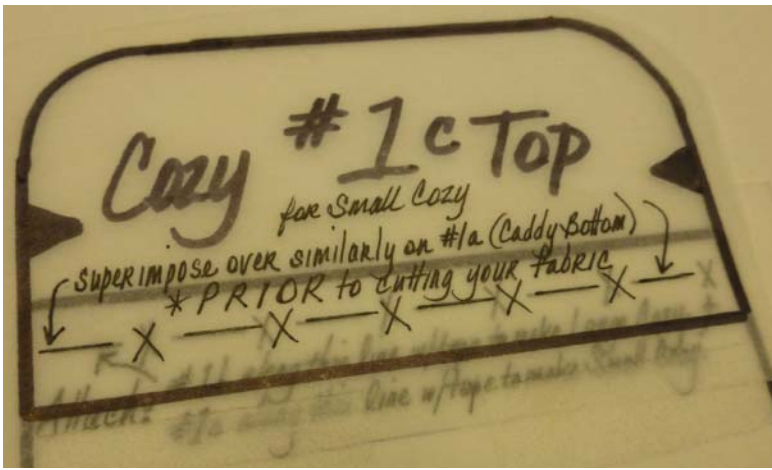
Page 1 of 2



If you wish to make a Small Card Cozy, you will need to combine template #1c with #1a.

If you wish to make a large Card Cozy, then you will need to combine template #1b with #1a.

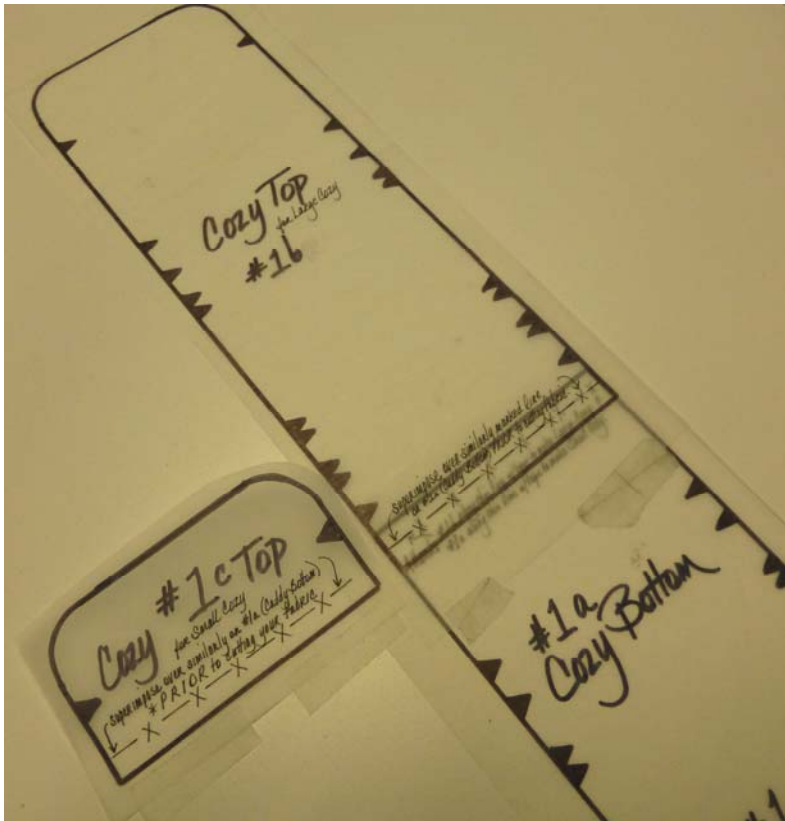
This whole procedure is going to be a WHOLE lot easier to accomplish if you make a copy of each of your templates on tracing paper (because you see THRU it better).



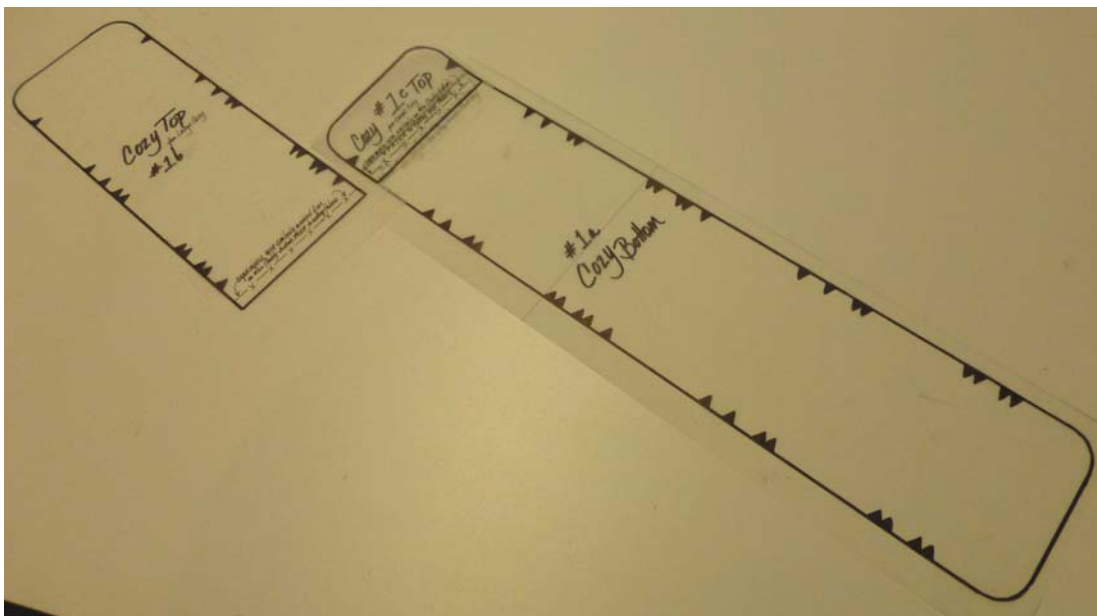
As you can see here, you will want to superimpose one template over the other, aligning the two "X'd" lines.

The Card Cozy
Additional pictorial help
For assembling your Card Cozy
Template pieces
Page 2 of 2

Here's a closeup on the left of how it should look. Once you're happy with the alignment, then tape it in place. :)



Here's our LARGE Card Cozy taped and ready to go. We'll use #1a again to make our SMALL Card Cozy template below.



Now, simply, remove #1b from #1a and repeat the procedure, aligning #1c along the "X'd" line to make your template for your SMALL Card Cozy.