

## Bangle Buddie- Attaching the Grab n' Go Handle - Step 28-34



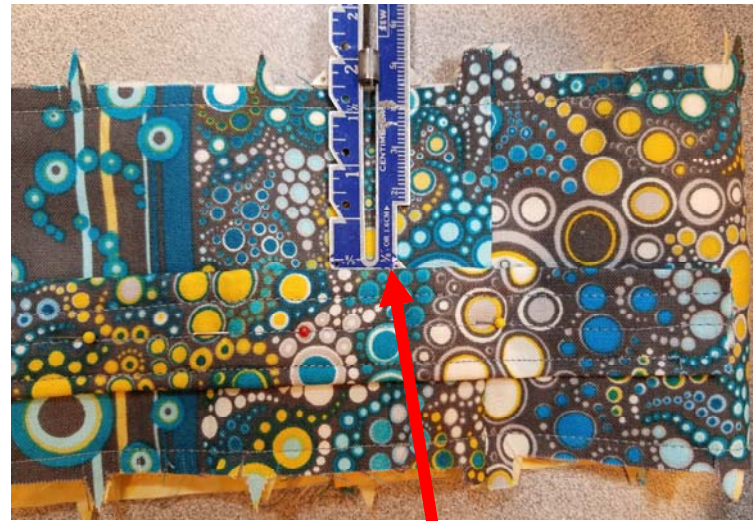
Slide ALL rings to middle of Handle & secure them there with long pins or safety pins, away from the stitching action to come in steps 28-34.

*(The O-ring is only necessary for the Backpack option.)*

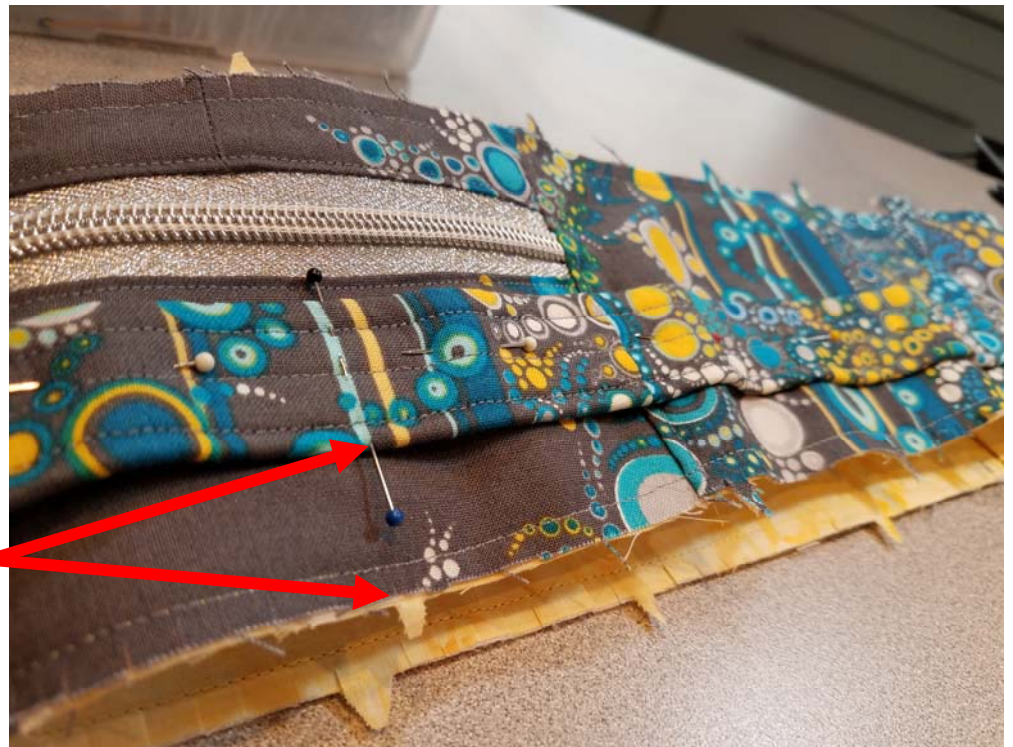


28) Retrieve Wide Panel unit (from step 16) & place it ESD on flat surface. Place Handle "seam-side DOWN on Wide BASE so that enclosed webbing end (within fabric extension) is even w/triple notch

(The fabric extension will extend beyond triple notch).



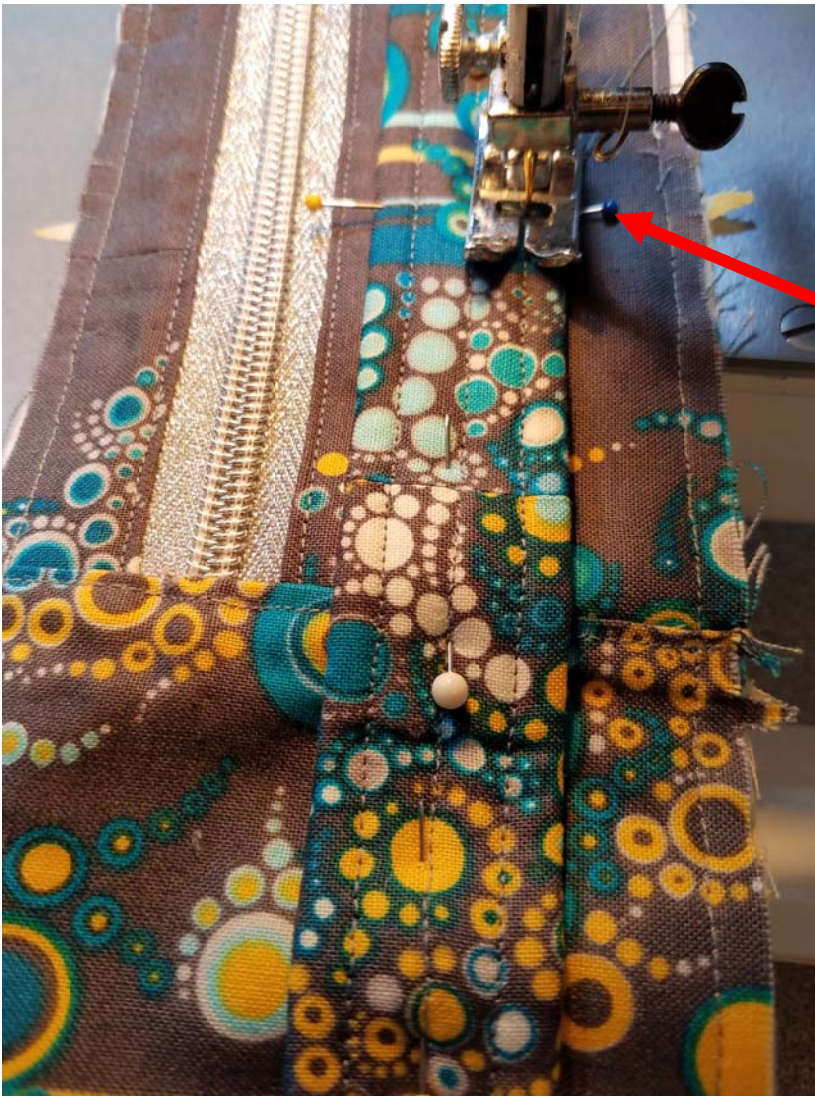
Pin in place so that Handle edge is 1 3/4" away from Thin Panel/Base edge.



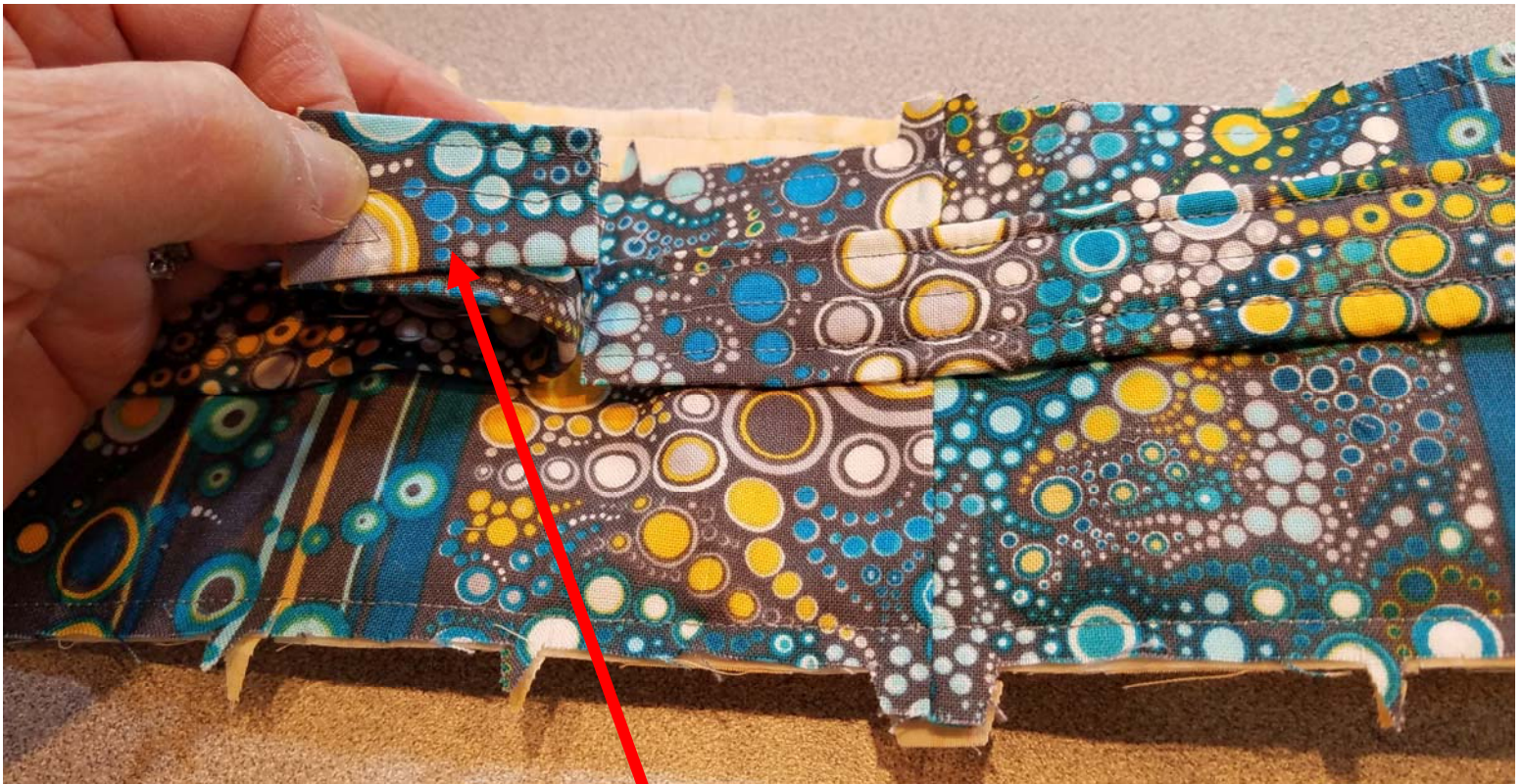
Stop pinning at "C" notch on Wide Panel.



**Bangle Buddie**- Attaching the  
**Grab n' Go Handle** - Step 28-34  
(page 2)



29) Stitch in place close to BOTH side edges (and over step 26 stitching) starting at webbing end (within fabric extension) & stopping at "C" notch.

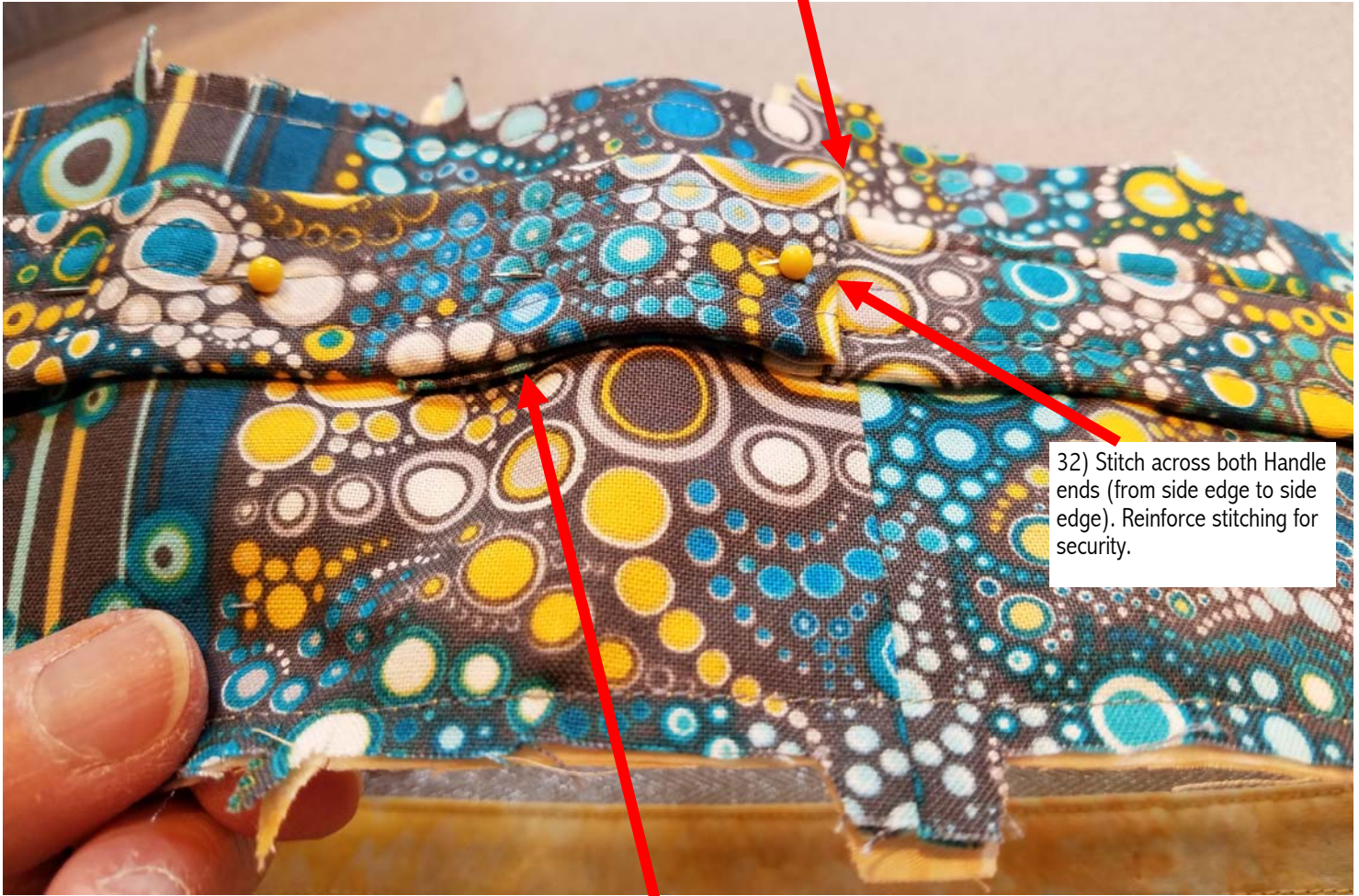


30) Fold fabric extension on free Handle end under (seamed-sides-together).



## Bangle Buddie- Attaching the Grab n' Go Handle - Step 28-34 (page 3)

30 cont.) Loop it OVER Panel unit to opposite side of Bag then place it on top of AND end-to-end w/stitched extension (from step 28).



32) Stitch across both Handle ends (from side edge to side edge). Reinforce stitching for security.

Snug the webbing ends (within fabric folds) tightly together while nudging any visible fabric extension edges UNDER Handle end to conceal them as you pin them in place. Step 31) Stitch in place along BOTH side edges (and over step 26 stitching) beginning at webbing end (within folds) & stopping once again at the "C" notch on this side of the Panel.



Leave optional O-ring uninvolved in any stitching so it is free to move across the top section of the handle

33) Now stitch across webbing on BOTH sides of Panel from side edge to side edge at "C" Notches. Reinforce stitching for security.

34) Slide BOTH D-rings down to "C" notch stitching (from step 33) on each side of Wide Panel. Stitch across webbing again (from side edge to side edge) ~3/4" ABOVE D-ring this time. Reinforce stitching