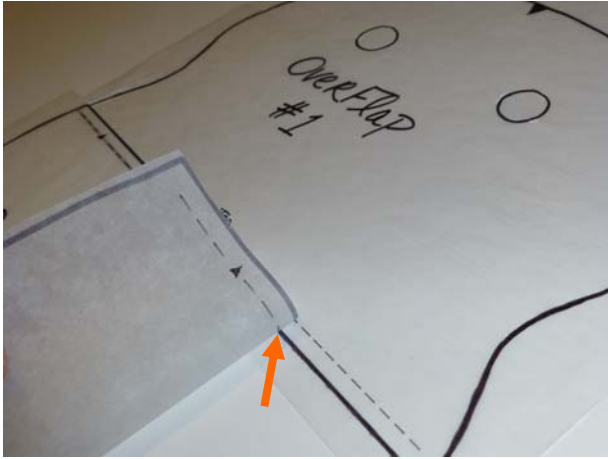


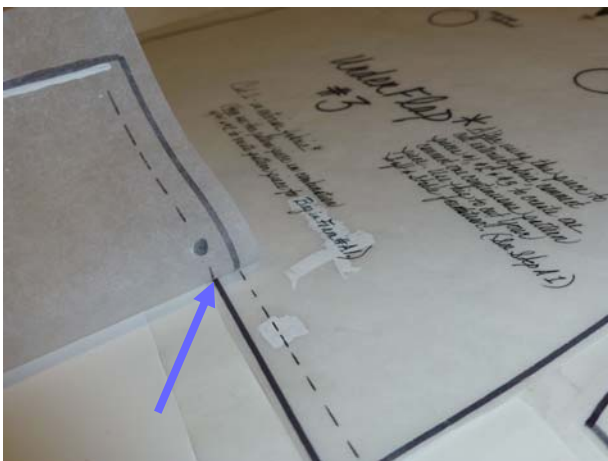
Wrapsody stepA1- Preparing the Bag in Foam (#A1)pattern piece

Pattern piece #A1 which is used to cut out the Soft & Stable foundation for your Wrapsody is one continuous LARGE pattern piece, too large in fact to include in your pattern package as a separate template. But it's easy to create this template yourself, and here's the materials you'll need: Pattern pieces- #1, #2, and #3, Pattern fix-it tape or scotch tape. (Tracing paper is helpful, although not absolutely necessary).



FIRST– Center the dashed/diamond line of the Bag Back (#2) on top of the straight bottom edge of the OverFlap (#1). see orange arrow

Tape it in place.



NEXT– center dashed/circled line of Bag Back on top of straight top edge of your UnderFlap (#3). see blue arrow

Tape this pattern piece in place.

Your combined template should look like the picture below.

Use this combined pattern template to cut out the Soft & Stable foundation for your Wrapsody.

