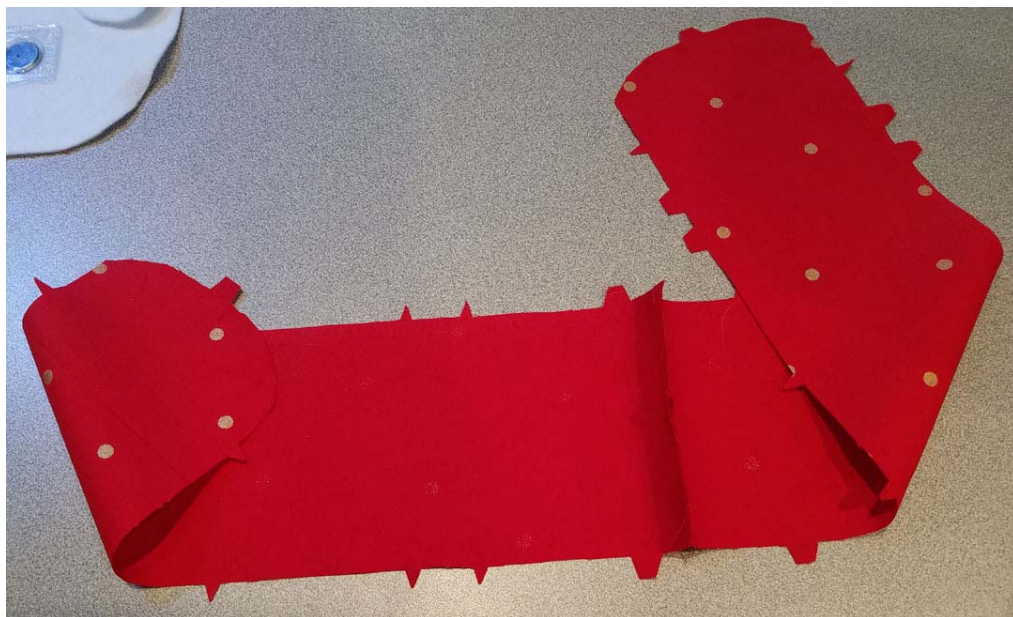
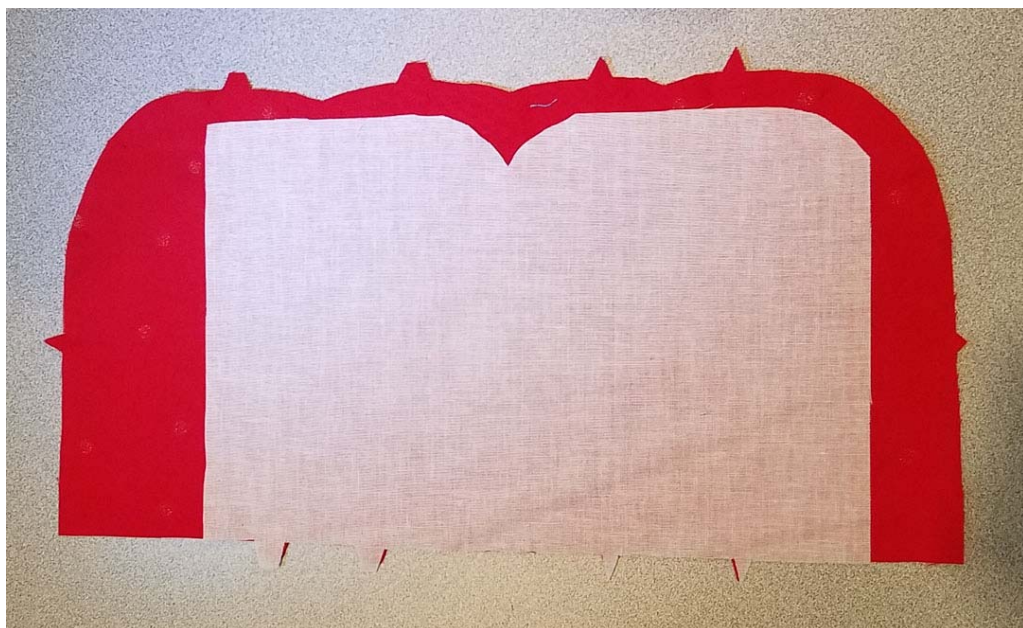


Go-Go Compact- Interfacing for the CC Slots & Wallet - Steps B1- C1-2

B1- Place CC Slots (#4a+4b) RST along short single-notched edges. Stitch 1/4" from raw edges & press seam open. This is your CC Slots unit (#4). Set aside for step C2 (below).



C1- Align notches on straight edge of Wallet Interfacing (#2a) to WS of Wallet (#2) in lining. Fuse in place & set aside for step 2a.



C2- Retrieve CC Slots (#4) from step B1.

Align CC Slot Interfacing (#4c) with 'B' notches on WS of CC Slots then fuse in place.

