



Instructions for a Segmented Pouch Variation for our Cignet Phone Pal

July 2025



Important Items to Remember As we Start

- We suggest you transfer these templates (*and their markings*) over to tracing paper. You will need to SEE the design of your fabric, under the paper), as you pin your templates in place.
- Each of these templates are LONGER than they actually need to be. This isn't a problem, & may come in handy later on.
- Concerning the template markings...
BOLD lines = your cutting lines
Thin Solid lines = the approximate cutting line for the Pouch.
Dashed lines = seam allowance
Dotted lines = the approximate center of each template. You'll use this line to center your template over the fabric design element you choose to replicate in each "wedge".
- These templates have been created specifically for the **Cignet Phone Pal** pattern, but could work as is, for other projects.

Now Let's Start

- Place template #1 carefully align the dotted centerline on your template WSD over the design element in your fabric that you wish to replicate. (*This may not be necessary if the fabric your using has a randomized design that does not repeat.*) Pin in place to secure.
- Repeat this procedure with templates #2-#8. As much as possible, the dotted design line on your template should be placed exactly as it was in template #1 above.
- Set templates #5-#8 aside for step 6, then place templates #2 & #3 RST aligning double notches. Stitch 1/4" from edges then press seam open.
- Align single notch on template #1 RST w/single notch on template #2. Stitch 1/4" from these edges then press seam open.
- Now align double notch on template #4 RST w/double notch on template #3. Stitch 1/4" from these edges then press seam open. This will be the left side of your Pouch Pocket. Set is aside for step XX.

- Place templates #6 & #7 RST aligning double notches. Stitch 1/4" from edges then press seam open.
- Align single notch on template #5 RST w/single notch on template #6. Stitch 1/4" from these edges then press seam open.
- Now align double notch on template #7 RST w/double notch on template #8. Stitch 1/4" from these edges then press seam open. This will be the right side of your Pouch Pocket.
- Now align double notch on template #7 RST w/double notch on template #8. Stitch 1/4" from these edges then press seam open. This will be the right side of your Pouch Pocket.
- Retrieve left side unit for Pouch Pocket (*from step 5*). Align this unit RST along the long, straight, raw edges of the right side unit created in step 9, aligning single notches. Stitch 1/4" from edges. Press this long seam open. The center of this seam could be a tad bulky, depending on the fabric you're using. You can "oh-so-carefully" trim a bit of this bulk if you need to in order to get this seam to lay as flat as possible.
- Retrieve the Phone Pocket pattern piece(#3) from the **Cignet Phone Pal** pattern package & place it WSD on the RS of the segmented unit you finished in step 10. This pattern piece is noticeably smaller than the segmented unit you created in step 10. That's why we've included single notches on the outside edges of your segmented unit, so that they can be used to guide pattern piece(#3) in place so that the center of your segments will be in the center of the Phone Pouch.
- Pin in place very carefully, using more pins than you'd normally use, in order to keep your segmented fabric unit from shifting while your cutting along the outside edges of template #3. Once your cutting is complete, you can return to the Cignet Phone Pal instructions and use this Phone Pouch to create your bag!

Follow Us on Social Media!

Pinterest- @studiokatdsngs

Instagram- #studiokatdesigns

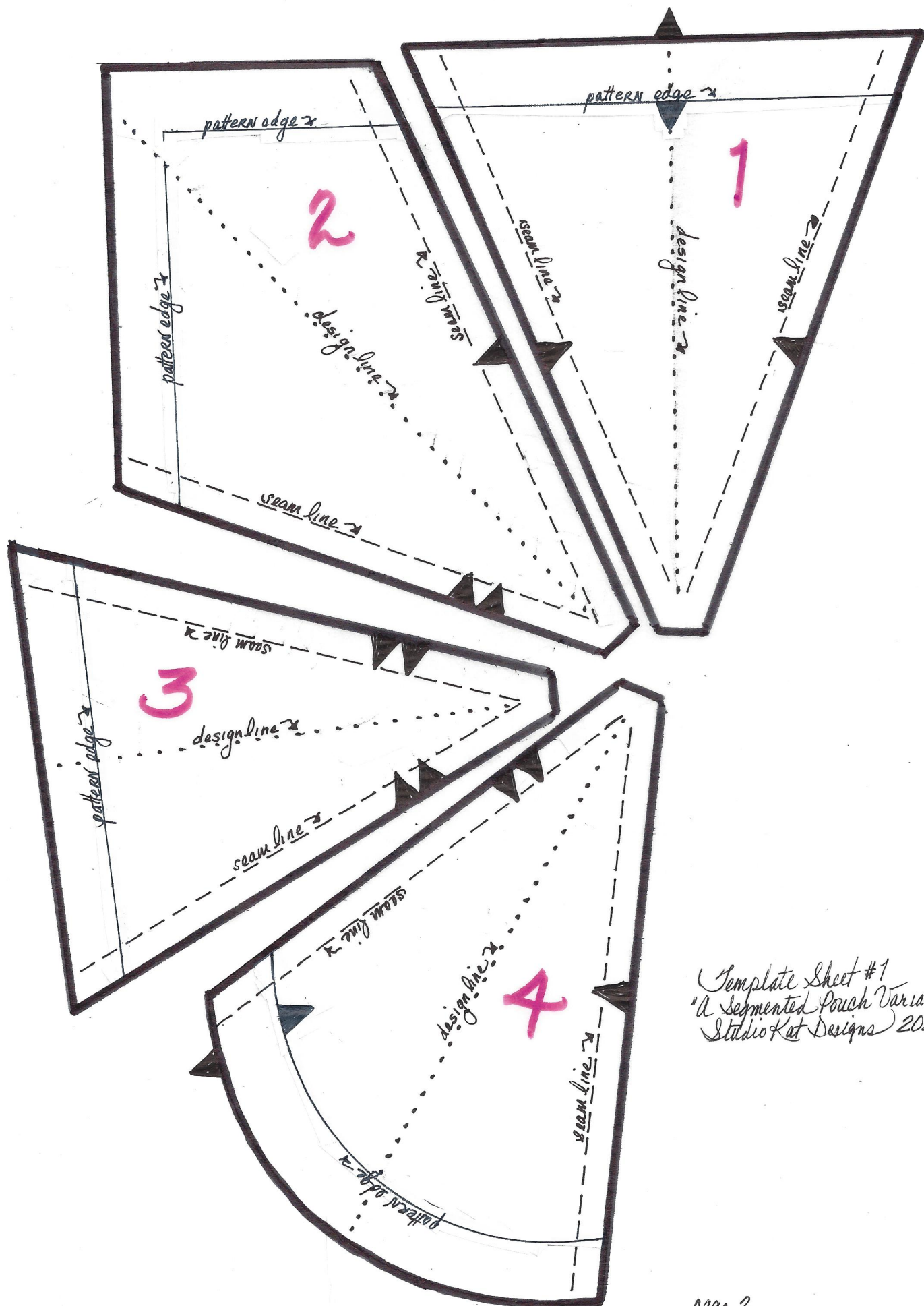
Our Blog- studiokatdesigns.com/blog

FaceBook- facebook.com/StudioKatDesignsInc

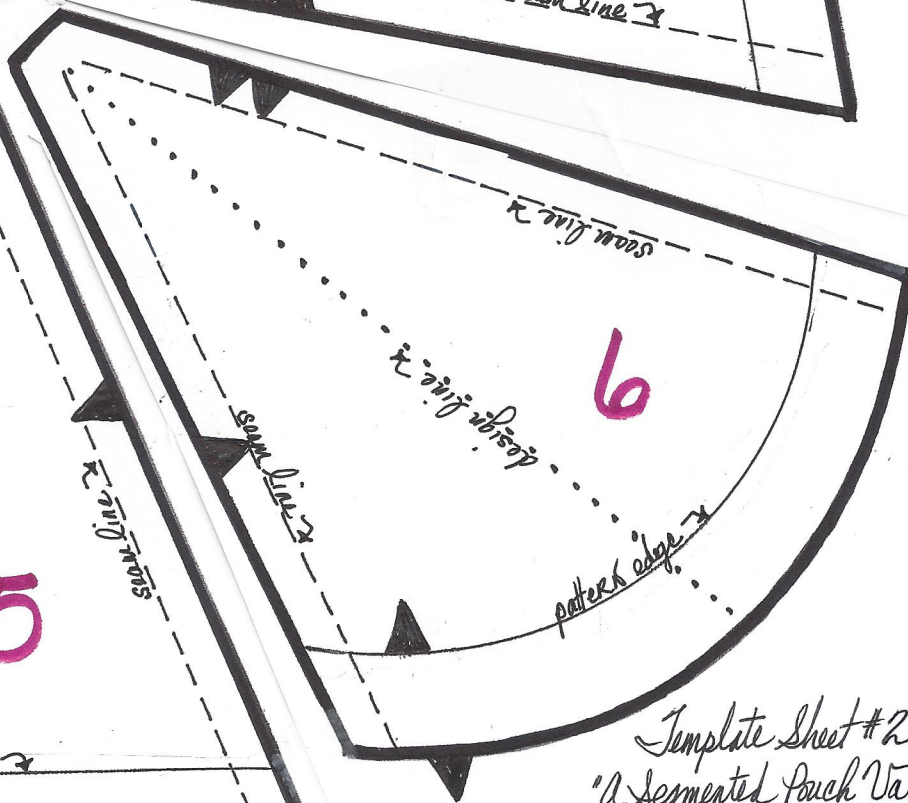
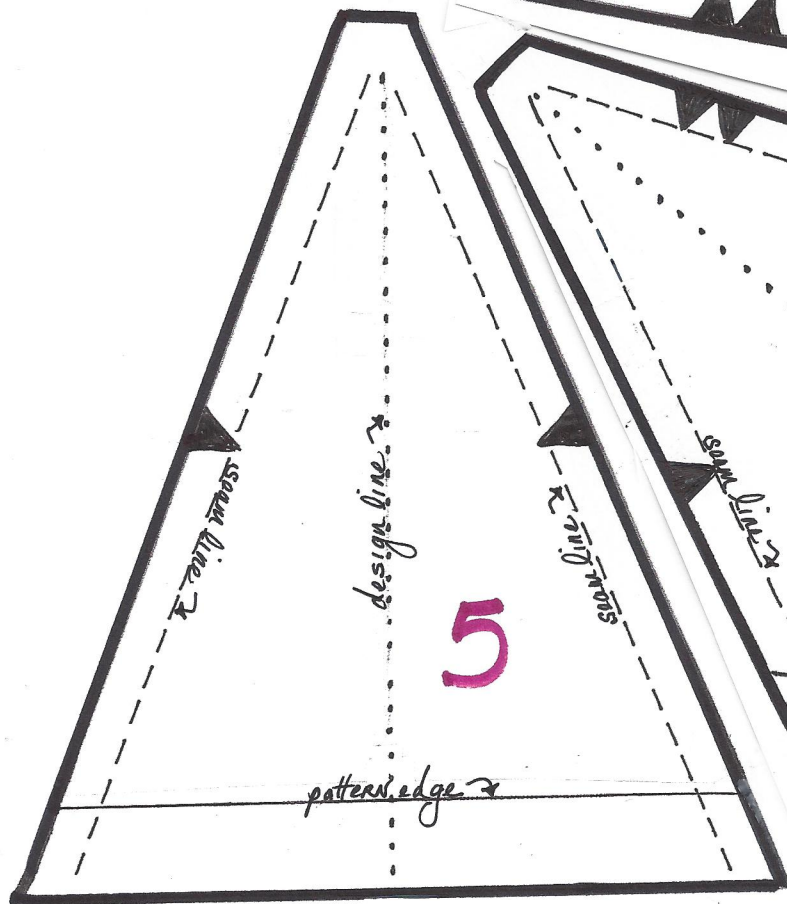
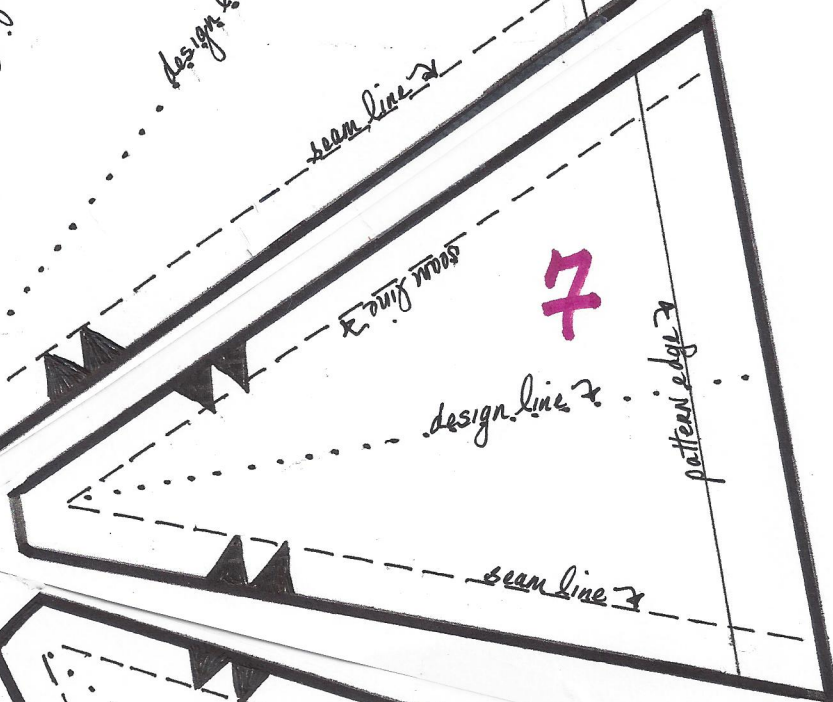
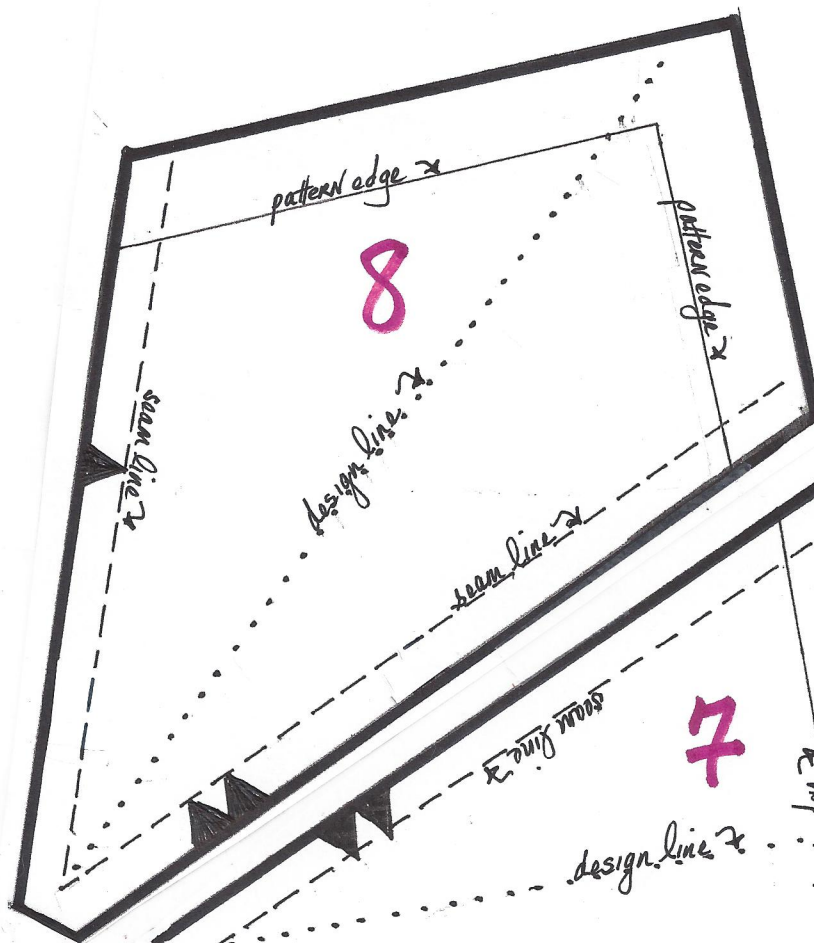
Our FaceBook Group Page- facebook.com/groups/studiokatdesigns

Our FREE Newsletter- studiokatdesigns.com/newsletter

Our YouTube Channel- youtube.com/@studiokatdesigns



Template Sheet #1
 "A Segmented Pouch Variation"
 Studio Kat Designs 2025



Template Sheet #2
"A Segmented Pouch Variation"
StudioKat Designs 2025
page 3