

the Carolinian

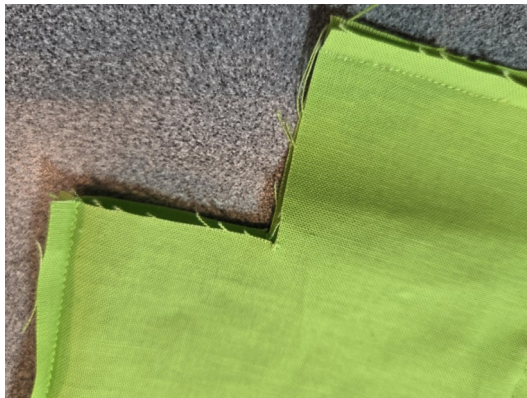
Steps 40a-43b

Creating & Attaching Bag Lining

StudioKat Designs, Inc.

Phone: 866/409-8634

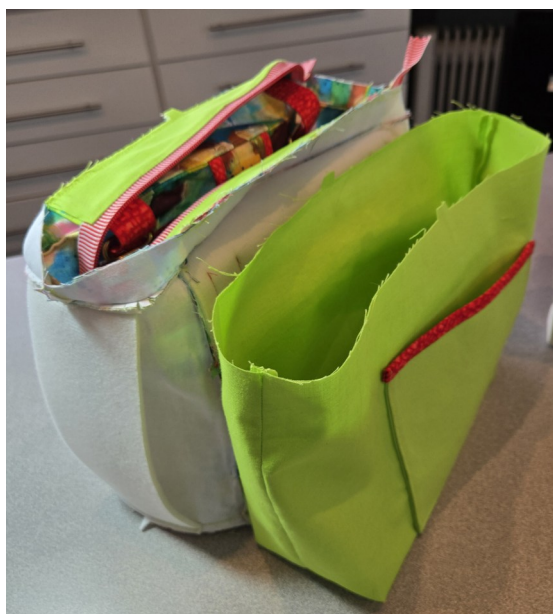
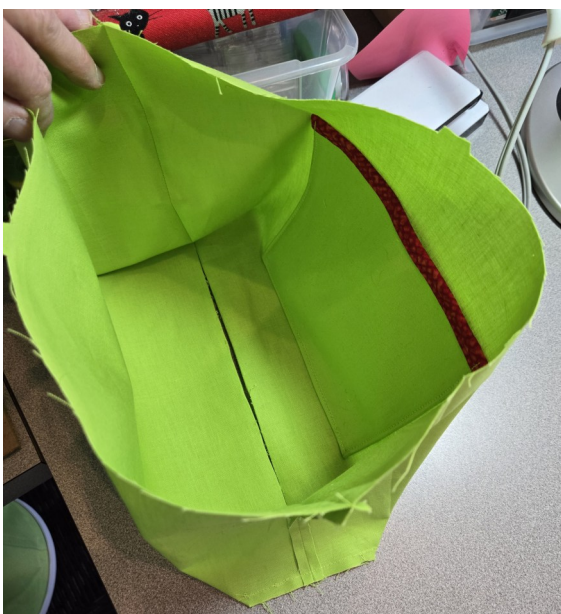
Email: info@studiokatdesigns.com



Step40a-41a— In these steps you can see that I've aligned both Bag Linings RST & stitched only the side & bottom edges together. The corners edges need to be left unstitched so that they be aligned RST in *fig. 3*, and stitched together to form the bottom box shape.



Step 41b— Here you can see that we've aligned the corner edges together & stitched them in place.



Here's how the RS of the Bag Lining should look now. Turn it RSO and retrieve your Bag now so you can sew it in place.

Cont. to
Page 2

the Carolinian

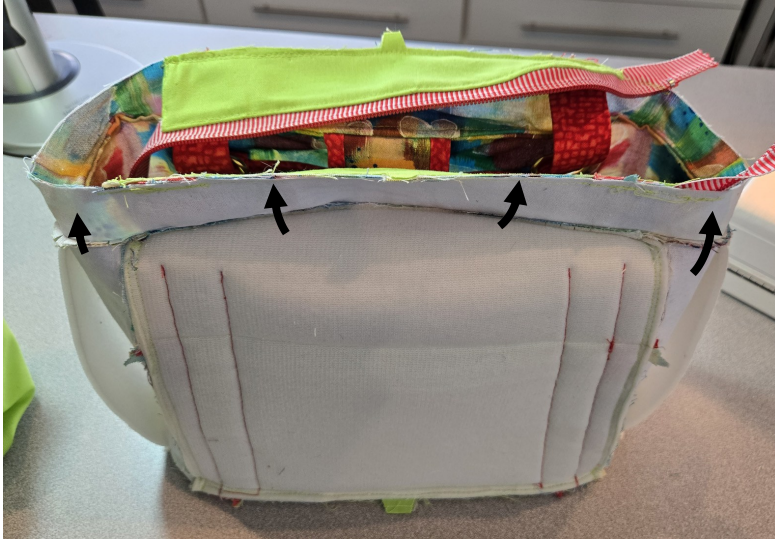
Steps 40a-43b (page 2)

Creating & Attaching Bag Lining

StudioKat Designs, Inc.

Phone: 866/409-8634

Email: info@studiokatdesigns.com



Step 42a— Flip Facings UP & AWAY from Bag (*at left above*) while also pushing Zip Panels DOWN & INTO Bag exterior. Push Bag Lining INTO (*and RST*) w/Bag exterior aligning all edges, seams & notches and sandwiching Zip Panels in between layers.

Step 42b— Stitch 1/4" from edges around entire circumference of Bag opening. This stitching area gets a little tight at the Bag sides (*at right above*), but this stitching can still be accomplished w/o using a zipperfoot.



Step 43a— Pull Bag Lining completely out of Bag (*at left*).

Now carefully pull your Bag exterior out (*at right*) thru the opening in the bottom of the Bag Lining.



the Carolinian

Steps 40a-43b (page 3)

Creating & Attaching Bag Lining

StudioKat Designs, Inc.

Phone: 866/409-8634

Email: info@studiokatdesigns.com



Step 43a (*continued*)— Press open bottom edges over 1/4" (WST,) then secure these edges together aligning bottom notches.



Step 43a (*continued*)— Now you can stitch these edges closed. Some might opt to handstitch this area closed, or, as you can see above, just machine stitch it. Your choice.



Step 43b— press Bag Lining INTO Bag now (*at left above*). Take your time doing this. Pressing really makes SUCH a difference in the final look of a Bag. Once done, **DO** press the Zip Panels into bag also. (*at right above*).