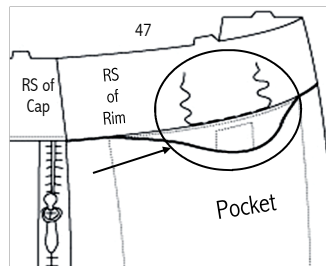
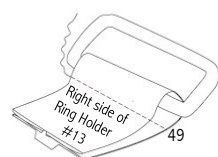


46) With Bag Back exterior-side DOWN on table, visually align your top Core Lining double notch with single notch on Rim. Smooth area flat and pin to secure. (see circled area)

47) Flip unit LSD, pull Pocket open and stitch "in the ditch" for about 2" on either side of Bag center, to secure underlying Core Lining to Bag Lining. (circled area) Reinforce stitching (to support Core Lining weight). Set Bag Back aside till step 50.



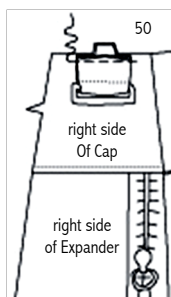
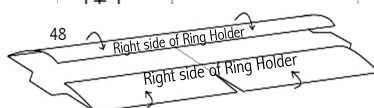
Ring Holders



48) Fold un-notched edges of Ring

Holder (#13) over WST so long edges meet. Press flat, cut in half to yield **two** 1-3/4" long ring holders.

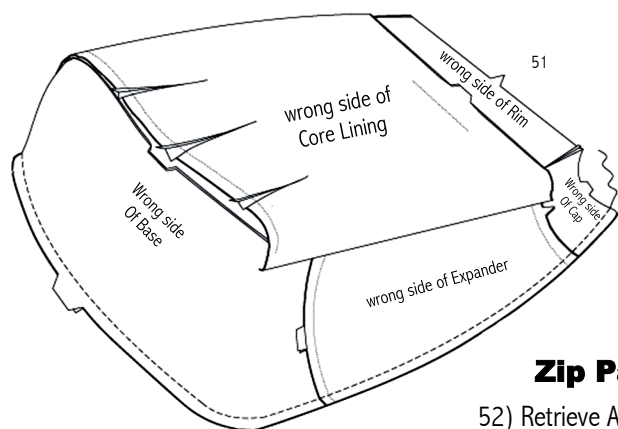
49) Feed each Ring Holder thru a 1" rectangular link so that raw edges meet. Stitch in place close to each ring with a zipper foot.



50) Retrieve Bag Back from step 47. Place a finished Ring Holder on RS of each Cap aligning double notches. Stitch in place a scant 1/4" from top edges.

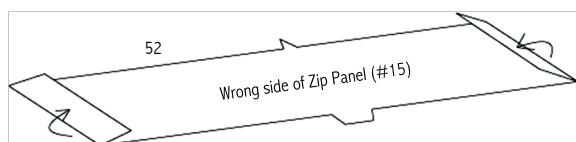
51) Retrieve Bag Front from step 27 and place it LS DOWN on table. Retrieve Bag Back unit from step 47 and place it exterior sides together with Bag Front aligning all outside notches, edges and top corners. (Bag will be inside out.) Stitch in place a full 1/4" from all three outside edges. Restitch entire seam for security. DO NOT turn bag RSO yet. Press seams for all four top corners IN toward

Rim. Set Bag aside till step 57.



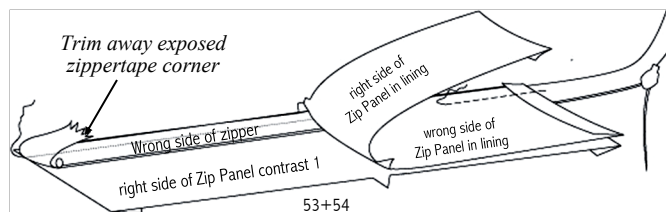
Zip Panels

52) Retrieve ALL FOUR Zip Panels (#15) (in contrast 1 & in lining). Press over short un-notched ends 1/4" (WST).



53) Referring to fig. 16, press over the top zippertape ends (WST) of a 12" separating zipper.

53cont.) Unzip zipper and place a pressed corner RST along a long double-notched edge of Zip Panel in contrast 1. Stitch a scant 1/4" from edges.

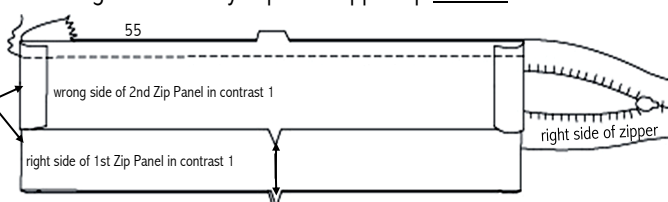


54) Place

Zip Panel in lining RST with contrast 1 sandwiching zipper in between and aligning pressed corners and double notched edges. Now stitch a full 1/4" from edges. Press both fabric pieces AWAY from zipper.

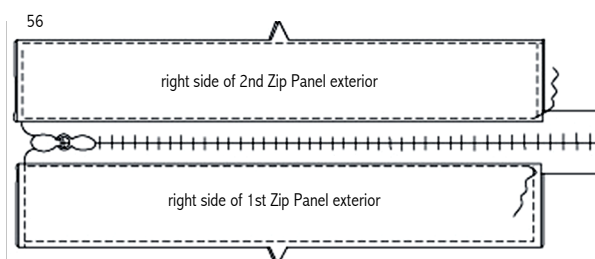
55) Re-zip. With 1st Zip Panel LSD align 2nd Zip Panel in contrast RST with free zippertape edge (while matching pressed ends & single notches with 1st Zip Panel). Secure this arrangement with pins then unzip and stitch a scant 1/4" from edges. Trim away exposed zippertop **corners**.

Please note that single notches & outside pressed edges are aligned

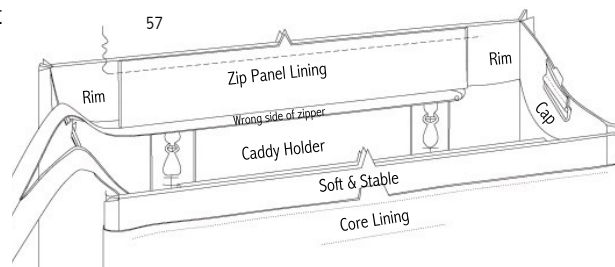


56) Place remaining Zip Panel in lining RST with 2nd Zip Panel in contrast 1. Stitch a full 1/4" from edges now and press ALL fabric pieces AWAY from zipper. Re-zip and baste close to outside edges of both Zip Panels. **DO NOT stitch over zipper teeth.**

Now top-stitch close to fabric edge along both sides of zipper.



57) Retrieve Bag from step 51. (Bag should STILL be inside-out.) Place Zip Panel along inside Rim of Bag (RST), aligning edges & single notch. Unzip & in the same way place 2nd Zip Panel on opposite Rim of Bag. Stitch a scant 1/4" from both sets of edges. Leave Bag inside out and set aside till step 62.



Lining 58) Place an Expander Lining (#12) along each short Base edge (in lining) matching double notches (RST). Stitch 1/4" from edges. Press ALL seams AWAY from Base.

