

the Easy Go Wallet

Steps 3b-3f

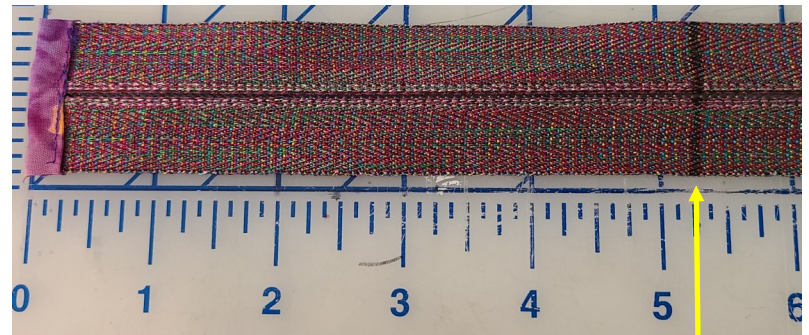
Creating a 5 1/4" zipper



3b) Place notched & unpressed edge of Zip Tab(#9) on cut edge of zipper (RST) centering notch over zipper teeth. Stitch 1/4" from raw edge thru all layers.



3c) Press Zip End over & around cut zipper edge to WS of zipper. Stitch pressed edge in place to WS of zipper. Reinforce stitching over zipper teeth.



3d) Make a line across zippertape exactly 5 1/4" away from finished bottom edge of Zip Tab. MOVE ZIPPER PULL TOWARD CENTER OF ZIPPER.



3e) With zipper pull safely in center of zipper, clip off zipper ends along line made in step 3d.



3e) Now repeat steps 3b-3e to apply a 2nd Zip Tab to these cut edges.



3e) Finally, make a small mark at the exact midpoint of your altered zipper on both sides of zipper tape then set it aside for further "action" in step 34.