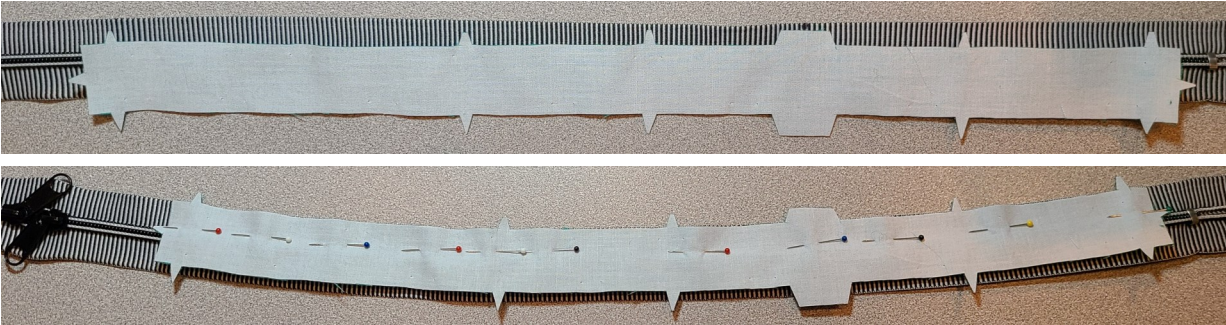
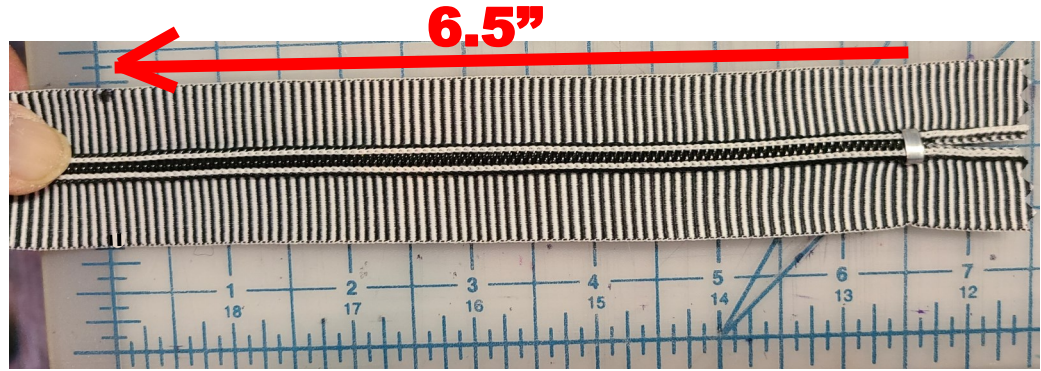


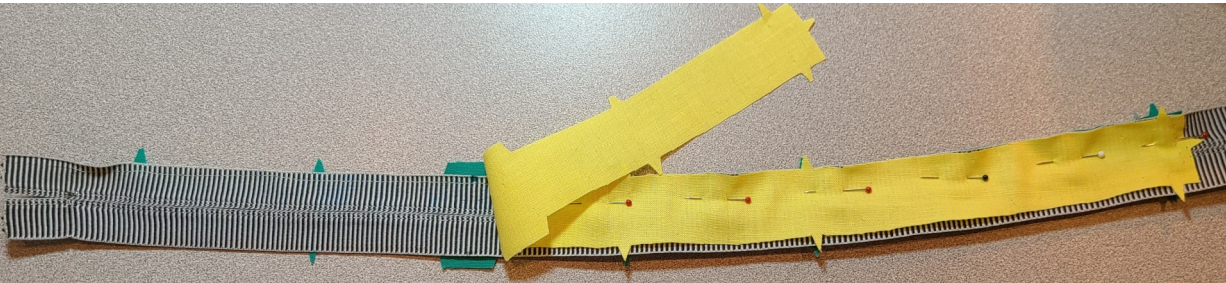
the Gemini FlightBag

Steps 33-39: Completing Thin Panel Unit

33) Place your double-headed zipper WSD & mark a spot exactly 6.5" from the RIGHT zipper stop on TOP edge of zipper ONLY.



Now place the Thin Top Panel(#8) in exterior RST along TOP edge of zipper centering quadruple notch over zipper mark. Stitch in place a scant 1/4" from edges



34) Now place Thin Top Panel in lining RSD on WS of zipper aligning ALL notches & edges. Stitch a full 1/4" from edges.



35) Press both Panels away from zipper & topstitch close to seam edge. Your completed Thin Top Panel unit should look like this. Move zip pulls to center of zipper.



36) With Thin Top Panel unit LSD on flat surface. Place Thin Bottom Panel(#9) in exterior EST along top free edge of zipper aligning end edges w/those of the Thin Panel unit. **(Please pay careful attention to these notch placements: they are VERY important!)** I purposely placed the Thin Bottom Panel BELOW the zippered unit so You could more easily see how these notches DO NOT line up with those of the Thin Panel unit.

Once Thin Bottom Panel is aligned w/free zipper end, stitch a scant 1/4" from both sets of edges.



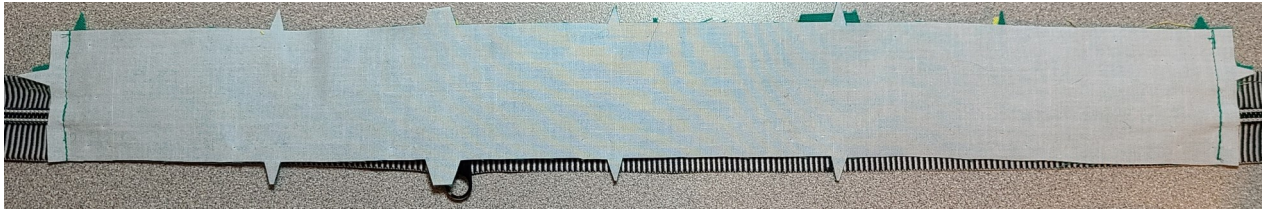
37) Flip Thin Panel unit ESD on flat surface then place Thin Bottom Panel(#9) in lining RST along top zipper edge aligning end edges & ALL notches w/those of the Thin Bottom Panel in exterior (underneath).

(Once again- I purposely placed the Thin Bottom Panel BELOW the zippered unit so You could more easily see how these notches DO NOT line up with those of the Thin Panel unit, but they DO line up w/ those of the Thin Bottom Panel in exterior (underneath the zipper.)

Stitch a full 1/4" from edges.

the Gemini FlightBag (page 2)

Step 33-39(cont.): Completing Thin Panel Unit



Here's how your Thin Panel unit should look after its stitched at both ends.

38) Trim overhanging zipper ends even w/fabric edges on both ends, then flip Thin Panel unit RSO completely. Press all seams & both Bottom Panels away from Top Panels, top stitch along seams on BOTH ends of zipper on Bottom Panel side of seam.



39) Align long outside raw edges now & stitch them in place a scant 1/4" from edges to secure them.