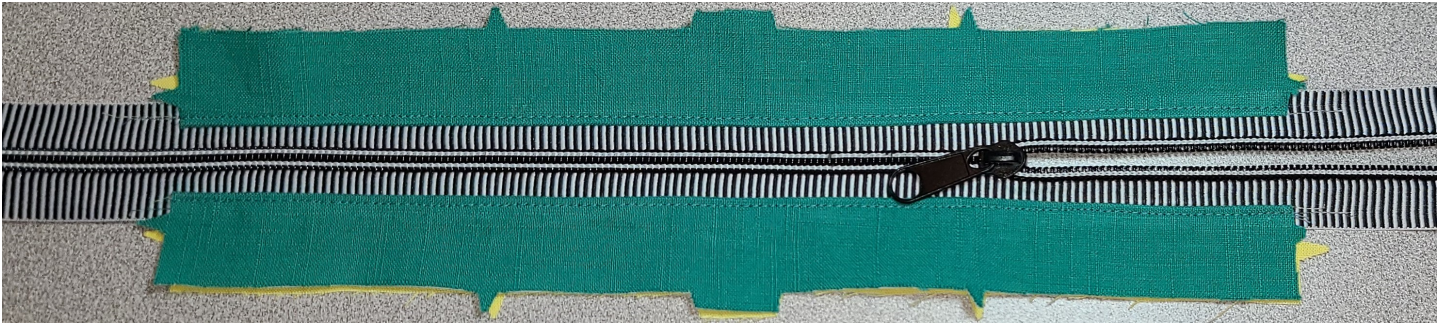


the Gemini FlightBag

Step 29-32: Completing Wide Panel Unit



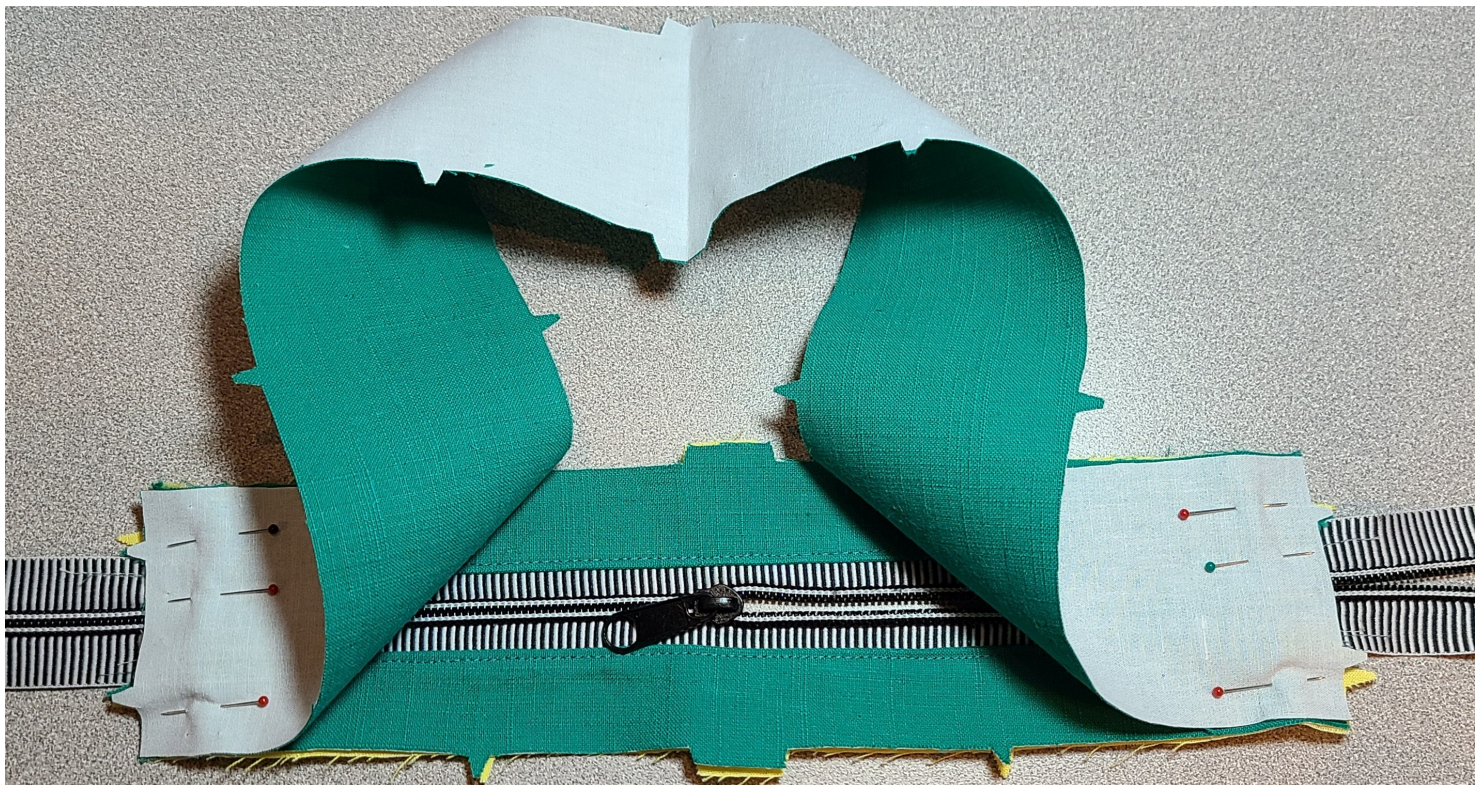
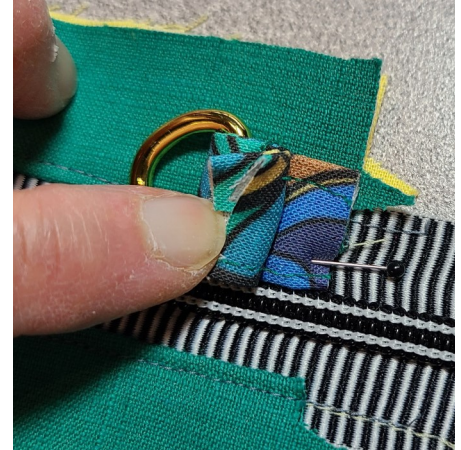
Step 29– Retrieve Wide Top Panel from step 25. **Move zipper pull away from Panel edge**



Place a Tab on BOTH ends of a Top Panel end.

PLEASE NOTE: Both Tabs must be placed on opposite ends of the **SAME Panel**. Keeping raw ends aligned with raw ends of Panel, push Tab so it snugs right alongside zipper teeth, but NOT over them.

Pin to secure then stitch a scant 1/4" from edges. PLEASE NOTE: pinning thru both layers of these Tabs can be HARD. I recommend pinning thru just ONE layer of the Tab to stabilize it in place then stitching it (a scant 1/4" from edges) to secure the placement.(as seen at right)



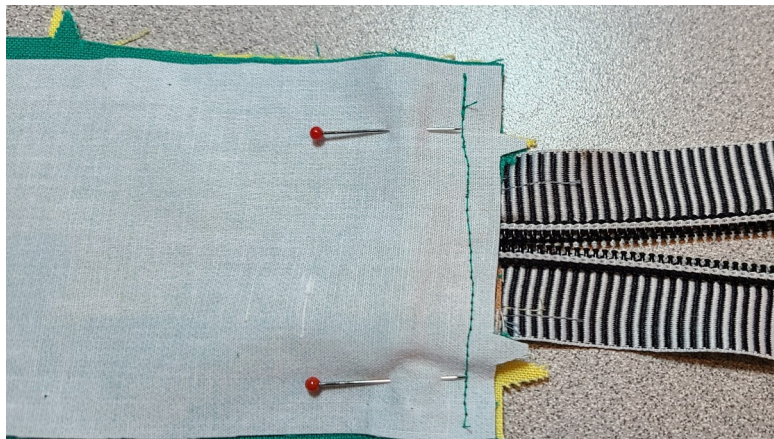
30) Sandwich your Wide Top Panel between Wide Bottom Panels(#11) in exterior & lining matching end edges, single notches & also sandwiching Tab in between layers on each side.

Please note: as shown above, I recommend FIRST pinning ONLY the Wide Panel Top in exterior in place. The reason? This is a 'lumpy, bumpy & tough seam to sew.

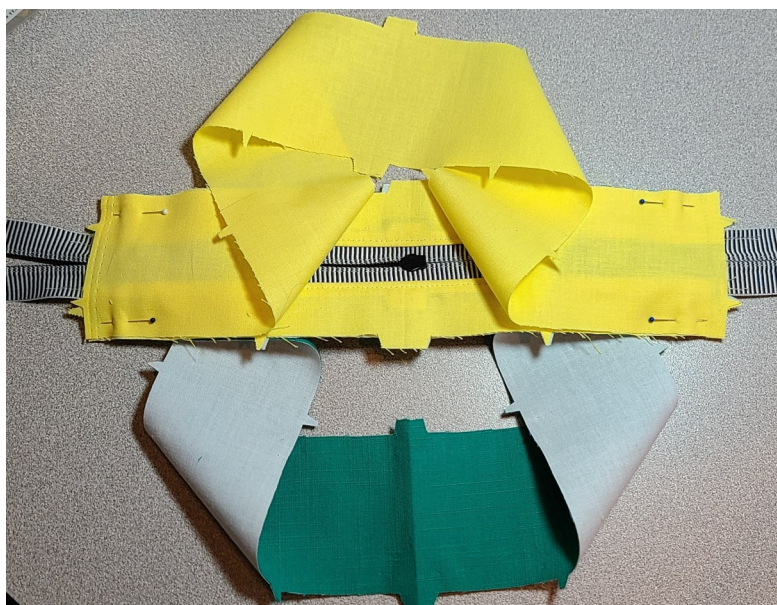
I'll show you more on the next page!

the Gemini FlightBag (page 2)

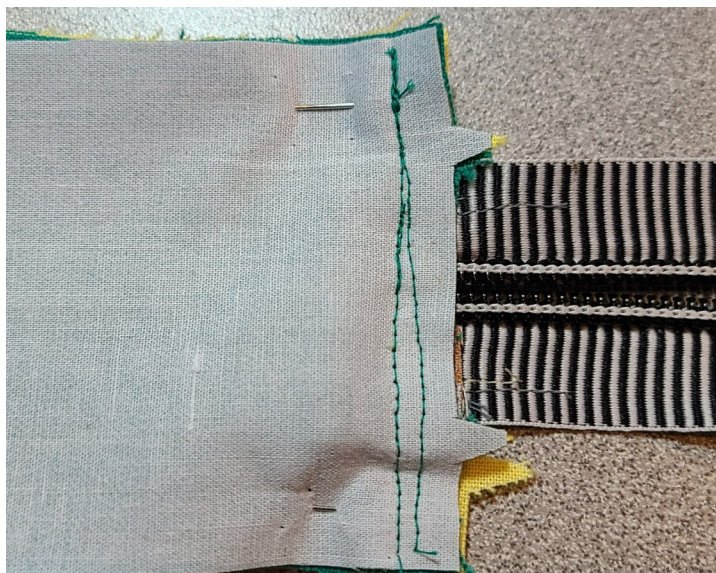
Step 29-32(cont.): Completing Wide Panel Unit



At left you'll notice that for this 1st seam I stitched, I really don't try to stitch a straight 1/4" seam. I started out at 1/4" from edges (at the top of the photo), but the stitching quickly went downhill (and swervy) as I proceeded to stitch over the Tab & zipper teeth. This is fine as long as this unorthodox seam is LESS THAN 1/4" because the final stitching will easily cover this up!



Now I flip the unit over and place the Wide Panel in lining at each end aligning the edges. BUT.....

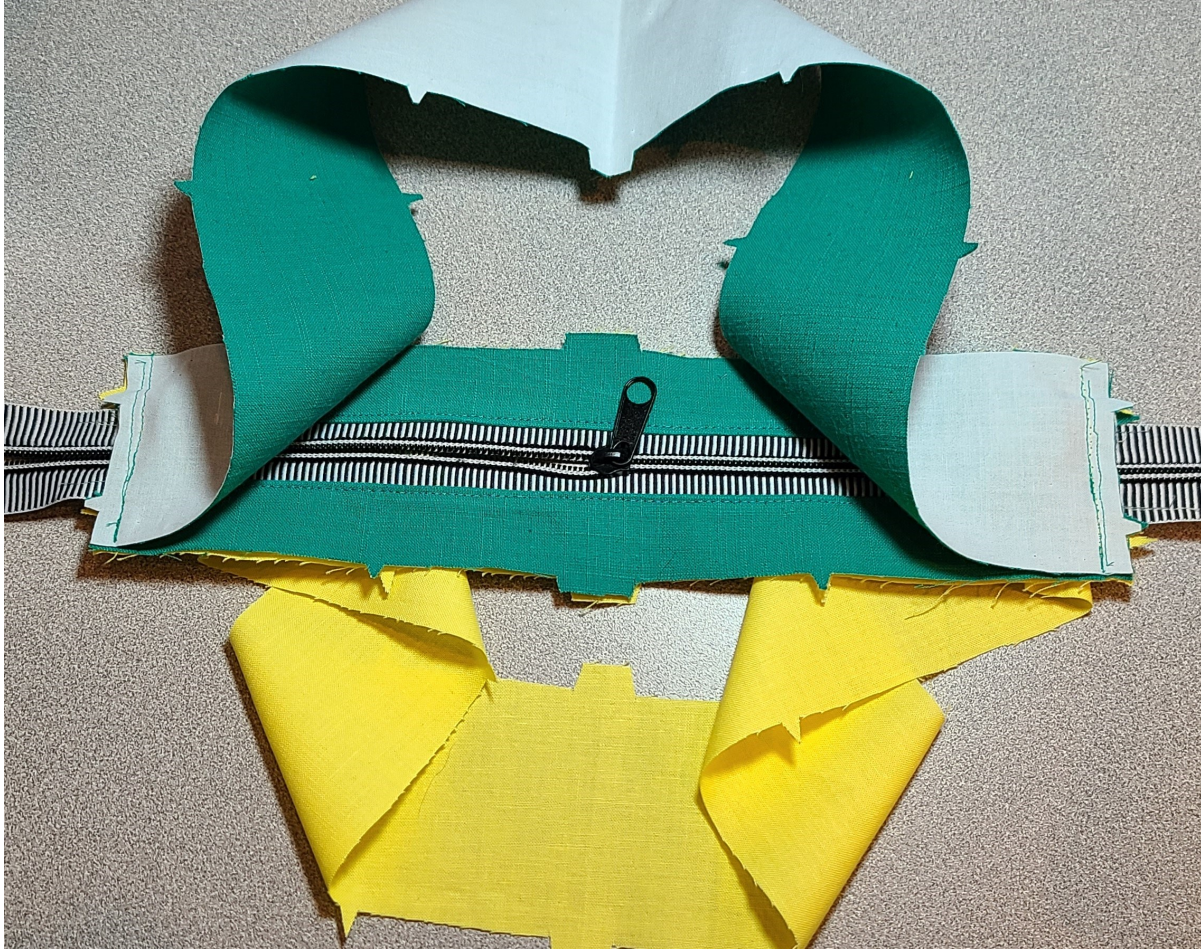


PRIOR to stitching I flip the unit over LSD so I can stitch it in place a FULL 1/4" this time VERY slowly without having to worry about the Tab or zipper shifting position under my needle since it's already secured by the initial stitching.

Stitch in place a FULL 1/4" from edges on both sides of Wide Panel Top. Reinforce stitching over entire seam as this is a weight-bearing seam.

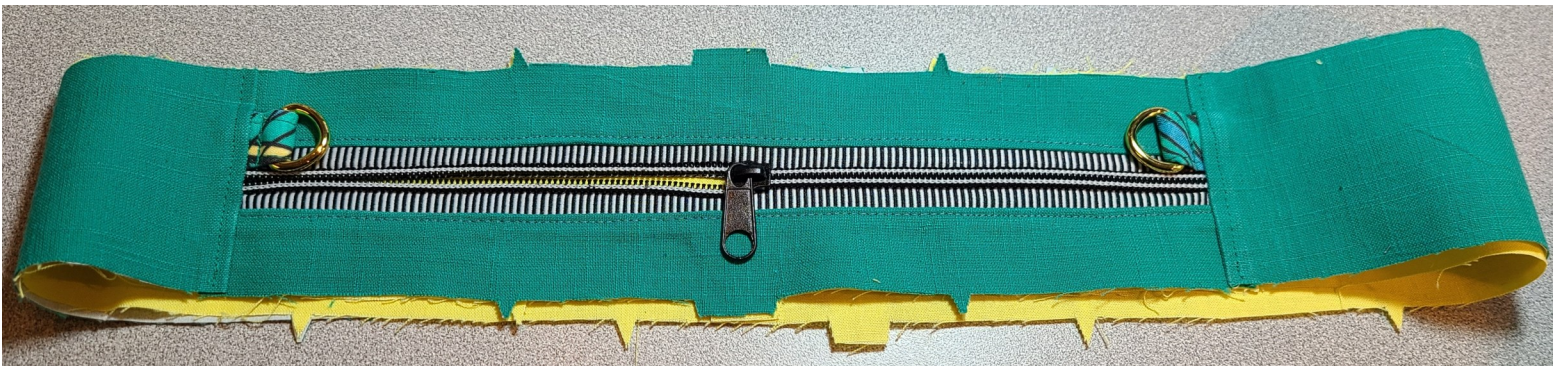
the Gemini FlightBag (page 3)

Step 29-32(cont.): Completing Wide Panel Unit



31) In the picture above you can see where I've stitched the Wide Bottom Panel in place on BOTH ends over the initial zig-zaggedy stitching.

Now we can trim the zipperends off (provided you have moved the zipper pull to the center of your unit) press all seams & Bottom Panels away from Wide Panel Top, Now you can topstitch close to both finished seam edges on Bottom Panel side of seam.



32) Finally, align long outside lining & exterior raw edges & stitch them in place a scant 1/4" from these edges to secure them. Set your completed Wide Panel Unit aside for step 44.