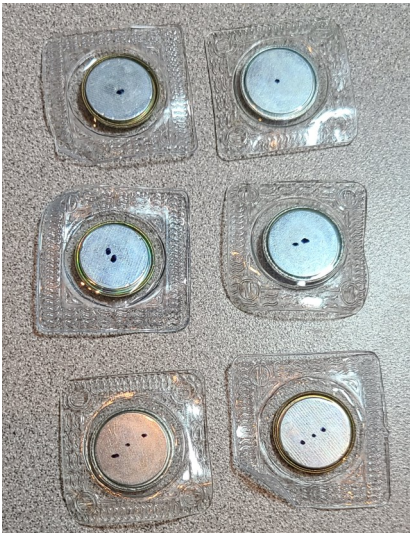


the ErgoMatic

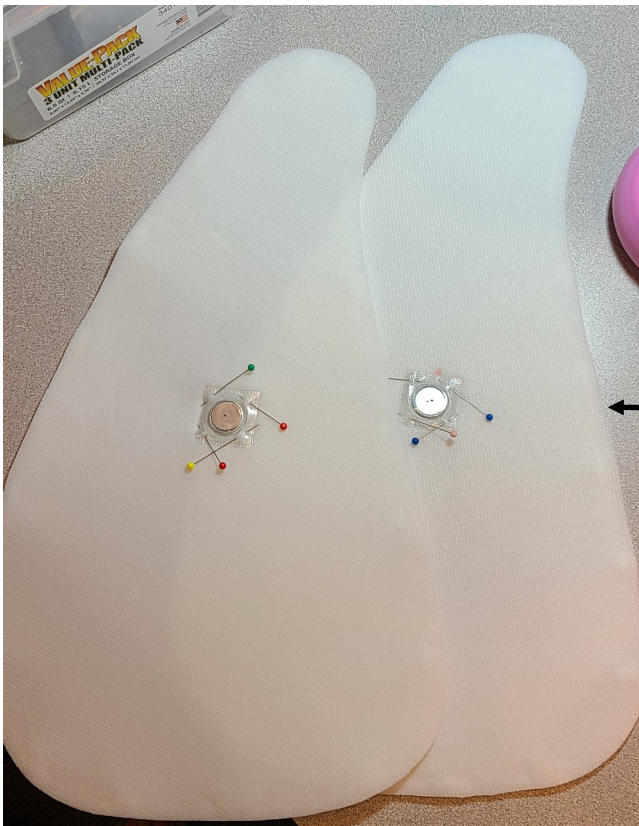
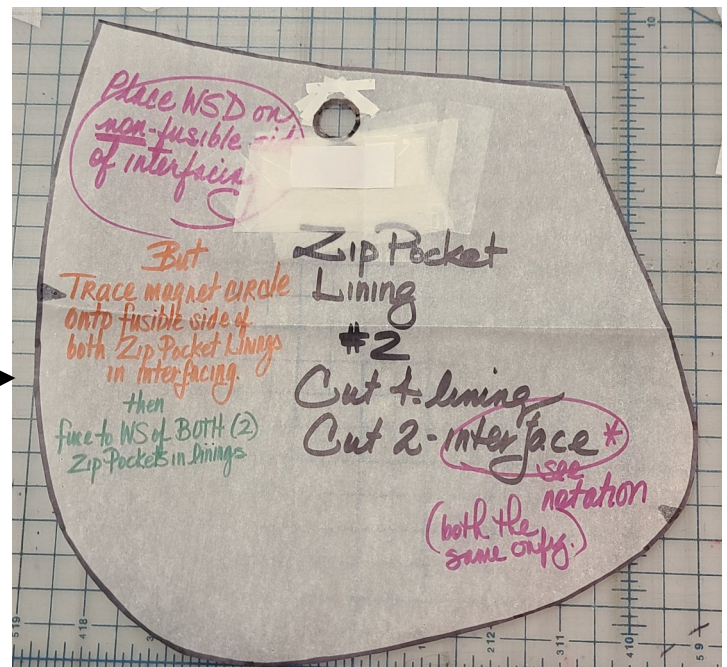
Steps A4 Marking Your Magnet Pairs



Separate all 3 sets of magnets. Using a marker, place ONE small dot on BOTH sides of each magnet piece in set #1, TWO dots on set #2 magnets, & THREE dots on the set #3 magnets. Reconnect all magnet pairs & set aside for briefly.

Cut out the area WITHIN the mag snap circle on each template. (#1, #2, #3, and #4)

At right you can see our #2 template with the mag snap circle cut out.



Now all you need do is trace around the inside of each cutout circle to transfer the snap location to your project, then pin ONE magnet piece (magnetic side UP) in place covering your marked circle, then stitch in place.

(I always stitch close to the straight plastic edges of the snap TWICE for reassurance!)