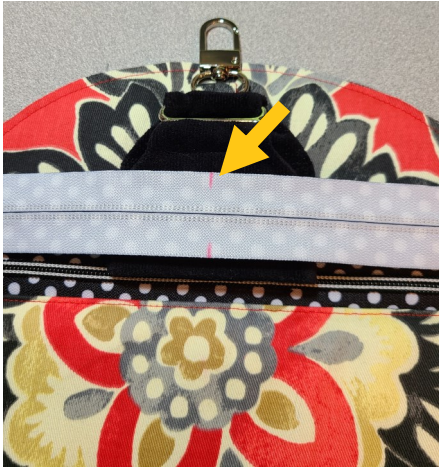


the OutBreaker

Steps 26-29— Attaching the Purse Zipper

These steps were difficult to illustrate in two-dimensional drawings within the instructions, so I have included quite a few pictures here. I think they'll help a lot.



Step 26— Mark the centerpoint of the altered 22" zipper (on upper & lower tapes). Place it RST on Rim of Bag Back in exterior matching the zip mark w/ top single notch and aligning all edges.



Step 26 cont.— Pin in place around entire Bag Back edges. (The Zip Tabs should be longer than the bag edges) *(at left)*

(Please notice how many pins I use, this helps a LOT.)

Stitch a scant 1/4" from edges *(at right)*



Step 27— Place zippered Bag Back in lining RSD on WS of zipper (and RS of Bag Back in exterior, sandwiching zip in between layers. *(at left)*

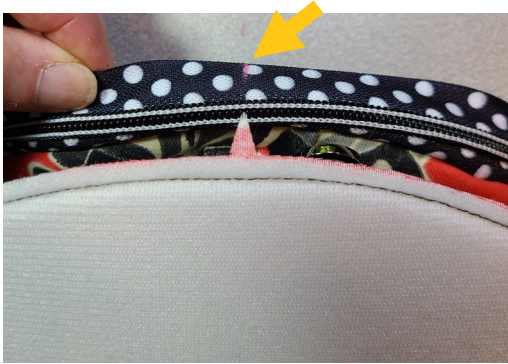
Stitch a FULL 1/4" from edges this time *(above)*

Restitch for security then flip Bag Back in lining over the zipper edges. It should like the picture at right.



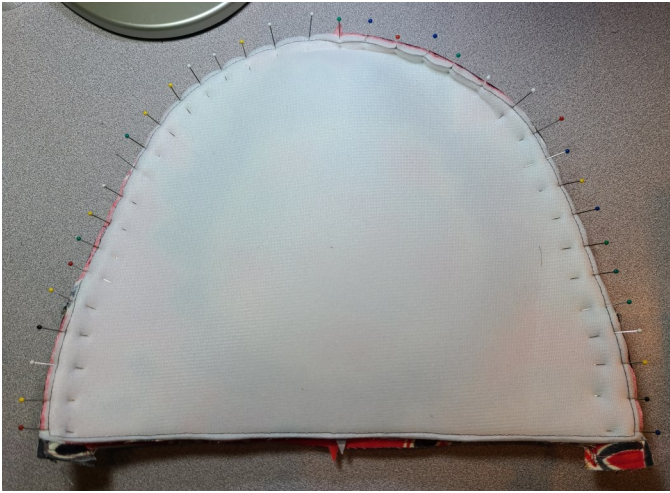
the OutBreaker

Steps 26-29— Attaching the Purse Zipper
(page 2)



Step 28— Place Bag Front (in ext) RST w/Bag Back in ext aligning top single notch w/ the zipper mark you made in step 26 (at left)

It should look like the pic at right as you proceed.



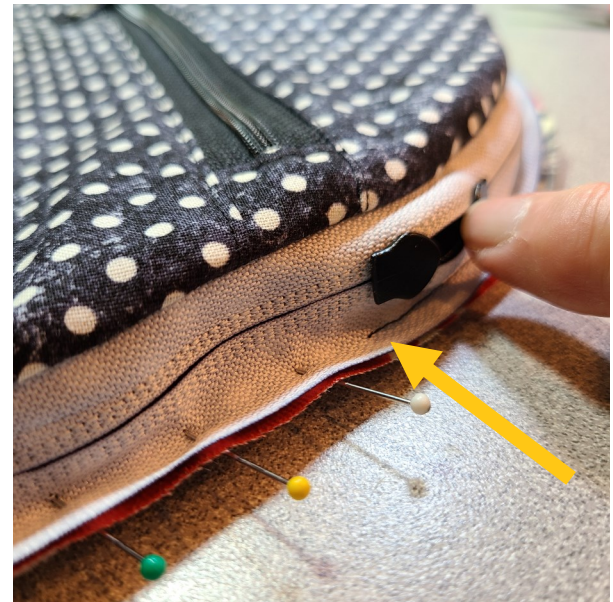
Step 28 cont.-

Your project should look like the picture at left when fully pinned in place... BUT... it's WAY easier if you flip it "foam-side" DOWN on your machine bed for stitching!

(as shown below at left)



I also recommend that you stop stitching occasionally to move the zipper pulls out of your stitching path occasionally, rather than trying to stitch around them. (at right)



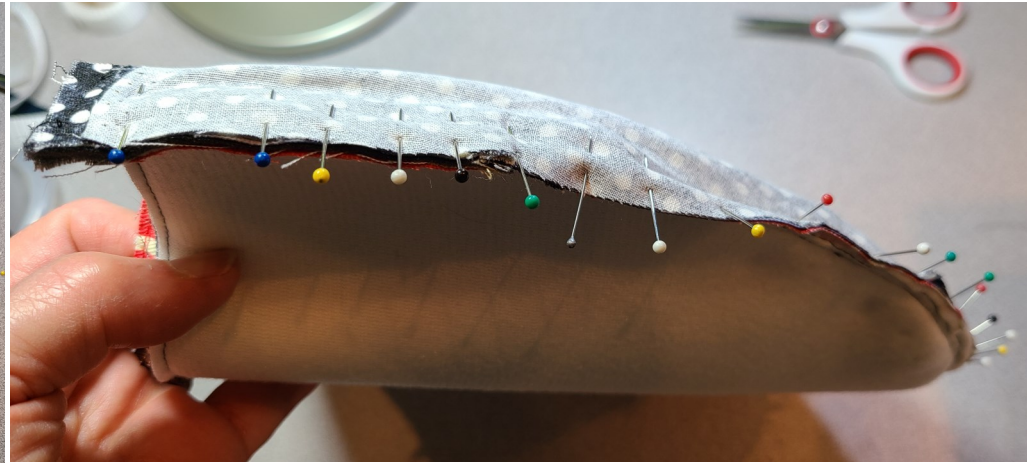
the OutBreaker

Steps 26-29— Attaching the Purse Zipper
(page 3)



Step 29— Now place Bag Front in lining RSD on WS of zipper sandwiching Bag Back in lining in between layers.

(Once again, check out how many pins I used.)



This is how it looks once the Bag Front in lining is pinned completely in place.



Once again, the easiest way to stitch this lining in place is to do it with the Bag Front in exterior "foam-side" DOWN on machine bed (as shown at far left). Restitch for security then flip the Bag Front lining over the zipper so your Bag Top is totally LSO now (above).