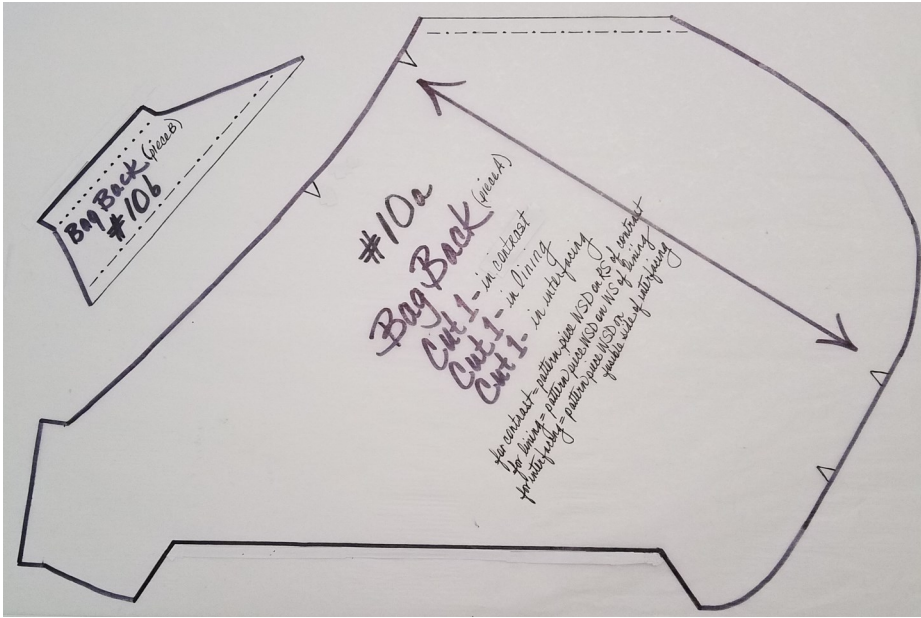




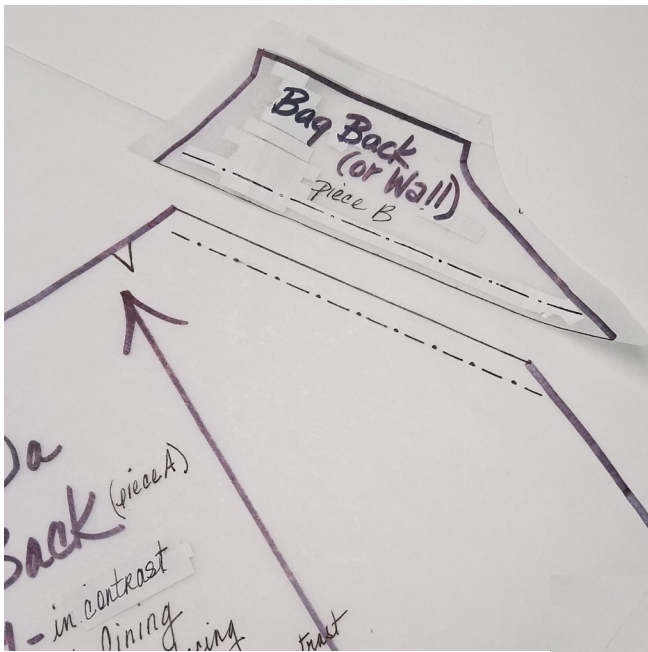
# The Side Slinger

Step D— Reconnecting the pattern pieces (a + b) for #10(Bag Back and #12(Bag Wall)



OK— SO there were two pattern pieces that just wouldn't fit on our 11" X 14" template sheet, so we had to create a "disconnect".

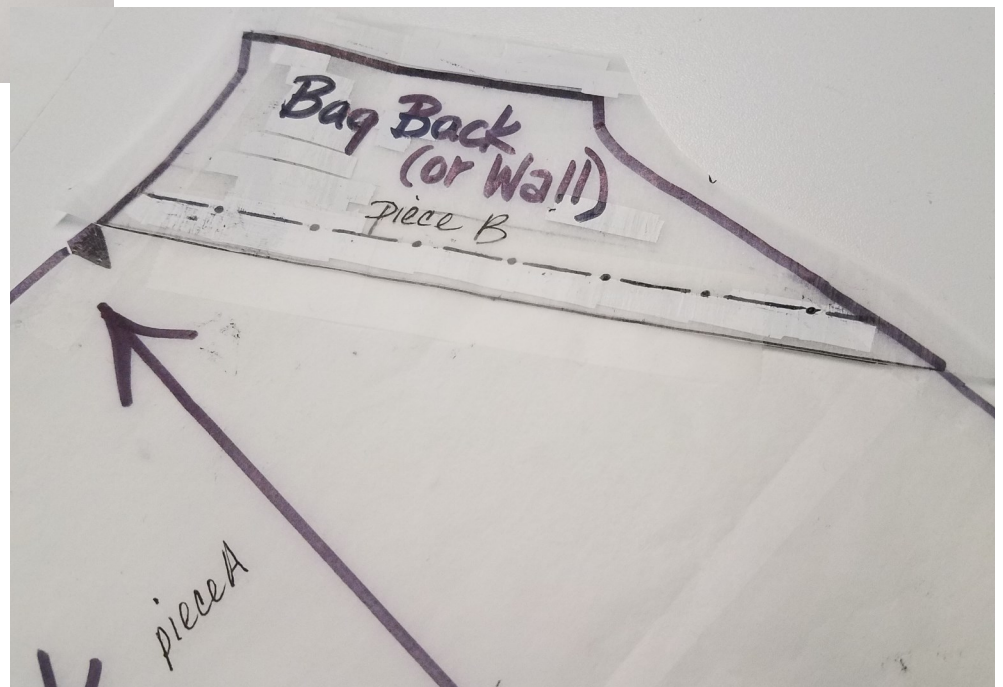
To re-connect them correctly, do the following.



First— I like making a copy of the tiny "Part B" portion of this template on tracing paper which makes the reconnection a piece of cake.

Once it's traced out, place the part B item on top of Part A aligning the dashed & dotted lines . When this is done correctly, the outside bold lines of the pattern piece will also match perfectly.

(see below)



Once your happy with the arrangement, tape the pieces permanently in place.

*Please note: This attachment procedure is identical for both #10 (Bag Back) and #12 (Bag Wall).*